

SURVEY FOR: LONE ROCK TIMBERLAND CO.
 P.O. BOX 1127 ROSEBURG, OR 97470
 SURVEY BY: LONE ROCK TIMBER MANAGEMENT COMPANY
 P.O. BOX 1127 ROSEBURG, OR 97470
 THE EAST LINE OF SECTION 36 T. 28 S. R. 4 W. W.M. DOUGLAS CO. OR
 DATE: MAY 2016

FILED
 Date: 9-13-2016 By: SC
 This survey was consists of:
MAP: CS 65/94-2
 Narration: _____
 Corner Rpt: _____
 DOUGLAS COUNTY
 SURVEYOR

NARRATIVE:

THIS PURPOSE OF THIS SURVEY IS TO MARK PROPERTY LINES BETWEEN EXISTING MONUMENTS FOR TIMBER MANAGEMENT PURPOSES. IN 1961 DOUGLAS COUNTY SURVEYORS FOUND ORIGINAL EVIDENCE TO ESTABLISH BRASS CAPS AT THE NORTHEAST CORNER AND EAST QUARTER CORNER OF SECTION 36. THE COUNTY ALSO ESTABLISHED A BRASS CAP FOR THE CLOSING CORNER FOR SECTIONS 30 AND 31 IN THE ADJACENT RANGE 3 WEST. IN 1964 BLM ESTABLISHED A BRASS CAP FROM ORIGINAL EVIDENCE THE SOUTHEAST CORNER OF SECTION 36. LONE ROCK INITIATED A SURVEY AT THE SOUTHEAST CORNER OF SECTION 36 TO RUN NORTHERLY A CLOSED LOOP RANDOM SURVEY ALONG THE EAST LINE OF SECTION 36. WE FOUND AND TIED INTO OUR SURVEY EACH CORNER AS NOTED ON THIS MAP AND COMPUTED TRUE LINE BETWEEN THE NORTHEAST, EAST QUARTER AND SOUTHEAST CORNERS. LONE ROCK THEN RIBBONED, BLAZED, PAINTED AND TAGGED TRUE LINE AS SHOWN. THIS SURVEY WAS DONE WITH A GEOMAX ZIPP 20R TOTAL STATION WITH GARY ANGIOLET, IGNACIO ROMAN, JOSH FOWLER AND DAN SAILY ASSISTING ME.

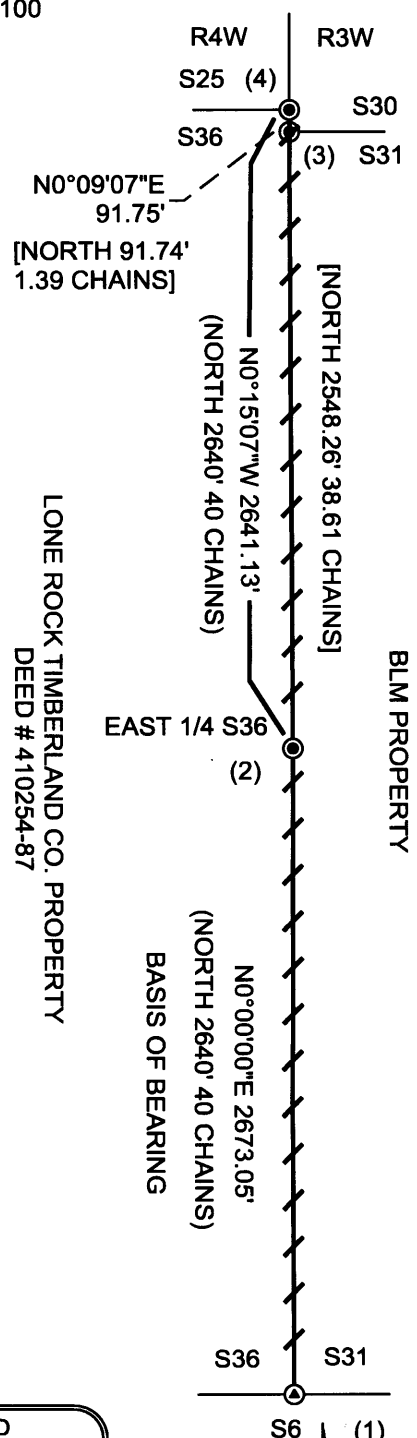
CORNER INFORMATION:

- 1) THE TOWNSHIP CORNER FOR SOUTHEAST CORNER SECTION 36 GCDB 700100
 FOUND 1964 BLM CAP 0.7 FEET ABOVE GROUND
 -- 55" DOUGLAS FIR BEARS N48 1/2°E 56.8 FEET (RECORD N48°E 56.1 FEET) HEALED FACE AND TAG.
 -- 16' CEDAR BEARS N70 1/4°E 45.0 FEET (RECORD N69 1/2°E 45.0 FEET) HEALED FACE AND TAG.
 -- 24" DOUGLAS FIR BEARS N16°W 52.5 FEET (RECORD N17 1/2°W 52.7 FEET) HEALED FACE AND TAG
 -- DOWN CEDAR AT RECORD BEARING AND DISTANCE OF N70°W 15.8 FEET, TREE IS DOWN AND UPROOTED DID NOT MEASURE TO.
 CORNER LIES ON FLAT BENCH WITH REMAINS OF OLD AERIAL TARGET. PUT METAL U-POST APPROX. 1.0 FEET NORTH OF CORNER.

- 2) THE EAST QUARTER CORNER FOR SECTION 36 ONLY GCDB 700140
 FOUND 1961 COUNTY CAP 1.5 FEET ABOVE GROUND
 -- 24" ORIGINAL DOUGLAS FIR BEARS N72 1/2°E 7.3 FEET (RECORD N65°E 6.6 FEET) HEALED FACE AND TAG
 -- ROTTEN STUB ORIGINAL 12' BT BEARS N75 1/4°W 13.0 FEET (RECORD N76°W 13.0 FEET) REMNANT OF FACE
 -- ROTTEN STUB BEARS S56°W 14.3 FEET (RECORD S57°W 14.0 FEET) REMNANTS OF FACE AND TAG
 -- NEW 13" DOUGLAS FIR BEARS N59 1/2°W 20.9 FEET WE SCRIBE T28S R4W 1/4 S36 BT AND TAG TREE
 CORNER LIES ON NORTH SLOPE. OLD SKID ROAD LIES 20 FEET SOUTH OF CORNER. PUT U-POST APPROX. 1.0 FEET NORTH OF CORNER

- 3) THE CLOSING CORNER FOR SECTIONS 30 & 31 ~~T28S R3W~~ GCDB 700177
 FOUND 1961 COUNTY CAP 1.5 FEET ABOVE GROUND
 -- 39" ORIGINAL FIR BEARS N49°E 34.3 FEET AS PER RECORD TO FACE OF TREE. HEALED FACE AND TAG.
 -- ROOT MASS OF ORIGINAL 24" FIR AT RECORD BEARING AND DISTANCE OF S80°E 11.2 FEET.
 -- DOWN AND UPROOTED 12" FIR AT RECORD BEARING AND DISTANCE OF S8°E 7.3 FEET.
 CORNER LIES ON SOUTH FACING SLOPE, SEE DRAWING FOR BEARING AND DISTANCE TO NORTHEAST CORNER OF SECTION 36

- 4) THE SECTION CORNER FOR SECTIONS 25 AND 36 T28S R4W GCDB 700200
 FOUND 1961 COUNTY CAP 1.5 FEET ABOVE GROUND
 -- 14" CEDAR BEARS N23 3/4°W 24.8 FEET (RECORD N23°W 25.0 FEET) HEALED FACE AND TAG.
 -- LOW D.F. STUMP BEARS BEARS S71°W 20.9 FEET (RECORD S71°W 21.0 FEET) NO VISIBLE MARKS, TAG ON TOP OF STUMP
 -- NEW 14" CEDAR BEARS S80°W 18.0 FEET WE SCRIBE T28S R4W S36 BT AND TAG TREE.
 CORNER LIES ON SOUTH FACING SLOPE. SEE DRAWING FOR BEARING AND DISTANCE TO CLOSING CORNER FOR SECTION 30 & 31 T28S R3W.



LONE ROCK TIMBERLAND CO. PROPERTY
 DEED # 410254-87

BLM PROPERTY

LEGEND	
⊙	FOUND 1964 BLM CAP
⊙	FOUND 1961 COUNTY CAP
////	LINES BLAZED, FLAGGED, PAINTED, AND TAGGED
()	USGLO 1881 PLAT #545 T28S R4W
[]	USGLO 1911NPLAT #394 T28S R3W

REGISTERED
 PROFESSIONAL
 LAND SURVEYOR

 OREGON
 JULY 16, 1987
 KEN W. HOFFINE
 PLS 2291
 EXPIRES: 6/30/2017

