

OREGON CORNER RESTORATION FORM

SECTION 2 TOWNSHIP 26 S. RANGE 2 W
COUNTY DOUGLAS DATE 12/5/2016 TRACT F260202
POINT IDENTIFIER 520 640

CORNER DESIGNATION:

T 26 S R 2 W
CW 1/16 S 2



X _____

CONDITION REPORT ONLY
NOT FOUND
RENEWED
UNRECORDED
SURVEYED IN
REFERENCED OUT

FLED

Date: 12/27/2016 By: JC

This survey consists of:

Map: _____

Narrative: _____

Corner Rpt: CS 65/93-63

PREVIOUS RENEWALS/SURVEYS, ETC:

LECHLIDER MAP M11-31, MONREAN MAP M144-47, LANG MAP M162-46.

DOUGLAS COUNTY
SURVEYOR

ACCESSORIES FOUND: (CONDITION AND SOURCE)

28° ROTTEN FIR STUMP BEARS N5°W 22.7 FT. (RECORD N7°W 23.0 FT.) DESTROYED DURING LANDING CONSTRUCTION.

19° ROTTEN FIR STUMP BEARS N61 1/2°E 18.9 FT. (RECORD N61°E 19.2 FT.) DESTROYED DURING CONSTRUCTION.

11° DOUGLAS-FIR BEARS S74°E 27.85 FT. (RECORD S74°E 27.9 FT.) DESTROYED DURING LANDING CONSTRUCTION.

12° DOUGLAS-FIR BEARS S6°W 7.0 FT. (RECORD S5°W 6.8 FT.) DESTROYED DURING LANDING CONSTRUCTION.

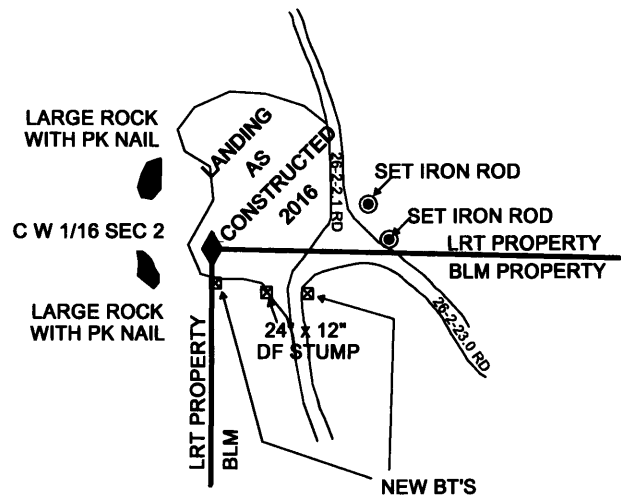
MONUMENT DETAIL:



SKETCH:
(NOT TO SCALE)

LEGEND:

- ◆ CW 1/16 SEC 2. SET 5/8" X 40" IRON RODS WITH YELLOW CAP LONE ROCK TIMBER PLS 2291
- SET 5/8" X 40" IRON RODS WITH ORANGE CAP LONE ROCK TIMBER PLS 2291
- ▣ BEARING TREES



MONUMENT:

CW 1/16 SEC 2 MONUMENT RAILROAD SPIKE PER LECKLIDER MAP M11-31 (NOT FOUND. DESTROYED DURING CONSTRUCTION.) RESET MONUMENT WITH 5/8" IRON ROD WITH YELLOW PLASTIC CAP MARKED LONE ROCK TIMBER PLS 2291 FROM ACCESSORIES. NEW CORNER MONUMENT IS BURIED UNDER 2 FT. OF LARGE ROCKS.

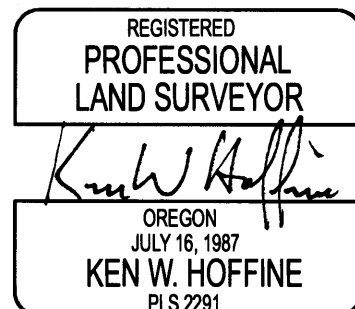
NEW ACCESSORIES:

- PK NAIL IN SOUTHERLY END OF LARGE ROCK OUTCROPPING BEARS S69°43'W 37.23 FT.
- PK NAIL IN MIDDLE OF LARGE ROCK OUTCROPPING BEARS N46°46'W 55.03 FT.
- SET 5/8" IRON ROD WITH ORANGE PLASTIC CAP MARKED LONE ROCK TIMBER PLS 2291 BEARS S88°15' E 200.55 FT.
- SET 5/8" IRON ROD WITH ORANGE PLASTIC CAP MARKED LONE ROCK TIMBER PLS 2291 BEARS N74°16' E 184.28 FT.
- A 24" X 12" TALL DOUGLAS-FIR STUMP WITH 8" MAG HUB AT CENTER BEARS S38°38' E 61.95 FT.
- A 36" DOUGLAS-FIR TREE BEARS S 5 1/2° E 42.45 FT. WE SCRIBED S 2 CW 1/16 BT AND TAGGED THE TREE.
- A 32" DOUGLAS-FIR TREE BEARS S 65° E 130.14 FT. WE SCRIBED S 2 CW 1/16 BT AND TAGGED THE TREE.

LOCATION & COMMENTS:

RECORD CORNER MONUMENT WAS A RAILROAD SPIKE AND IS BURIED UNDER SEVERAL FEET OF ROCK FILL IN A LOGGING LANDING CONSTRUCTED IN 2016. IN THE CONSTRUCTION OF THE LANDING AREA RECORD BEARING TREES WERE DESTROYED. WE WERE UNSUCCESSFUL IN RELOCATING THE RAILROAD SPIKE WITH A MAGNETIC PIN FINDER. USING EXISTING REFERENCE ACCESSORIES WE ESTABLISHED PRIOR TO CONSTRUCTION WEST AND EAST OF THE CORNER LOCATION WE SET A NEW 5/8" IRON ROD CW 1/16 MONUMENT WITH A YELLOW PLASTIC CAP. FUTURE LOGGING OPERATIONS WILL LIKELY DISTURB OR DESTROY ACCESSORIES TO THE WEST OF THE CORNER LOCATION. WE PLACED 2 FT. OF ROCK ON TOP OF THE NEW MONUMENT TO PROTECT THE CORNER FROM FUTHER DISTURBMENT.

BEARING BASIS: RECORD BEARING TREE FROM CW 1/16 AT S 74° E PREVIOUSLY TIED
FIRM/AGENCY: LONE ROCK TIMBER MANAGEMENT CO.
ADDRESS: P.O. BOX 1127 ROSEBURG, OR 97470
PARTY CHIEF: KEN W. HOFFINE
NOTES: W. ADDINGTON, D. SAILY
WITNESS: G. ANGIOLET



CS FILE 65/93-63

EXPIRES 6-30-17