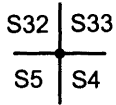


OREGON CORNER RESTORATION FORM

Section 4 Township 24 S. Range 6W
 County Douglas Date 9/22/16
 Tract Yellow Creek PLSS/GCDB 300700

FILED
 Date: 11-23-2016 By: JC
 This survey consists of:
 Map: _____
 Narrative: _____
 Corner Rpt: CS 65/93-54

Corner Designation



- _____ Condition Report Only
- _____ Not Found
- _____ Renewed
- _____ Unrecorded
- _____ Surveyed In
- X _____ Referenced Out

DOUGLAS COUNTY
SURVEYOR

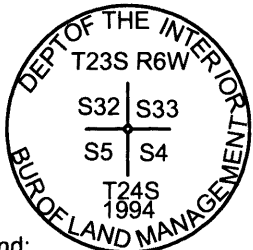
Previous Renewals/Surveys, etc.

1994 BLM Dependant Resurvey Filed in DCSO records Vol. 51 Pages 19449 - 50 , 2010 Corner Renewal
By Ward CS 65/69-26

Accessories Found: (Condition and Source)

- BT 1 25" Douglas Fir Bears N78 1/4°E 12.5 Ft. (Record N78 1/4°W 12.5 Ft.) Healed Face And Tag.
- BT 2 15" Douglas Fir Bears S7 1/4°E 60.8 Ft. (Record S4 1/2°E 60.7 Ft.) Healed Face And Tag.
- BT 3 28" Douglas Fir Bears S55°W 46.3 Ft. (Record S58°W 46.2 Ft.) Healed Face And Tag.
- 12" Cedar At Record Bearing of N14°W 29.7 Ft. Is Standing We Did Not Measure As Tree Is Behind Small Rock Bluff
- 1957 Erroneous Pipe Bent And With No Cap Bears S16°57'30"W 23.17 Ft. (Record S16°57'30"W 23.562 Ft.)

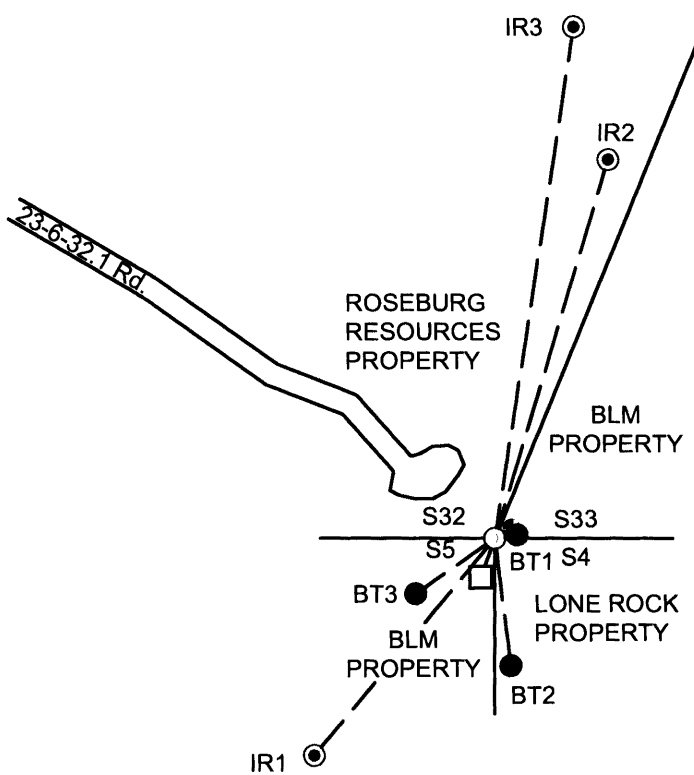
Monument Detail



Legend:

- Found 1994 BLM Cap
- Existing Bearing Trees
- Set 5/8" X 40" Iron Rod With Orange Plastic Cap Lone Rock Timber PLS 2291
- MAG HUB SPIKE
- Erroneous BLM Corner Set In 1957

Sketch



Monument Found

Found 1994 BLM BCIP

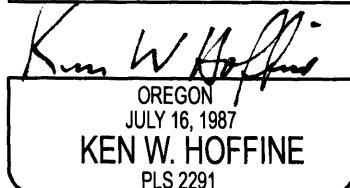
New Accessories

- IR 1 5/8" X 40" Iron Rod With Orange Plastic Cap Marked Lone Rock Timber PLS 2291 Bears S39°45'W 131.68 Ft.
- IR 2 5/8" X 40" Iron Rod With Orange Plastic Cap Marked Lone Rock Timber PLS 2291 Bears N16°34'E 183.46 Ft.
- IR 3 5/8" X 40" Iron Rod With Orange Plastic Cap Marked Lone Rock Timber PLS 2291 Bears N8°43'E 239.64' Ft.
- 8" Mag Spike In Root Of Bearing Tree Bears N59°12' E 9.26 Ft.

Location & Comments

Due to upcoming logging we visited and provided additional references for the NWSC of section 4. The monument lies directly below the landing and yarder wedges, and may get disturbed by logging operations. We set three iron rods and a mag spike to reset the monument if necessary. The corner lies on steep southeast slope in small rock bluff. Piled stones over top of monument to protect it.

Bearing Basis Assumed From BLM Dependant Resurvey 1994 BCIP To Erroneous Corner.
 Firm/Agency Lone Rock Timber Co.
 Address P. O. Box 1127
Roseburg, Ore. 97470
 Party Chief Ken W. Hoffine
 Notes G. Angiolet
 Witness I. Roman



EXPIRES 6-30-17

C.S. File No 65/93-54