

FILED
DATE: 11-8-2016 BY: JC
THIS SURVEY CONSISTS OF:
MAP: _____
NARRATIVE: _____
CORNER RPT: CS 65/93-41
DOUGLAS COUNTY SURVEYOR

FS INDEX ID: C-17

CORNER INVESTIGATION REPORT

CORNER: 1/4
TOWNSHIP: 31 S
RANGE: 2 W
SECTION: 2 & 3
MERIDIAN: W.M.

GCDB ID: 500640
STATE: OREGON
COUNTY: DOUGLAS
FOREST: UMPQUA
DISTRICT: TILLER

DATE: 9/13/2016

HISTORY OF VISITATIONS:

1857 - DENNIS HATHORN, GLO SURVEY
1966 - J. POWELL, ET. AL., CS 54/28
1978 - G. BAUGHMAN, M65-68 & M65-69

NFSL PROPERTY BOUNDARY CORNER?: YES NO

LINE(S) POSTED: NORTH-1978 SOUTH-1978

MAINTAINED: NORTH-2016 SOUTH-2016

GUARD POST(S):

CORNER HISTORY:

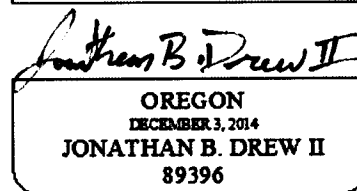
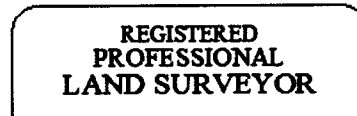
(1857) - ESTABLISHED CORNER, SETS POST & 2 BT'S.
(1966) - FINDS 2 BT'S, SETS IRON PIPE/BRASS CAP & 2 NEW BT'S.
(1978) - FINDS IRON PIPE/BRASS CAP & 4 BT'S.

MONUMENT FOUND/SET:

FOUND A 1-1/4" GALVANIZED IRON PIPE WITH A 2 1/2" BRASS CAP, PROJECTING 14 INCHES ABOVE A MOUND OF STONE.

RECORD CORNER ACCESSORIES:

A 23" OAK STUMP WITH NO MARKS VISIBLE ON A ROTTED BLAZE.
A 30" OAK WITH NO MARKS VISIBLE ON A ROTTED DOUBLE BLAZE.
A 16" FIR HIGH STUMP WITH HEALED DOUBLE BLAZE.
A 13" OAK WITH A HEALED DOUBLE BLAZE.



EXPIRES: 12/31/2017

RECORD MEASUREMENTS:

(N64°E - 63.4 FT)1857 & 1966
(S20°W - 50.2 FT)1857 & 1966
(S27°W - 43.6 FT)1966, (S27°E)1978
(N83°E - 41.3 FT)1966

NEW CORNER ACCESSORIES:

NO NEW ACCESSORIES ADDED.

METHOD OF MEASUREMENT:

NO NEW MEASUREMENTS TAKEN.
GUARD POSTS PRESENT BUT NOT MEASURED.

FILED AS CONDITION REPORT.

CORNER MAINTENANCE/OTHER INFO:

CLEAR BRUSH FROM AROUND MONUMENT AND TO BT'S. TIE FLAGGING TO MONUMENT AND GUARD POSTS, PAINT BT FACES & A 6" BAND AT HEAD HEIGHT,

GEODETIC COORDINATES:

LATITUDE: N 42° 54' 33.066"
LONGITUDE: W 122° 55' 21.419"
ELLIPSOID HEIGHT:

DATUM: NAD83

SOURCE: POST PROCESSED RESOURCE GRADE, AS REPORTED BY JACK SNYDER.

DATE OF INVESTIGATION: 08/29/2016

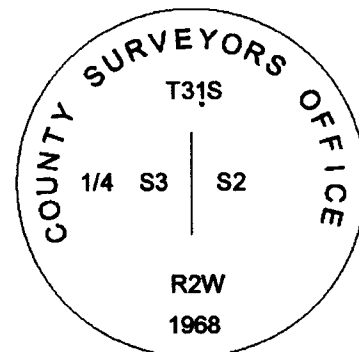
REPORT BY: ANDREW HILLMAN, SURVEY TECH.

ASSISTED BY: JACOB HUNT, SURVEY TECH.

DOCUMENTS ON FILE AT:

3106 PIERCE PARKWAY, STE. D
SPRINGFIELD, OREGON 97477

CAP DIAGRAM:



THIS DOCUMENT FILED IN CS OFFICE: YES

OTHER DOCUMENT FILED WITH CS: NONE

C.S. File No 65/93-41