

OREGON CORNER RESTORATION FORM

Section 2 Township 24 S. Range 6W

FLED

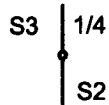
County Douglas Date 8/16/16

Date: 11-8-2016 By: SC

Tract: J23-4-2 PLSS/GCDB 500640

This survey consists of:

Corner Designation



- _____ Condition Report Only
- _____ Not Found
- _____ Renewed
- _____ Unrecorded
- _____ X Surveyed In
- _____ Referenced Out

Map: _____

Narrative: _____

Corner Rpt: CS65/93-32

DOUGLAS COUNTY SURVEYOR

Previous Renewals/Surveys, etc.

Haines 1957 Survey M 5 - 52, Douglas County Surveyors Office CS 57/21

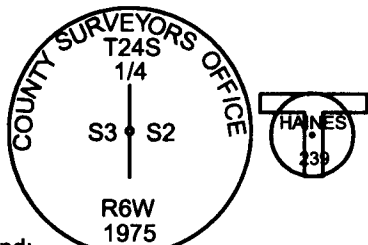
Accessories Found: (Condition and Source)

50" Douglas Fir Bears S49 1/4°W 19.9 Ft. (Record S48°30'W 19.8 Ft.) Healed Face And Tag.

Rotten Douglas Fir Stump Bears S52 1/2°E 12.3 Ft. (Record S52°20'E 12.54 Ft.) Visible Scribing

Record 12" Hemlock Per CS 57/21 Was Not Looked For

Monument Detail

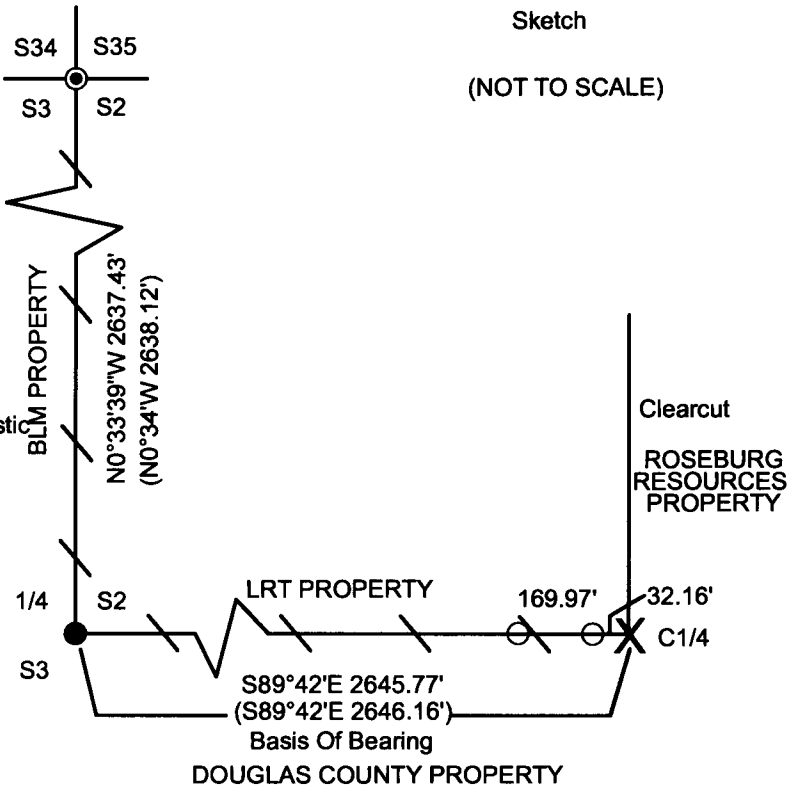


Legend:

- ⊙ Found 1943 GLO Cap
- Found 1975 County Cap
- Set 5/8" X 40" Iron Rod With Orange Plastic Cap Lone Rock Timber PLS 2291
- X Carved "x" In Bedrock
- () Record From Haines Map M 5 - 52 Filed In Douglas County Surveyors Office
- Lines Blazed, Painted, & Tagged

Sketch

(NOT TO SCALE)



Monument Found

Found County Cap With Haines T-Iron Alongside

New Accessories

36" Douglas Fir Bears N45 1/4°W 44.4 Ft. We Scribe T24S R6W S3 1/4 BT And Tag Tree

15" Douglas Fir Bears N69 3/4°E 16.2 Ft. We Scribe T24S R6W S2 1/4 Bt And Tag Tree

21" Douglas Fir Bears S49 1/2°E 55.6 Ft. We Scribe T24S R6W S2 1/4 BT And Tag Tree

Location & Comments

Beginning at the C1/4 Corner of Sections 2 T. 24 S.R. 6 W. which is a "X" carved in bedrock we ran a random traverse westerly to the W1/4 of Section 2 thence northerly to the NWSC of Section 2. Rotated our traverse to the record from Haines Survey M5-52 from the C1/4 to the W1/4. We blazed, painted, tagged, and flagged boundary lines as shown on sketch. Found County Cap for quarter corner between sections 2 and 3, with Haines T-Iron along side. Corner is located on flat bench with the termination of East - West fence line approx 3 feet south of corner.

Bearing Basis Assumed Haines Map M5-52
 C1/4 to W1/4 Section 2
 Firm/Agency Lone Rock Timber Co.
 Address P. O. Box 1127
Roseburg, Ore. 97470
 Party Chief Ken W. Hoffine
 Notes G. Angiolet
 Witness I. Roman

REGISTERED PROFESSIONAL LAND SURVEYOR

Ken W. Hoffine
 OREGON
 JULY 16, 1987
 KEN W. HOFFINE
 PLS 2291