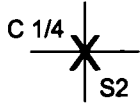


OREGON CORNER RESTORATION FORM

Section 2 Township 24 S. Range 6W
 County Douglas Date 8/16/16
 Tract J 24-6-2 PLSS/GCDB 540640

FILED
 Date: 11-8-2016 By: JC
 This survey consists of:
 Map: _____
 Narrative: _____
 Corner Rpt: CS 65/93-31

Corner Designation



- _____ Condition Report Only
- _____ Not Found
- _____ Renewed
- _____ Unrecorded
- _____ X Surveyed In
- _____ Referenced Out

DOUGLAS COUNTY
 SURVEYOR

Previous Renewals/Surveys, etc.

Haines 1957 Survey M 5 - 52, Douglas County Surveyors Office CS 62/1, & Edwards 2002 Survey M 140 - 13

Accessories Found: (Condition and Source)

15" Douglas Fir Snag Bears S13°W 7.9 Ft. As Per Record Healed Face And Tag.

33" Douglas Fir Stump Bears N61°E 81.3 Ft. As per Record Partical Healed Face

Carved "B X O" In Bedrock Bears N35°W 17.5 Ft. As Per Record

Monument Detail

Sketch

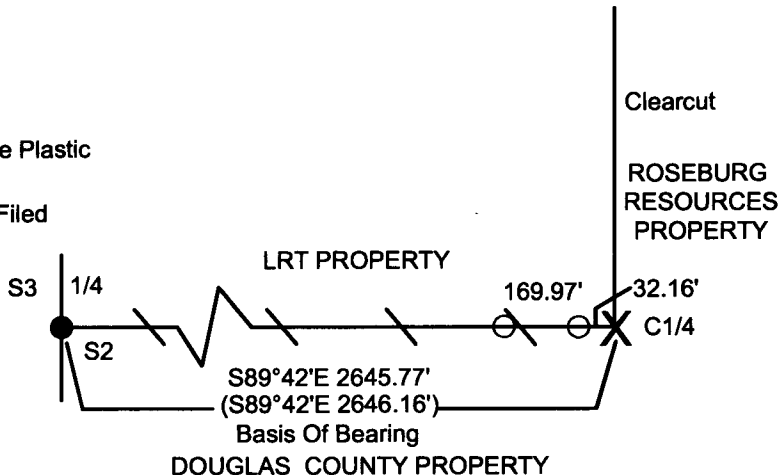
(NOT TO SCALE)

Carved "X" In Bedrock



Legend:

- Found 1975 County Cap
- Set 5/8" X 40" Iron Rod With Orange Plastic Cap Lone Rock Timber PLS 2291
- () Record From Haines Map M 5 - 52 Filed In Douglas County Surveyors Office
- / — Lines Blazed, Painted, & Tagged
- X Carved "X" In Bedrock



Monument Found

Found "X" In Large Rock Face

New Accessories

Set 5/8" X 40" Iron Rod With Orange Plastic Cap Bears N89°42'W 32.16 Ft And 0.5 Ft. Above Ground

With Metal U-Post Approx 1.0 Ft. East

Set 5/8" X 40" iron Rod With Orange Plastic Cap Bears N89°42'W 202.12 Ft. And 1.0 Ft. Above Ground

With Metal U-Post Approx. 1.25 Ft. East

Location & Comments

Beginning at the C1/4 Corner of Sections 2 T.
 24 S.R. 6 W. which is a "X" carved in bedrock
 we ran a random traverse westerly to the W1/4
 of Section 2 thence northerly to the NWSC of
 Section 2. Rotated our traverse to the record
 from Haines Survey M5-52 from the C1/4
 to the W1/4, We blazed, painted, tagged, and
 flagged boundary lines as shown on sketch.
 Found "X" in bedrock for the Center 1/4 Section 2
 on very steep south facing slope. Bearing trees are
 unavaialbe for good referencing of the C 1/4 so
 we set two intervisible iron rods on line between
 the C1/4 and the W1/4 corners.

Bearing Basis Assumed Haines Map M5-52
C1/4 to W1/4 Section 2
 Firm/Agency Lone Rock Timber Co.
 Address P. O. Box 1127
Roseburg, Ore. 97470
 Party Chief Ken W. Hoffine
 Notes G. Angiolet
 Witness I. Roman

REGISTERED
 PROFESSIONAL
 LAND SURVEYOR

Ken W. Hoffine
 OREGON
 JULY 16, 1987
 KEN W. HOFFINE
 PLS 2291

EXPIRES 6-30-17

C.S. File No 65/93-31