

OREGON CORNER RESTORATION FORM

Section 32 Township 30 S. Range 2W

County Douglas Date 8/29/16

Tract: Stonerod #3 PLSS/GCDB 220160

FILED

Date: 11-8-2016 By: JC

This survey consists of:

Map: \_\_\_\_\_

Narrative: \_\_\_\_\_

Corner Rpt: CS 65/93-30

Corner Designation

NE 1/16

•

S32

- \_\_\_\_\_ Condition Report Only
- \_\_\_\_\_ Not Found
- \_\_\_\_\_ Renewed
- \_\_\_\_\_ Unrecorded
- X \_\_\_\_\_ Surveyed In
- \_\_\_\_\_ Referenced Out

DOUGLAS COUNTY  
SURVEYOR

Previous Renewals/Surveys, etc.

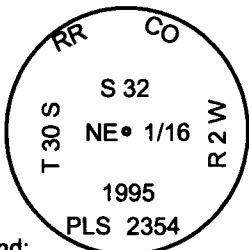
1995 Smalley Survey for Roseburg Resources Map M 121 - 77

Accessories Found: (Condition and Source)

17" White Fir Bears N44 3/4°E 22.7 Ft. (Record N50°E 22.7 Ft.) Healed Face We Retag Tree

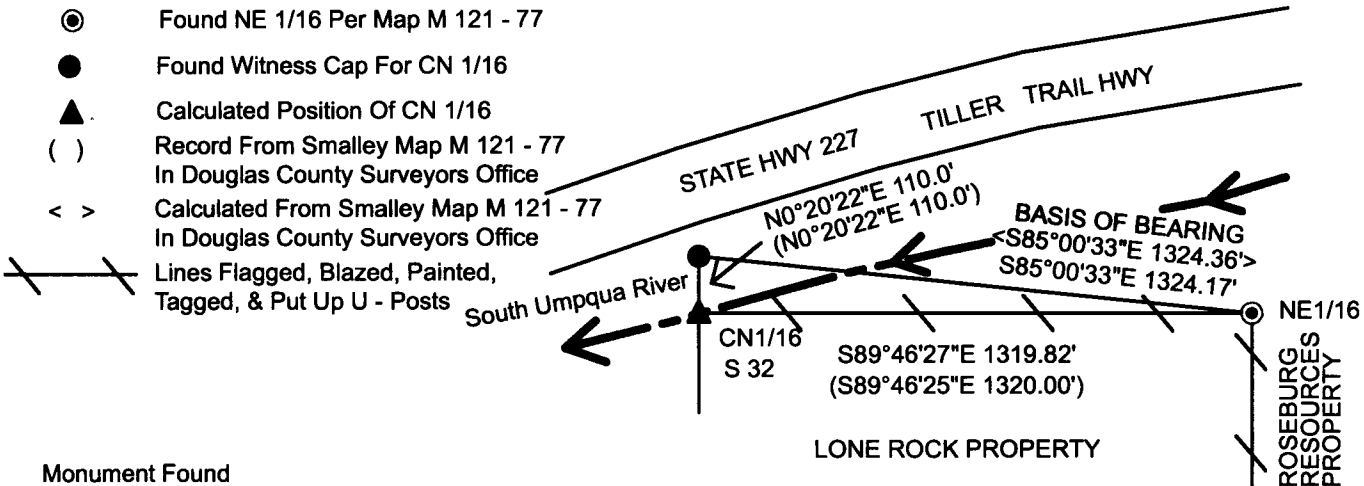
Monument Detail

Sketch



Legend:

- ⊙ Found NE 1/16 Per Map M 121 - 77
- Found Witness Cap For CN 1/16
- ▲ Calculated Position Of CN 1/16
- ( ) Record From Smalley Map M 121 - 77 In Douglas County Surveyors Office
- < > Calculated From Smalley Map M 121 - 77 In Douglas County Surveyors Office
- Lines Flagged, Blazed, Painted, Tagged, & Put Up U - Posts



Monument Found

Found Aluminum Cap 1.0 Ft. Above Ground For NE 1/16 Corner Per Map M 121 - 77

New Accessories

12" Hemlock Bears S56 3/4°E 19.5 Ft. We Scribe NE 1/16 S32 BT And Tag Tree

Location & Comments

Beginning at the NE 1/16 Corner of Section 32 T. 30 S. R. 2 W. which is a Roseburg Resources aluminum cap set in map M121 - 77, we ran a random closed looped traverse westerly to the south bank of the South Umpqua River then crossed to the north side of the river to tie in the witness corner for the CN 1/16 corner. The true position for the CN 1/16 falls the river. Then returned our traverse to the NE 1/16 to close our loop. We rotated our survey to calculated bearing from record bearings between the NE 1/16 corner to the witness corner on map M121 - 77. We then flag, blaze, paint, tag, and put metal U-Posts on property line from the NE 1/16 to the edge of the river. NE 1/16 monument lies at toe of steep north facing slope in old cat road.

Bearing Basis Assumed From Map M 121 - 77  
Computed From Witness Corner  
 To NE 1/16

Firm/Agency Lone Rock Timber Co.

Address P. O. Box 1127  
Roseburg, Ore. 97470

Party Chief Ken W. Hoffine

Notes G. Angiolet

Witness I. Roman

REGISTERED  
PROFESSIONAL  
LAND SURVEYOR

*Ken W Hoffine*

OREGON  
JULY 16, 1987  
KEN W. HOFFINE  
PLS 2291

EXPIRES 6-30-17 C.S. File No 65/93-30