

# OREGON CORNER RESTORATION FORM

Section 23 Township 29 S. Range 7 W  
 County DOUGLAS Date 9/20/2016 TRACT McCLARTY

**CORNER DESIGNATION:**

T 29 S R 7 W  
 NW 1/16 S 23  
 1981

- CONDITION REPORT ONLY
- NOT FOUND
- RENEWED
- UNRECORDED
- SURVEYED IN
- REFERENCED OUT

**FILED**

Date: 9-27-2016 By: [Signature]  
 This survey consists of:  
 Map: \_\_\_\_\_  
 Narrative: \_\_\_\_\_  
 Corner Rpt: CS 65/93-29

**PREVIOUS RENEWALS/SURVEYS, ETC.:**

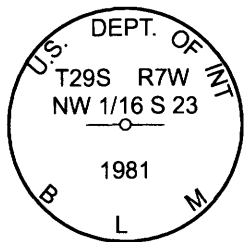
BLM SURVEY LINE NOTES PG. 16691 AND LRT RESURVEY M169-56

**DOUGLAS COUNTY SURVEYOR**

**ACCESSORIES FOUND: (CONDITION AND SOURCE)**

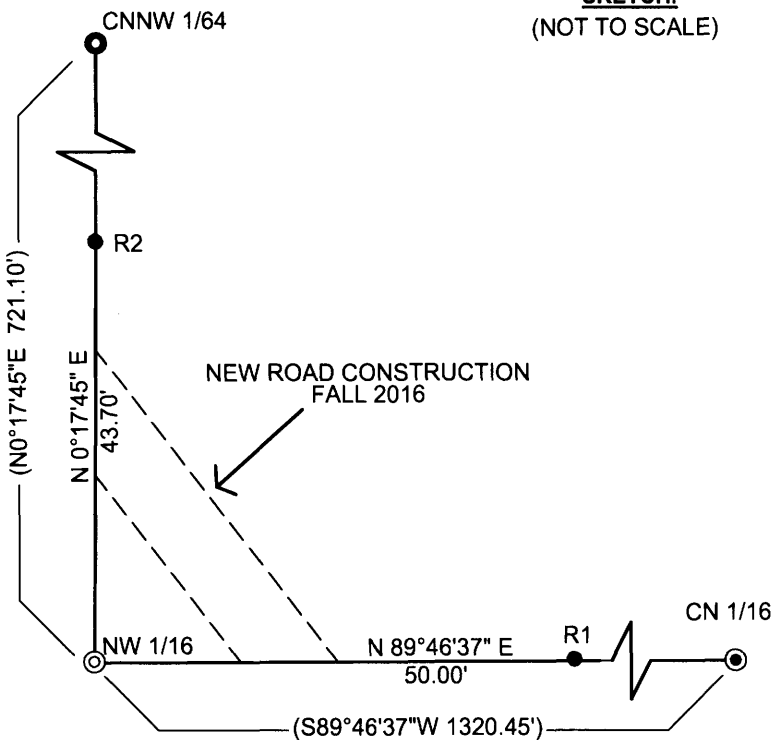
13" DOUGLAS FIR BEARS N56°E 25.8 FT (RECORD N56° 1/2°E 25.74 FT) HEALED FACE AND TAG  
 21" DOUGLAS FIR BEARS S60 3/4°W 14.3 FT (RECORD S60°W 14.85 FT) HEALED FACE AND TAG

**MONUMENT DETAIL:**



**LEGEND:**

- ⊙ FOUND 1981 BLM CAP
- ⊙ 1981 BLM CAP CN 1/16 COR. S 23
- 2015 YELLOW CAP 5/8" X 40" IRON ROD LONE ROCK TIMBER PLS 2291 CNNW 1/64 COR. S 23
- SET 5/8" X 40" IRON RODS WITH ORANGE CAP LONE ROCK TIMBER PLS 2291
- ( ) RECORD FROM 2015 LRT SURVEY M169-56 FILED IN DOUGLAS COUNTY SURVEYORS OFFICE



**MONUMENT FOUND:**

FOUND 1981 BLM BRASS CAP 0.3 FEET ABOVE GROUND. CORNER LIES ON TOP OF SMALL RIDGETOP.

**NEW ACCESSORIES:**

5/8" X 40" IRON ROD WITH ORANGE PLASTIC CAP MARKED LONE ROCK TIMBER PLS 2291 BEARS N89°46'37"E 50.00 FT. (R1)  
 5/8" X 40" IRON ROD WITH ORANGE PLASTIC CAP MARKED LONE ROCK TIMBER PLS 2291 BEARS N0°17'45"E 43.70 FT (R2)

**LOCATION & COMMENTS:**

THERE IS PLANNED 2016 ROAD CONSTRUCTION AND LOGGING ACTIVITIES NEAR THE NW 1/16 CORNER OF SECTION 23 WHICH MAY HARM THIS MONUMENT. WE FOUND THE NW 1/16 1981 BLM CORNER MONUMENT WHICH EXTENDS 0.3 FT ABOVE GROUND AND LIES ON TOP OF A SMALL RIDGETOP. LRT REFERENCED BLM NW 1/16 MONUMENT WITH TWO IRON RODS WITH ORANGE CAPS. THE NEW RODS WERE SET ON LINE USING CONTROL FROM SURVEY MAP M169-56 BETWEEN THE CN 1/16 - NW 1/16 AND THE CNNW 1/64 - NW 1/16 CORNERS. ALL FIELD WORK WAS COMPLETED ON AUGUST 26, 2016.

**BEARING BASIS:** SOLAR FROM BLM PLAT 5853 FILED IN DOUGLAS COUNTY SURVEYORS OFFICE  
**FIRM/AGENCY:** LONE ROCK TIMBER CO.  
**ADDRESS:** P.O. BOX 1127 ROSEBURG, OR 97470  
**PARTY CHIEF:** KEN W. HOFFINE  
**NOTES:** WESTON L. ADDINGTON  
**WITNESS:** I. ROMAN

REGISTERED PROFESSIONAL LAND SURVEYOR

*Ken W Hoffine*  
 OREGON JULY 16, 1987  
 KEN W. HOFFINE  
 PLS 2291

EXPIRES 6-30-17

C.S. File No 65/93-29