

**SURVEY FOR: TBT PROPERTIES LLC 2700 MELROSE ROAD ROSEBURG, OR 97470**  
**SURVEY BY: LONE ROCK TIMBER MANAGEMENT CO. P.O. BOX 1127 ROSEBURG, OR 97471**  
**W1/2 SECTION 8 AND E1/2 SECTION 7, T27S R6W W.M. DOUGLAS COUNTY, OREGON**

JULY 2016

BASIS OF BEARING  
 GEODETIC FROM  
 GPS OBSERVATION  
 NAD 83 (2011)

FILED  
 DATE: 7-20-2016 BY: X  
 THIS SURVEY CONSISTS OF:  
 MAP: CS 65/92-12  
 NARRATIVE: \_\_\_\_\_  
 CORNER RPT: \_\_\_\_\_  
 DOUGLAS COUNTY  
 SURVEYOR

**NARRATIVE**

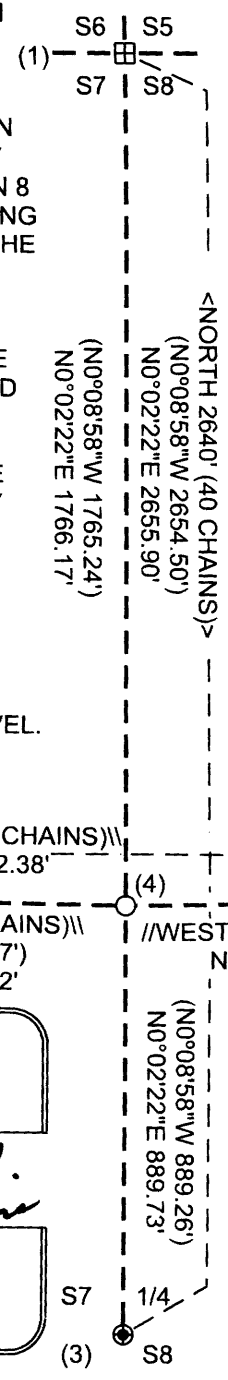
THE PURPOSE OF THIS SURVEY IS TO REESTABLISH A LOST MONUMENT SET BY ROMEY WARE IN 1984 M90-57 TO BE ON THE LINE BETWEEN SECTIONS 7 & 8 AT THE INTERSECTION OF THE SOUTH LINE OF DLC 59 (NW CORNER LOT 7 SECTION 8). THE WEST 1/4 IS A COUNTY MONUMENT PERPETUATED FROM ORIGINAL EVIDENCE AND THE NW CORNER OF SECTION 8 IS A PERPETUATED STONE (CS 44-14). THE SW CORNER OF DLC 59 IS A MONUMENT OF LONG STANDING PERPETUATED FROM THE DLC CORNER REESTABLISHED IN 1893 BY BRIGGS. THE SE CORNER IS A COUNTY MONUMENT SET 1996 FROM PERPETUATED EVIDENCE OF THE 1893 BRIGGS SURVEY. ROMEY DID NOT FIND THE SE CORNER OF DLC 59 AND SET A MONUMENT FOR THE NW CORNER LOT 7 SECTION 8 BY PROPORTION FROM ORIGINAL NOTES ALONG THE SECTION LINE. ROMEY'S POSITION OF THIS LOT CORNER FALLS IN THE TRACK OF AN OLD HEAVILY RUTTED ROAD GRADE AND IS NOW LOST. WE RE-ESTABLISHED A MONUMENT AT THE SAME ORIGINAL PROPORTIONING AS ROMEY BASED ON OUR DISTANCE BETWEEN THE SECTION AND 1/4 CORNER. WE ALSO SET A REFERENCE ROD NORTH 11.26 FEET IN A FENCELINE AT THE INTERSECTION OF THE SECTION LINE AND THE DLC LINE BETWEEN THE MONUMENTS OF RECORD TODAY. WE CONDUCTED THIS SURVEY WITH RANDOM TRAVERSES CLOSED TO GPS CONTROL WE ESTABLISHED USING GEOMAX ZIPP 20 TOTAL STATION, NIKON DTM 522 TOTAL STATION, AND TRIMBLE GEO 6000 CENTIMETER GRADE GPS.

**CORNER INFORMATION**

1) THE SECTION CORNER OF SECTIONS 5, 6, 7 AND 8, T27S R6W W.M. (GCDB 200600)  
 FOUND 7" X 9" STONE WITH CROSS IN TOP AS PER CS 67/6-9.  
 --FOUND RECORD WHITE OAK BEARING TREES AS PER CS 67/6-9.  
 CORNER LIES WEST OF MELROSE SCHOOL AND SOUTH OF PARKING LOT AT GROUND LEVEL.

2) SOUTHEAST CORNER OF DLC #59. (GCDB 059040)  
 FOUND 1996 DOUGLAS COUNTY SURVEYOR'S BRASS CAP AS PER CS 64/66-14.  
 --14" WHITE OAK BEARS N36 3/4°E 30.0' (RECORD N36 1/2°E 30.3').  
 TAG AND HEALED FACE.  
 --16" WHITE OAK BEARS N83 1/2°W 44.9' (RECORD N84°W 44.4').  
 TAG AND HEALED FACE.  
 --SET 5/8" X 40" IRON ROD WITH ORANGE PLASTIC CAP MARKED LONE ROCK TIMBER LS2291 BEARS N86 1/2°W 16.2'.  
 --SET 5/8" X 40" IRON ROD WITH ORANGE PLASTIC CAP MARKED LONE ROCK TIMBER LS2291 BEARS N47° 13'E 23.42'.

3) THE QUARTER CORNER BETWEEN SECTIONS 7 AND 8  
 T27S R6W W.M. (GCDB 200540).  
 FOUND 1960 DOUGLAS COUNTY SURVEYOR'S BRASS CAP AS PER CS 64/66-13.  
 --30" DOUGLAS-FIR BEARS N16° E 19.8' (RECORD N14 1/2°E 19.1').  
 TAG AND HEALED FACE.  
 --25" BLACK OAK BEARS S54°W 52.6' (RECORD S55°W 52.9').  
 TAG AND HEALED FACE  
 --15" MADRONE BEARS N73 1/2°W 25.2' (RECORD N74°W 25.3').  
 TAG AND VISIBLE BARK SCRIBING.  
 CORNER LIES ON STEEP NORTH SLOPE 0.5' ABOVE GROUND LEVEL. T-POST 5.0' NORTH.



LEGEND	
	FOUND 7" X 9" STONE WITH CROSS IN TOP AS PER CS 67/6-9.
	FOUND DOUGLAS COUNTY SURVEYOR'S BRASS CAP.
	FOUND 1 7/8" STEEL SHAFT.
	SET 5/8" X 40" IRON ROD WITH YELLOW PLASTIC CAP MARKED LONE ROCK TIMBER PLS 2291.
	GLO LINE NOTES PAGE 5204 FILED IN THE DOUGLAS COUNTY SURVEYOR'S OFFICE.
	GLO DLC LINE NOTES PAGES 430-431 FILED IN THE DOUGLAS COUNTY SURVEYOR'S OFFICE.
	WARE'S SURVEY M 90-57 FILED IN THE DOUGLAS COUNTY SURVEYOR'S OFFICE.
	PROJECTED LINES.

4) REESTABLISHMENT WARE'S PROPORTIONED NORTHWEST CORNER OF LOT 7, SECTION 8  
 SET 5/8" X 40" IRON ROD WITH YELLOW PLASTIC CAP MARKED LONE ROCK TIMBER LS 2291.  
 --FOUND 5/8" IRON ROD MARKED DA EDWARDS LS2339 AS PER PARTITION PLAT 2004-0062 FILED IN THE DOUGLAS COUNTY SURVEYOR'S OFFICE, BEARS S58°21'E 24.44'.  
 --SET 5/8" X 40" IRON ROD, WITH ORANGE PLASTIC CAP MARKED LONE ROCK TIMBER LS2291, IN FENCELINE AT INTERSECTION OF SOUTH LINE OF DLC #59 AND WEST LINE OF SECTION 8, 0.1' ABOVE GROUND LEVEL BEARS NORTH 11.26'  
 --6"X8" R.R. TIE FENCE POST BEARS N1 1/2°E 11.9'. WE TAG. CORNER LIES IN THE TRACK OF AN EXISTING DIRT ROAD NEAR A FENCE CORNER 0.1' BELOW GROUND LEVEL.

5) SOUTHWEST CORNER OF DLC #59. (GCDB 059030)  
 FOUND 1 7/8" STEEL SHAFT AS PER M90-57.  
 --SET 5/8" X 40" IRON ROD WITH ORANGE PLASTIC CAP MARKED LONE ROCK TIMBER LS 2291 IN FENCELINE, BEARS N89 3/4°E 63.5'  
 --SET 5/8" X 40" IRON ROD WITH ORANGE PLASTIC CAP MARKED LONE ROCK TIMBER LS 2291 IN FENCELINE, BEARS N1 1/4°W 81.1'  
 UNABLE TO LOCATED ORIGINAL STONE BESIDE STEEL SHAFT. CORNER LIES IN OPEN FIELD AT JUNCTION OF THREE WAY FENCE APPROXIMATELY 2 FEET NORTH OF EDGE OF GRAVEL DRIVEWAY, 0.1 FEET ABOVE GROUND LEVEL.

REGISTERED  
 PROFESSIONAL  
 LAND SURVEYOR

*Ken W. Hoffine*  
 OREGON  
 JULY 16, 1987  
 KEN W. HOFFINE  
 PLS 2291  
 EXPIRES: 6/30/2017