

OREGON CORNER RESTORATION FORM

Section 10 Township 26 S. Range 2W  
 County Douglas Date 9/14/2015

**FILED**

Date: 10-28-2015 By: Jc  
 This survey consists of:  
 Map: \_\_\_\_\_  
 Narrative: \_\_\_\_\_  
 Corner File: CS 65/89-45

Corner Designation



- \_\_\_\_\_ Condition Report Only
- \_\_\_\_\_ Not Found
- X Renewed
- \_\_\_\_\_ Unrecorded
- \_\_\_\_\_ Surveyed In
- \_\_\_\_\_ Referenced Out

**DOUGLAS COUNTY**  
 SURVEYOR

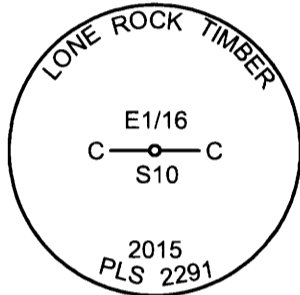
Previous Renewals/Surveys, etc.

Lecklider 1954, 1959 Survey M16 - 68 Filed in Douglas County Surveyors Office.

Accessories Found: (Condition and Source)

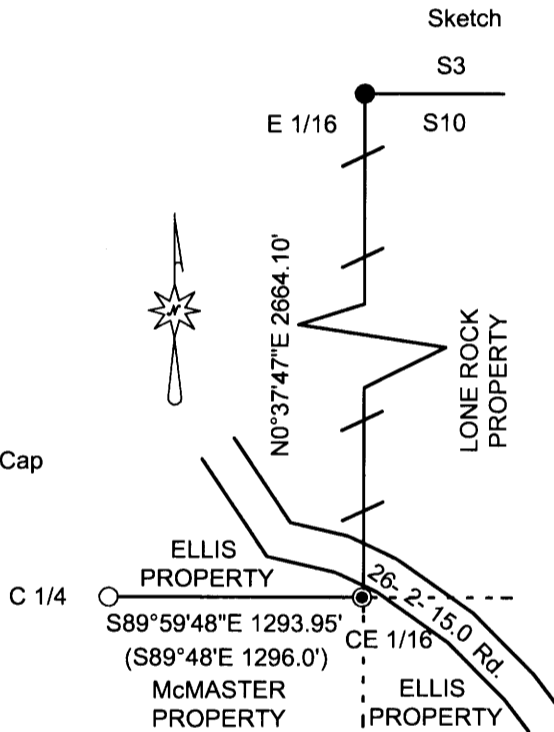
33" Douglas Fir Bears S56 1/2°E 41.3 Ft. (Record From Map M 16 - 68 Bears S55°E 41.7 Ft.) Well Healed Face And Tag  
 26" Cedar Bears N57°E 9.8 Ft. (Record From M 16 - 68 Bears N55°E 10.5 Ft.) Well Healed Face  
 Found Heavy Metal Fence Post N69 1/2°E 0.74 Ft. From Corner Position.

Monument Detail



Legend:

- BLM Brass Cap
- ⊙ Set 5/8" X 40" Iron Rod With 2 1/2" Aluminum Cap
- Lecklider Survey Cap Per Map 16-68
- ( ) Lecklider Map M 16-68
- ⚡ Property Lines Flagged, Blazed, And Tagged



New Accessories

Set 5/8" X 40" iron rod with 2 1/2" aluminum cap marked Lone Rock Timber CE 1/16 S10 2015 PLS 2291 at distance distance intersection from record bearing trees.

Location & Comments

Lone Rock Timber conducted survey traverses between established corners to locate property lines in section 10. During the course of this survey we looked for but could not find the Lecklider Iron rod with aluminum cap per survey map M16-68 for the CE 1/16 corner. Corner location is approx. 15 feet south of dirt road 26-2-15.0 in extremely rocky soil. We found both record bearing trees in good condition. Therefore we did a distance distance intersection from said bearing trees to determine corner location. We set a 5/8" X 40" iron rod with 2 1/2" aluminum cap at calculated corner position 36" into the ground and piled mound of stones around corner monument.

Bearing Basis	Solar from 1960 BLM Plat SWSC to S 1/16
Firm/Agency	between sections 9 & 10 Lone Rock Timber Co.
Address	P. O. Box 1127 Roseburg, Or. 97470
Party Chief	Ken W. Hoffine
Notes	G. Angiolet
Witness	I. Roman, Katie Nichols

REGISTERED  
 PROFESSIONAL  
 LAND SURVEYOR

*Ken W Hoffine*

OREGON  
 JULY 16, 1987  
 KEN W. HOFFINE  
 PLS 2291

EXPIRES 6-30-17

C.S. File No CS 65/89-45