

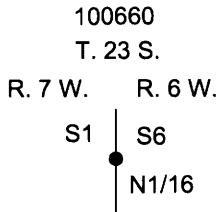
OREGON CORNER RESTORATION FORM

Section 6 Township 23 S. Range 6W
 County Douglas Date 8/25/2015

FILED

Date: 10/28/2015 By: X
 This survey consists of:
 Map: _____
 Narrative: _____
 Corner Mpt: CS 65/89-44

Corner Designation



- _____ Condition Report Only
- _____ Not Found
- X _____ Renewed
- _____ Unrecorded
- _____ Surveyed In
- _____ Referenced Out

**DOUGLAS COUNTY
SURVEYOR**

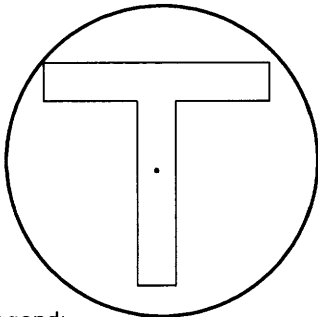
Previous Renewals/Surveys, etc.

Haines 1954, 1955 Survey CS 42/13 and Haines 1958 Survey M 11-25 Filed in Douglas County Surveyors Office.
 Hoffine 1991 Survey M 111-72 and Hoffine 2011 Survey M 163-2 Filed in Douglas County Surveyors Office

Accessories Found: (Condition and Source)

50" Douglas Fir Bears S23 3/4°W 37.5 Ft. (Record From Map CS 42 / 13 S25°W 37.2 Ft.) Well Healed Face, Tag, And Washer
 50" Douglas Fir Stump Bears N45 3/4°W 13.1 Ft. (Record From CS 42 /13 N47°W 13.7 Ft.) Well Healed Face, Tag, And Washer

Monument Detail



Legend:

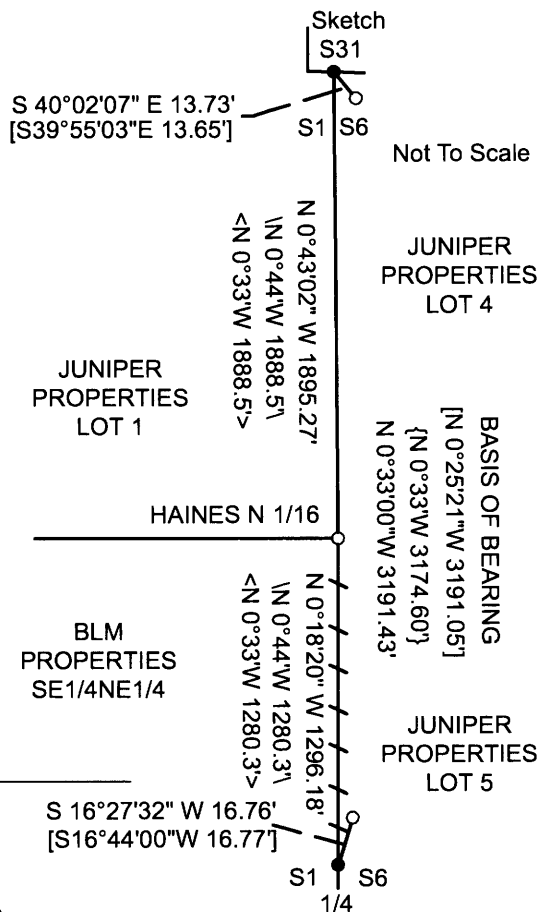
- BLM Brass Cap
- Haines T-Iron With Washer
- < > Haines Map M 11 - 25
- \ \ Haines Map CS 42\13
- { } BLM Field Notes Pages 12656 And 12657
- [] Hoffine Map M 163 - 2
- // \ 1960 BLM Plat
- / — Lines Blazed, Painted, and Tagged

Monument Found

Found Haines T-Iron With Brass Washer Bent Over, We Straighten

Location & Comments

Lone Rock Timber conducted a survey to determine the location for the property line on the west line of lot 5 in section 6 T. 23 S. R. 6W. for timber harvest purposes. Wilford Haines in 1954-1955 map CS 42/13, established the W 1/4 and the NW corners of section 6. Haines also establishes at this time N 1/16 corner(NW corner of lot 5 in section 6, SE corner of lot 1 in section 1). These corners monumented with T-Irons have been located as shown on this form. The BLM in 1957 set their own corners (Brass Caps) for the W 1/4 and the NW corners of section 6 which are 13 to 16 feet different from the Haines T-Irons. In 1958 Haines subdivides and maps M11-25 section 1, T. 23 S. R. 7 W. giving reference to the BLM monuments at the NW and W1/4 corner of section 6 but uses the same N 1/16 T-Iron for sections 1 and 6 he established in 1955. Haines provides the same distances as on his 1955 map as he has on his 1958 map which he references to different monuments and should be different distances. Haines N 1/16 T-iron bears N39 1/2°E 8.39 feet from our computations for the true location of the N 1/16 between BLM 1/4 and section corner. Haines N 1/16 T-iron he established has stood for over 50 years as the property corner for numerous timber harvests in the area and I accept his location as the N 1/16 corner for marking property lines.



Bearing Basis Record Bearing From 1960 BLM Plat BLM W1/4 To BLM NWSC
 Firm/Agency Lone Rock Timber Co.
 Address P. O. Box 1127
Roseburg, Ore. 97470
 Party Chief Ken W. Hoffine
 Notes G. Angiolet
 Witness D. Saily and I. Roman

REGISTERED
PROFESSIONAL
LAND SURVEYOR

Ken W. Hoffine

OREGON
JULY 16, 1987
KEN W. HOFFINE
PLS 2291

EXPIRES 6-30-17

C.S. File No CS 65/89-44