

FILED

Date: 9-30-2015 By: XC

This survey consists of:

Map: \_\_\_\_\_

Narrative: \_\_\_\_\_  
Corner Rpt: CS 65/89-27

DOUGLAS COUNTY  
SURVEYOR

CORNER REPORT FORM

Section 2 Township 31S Range 3W  
Douglas County Date 9/2015  
PLSS Number 600700

CORNER DESIGNATION

See Cor 536  
52 | 51



Condition Report only  
Not Found  
Renewed  
Unrecorded  
Surveyed In  
Referenced out

Previous Renewals/Surveys, etc:

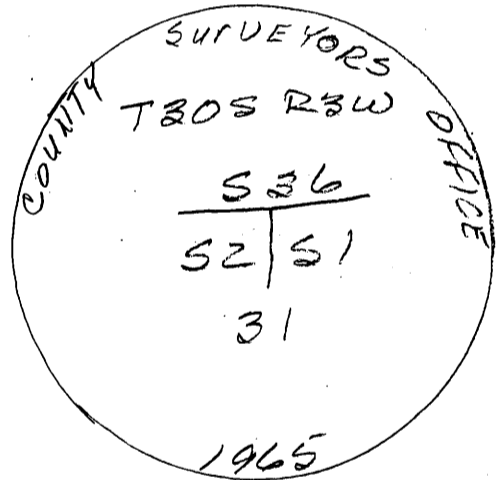
MARKHAM 1969 CS 42/392 William Pipeline 2015 M.160-46  
DCSO 1965 CS 52/63

Monument(s) & Accessories Found: (Condition and Source)

DCSO 2 1/2" BRASS CAP  
11" FIR EAST 6 1/2 FT VIS. SCRIBES  
10" FIR S 21° E 22 3/4 FT VIS SCRIBES  
8" FIR S 19° W 7 1/2 FT VIS SCRIBES

Monument Detail

Sketch



Monument Set (Procedures and Description)

New Accessories

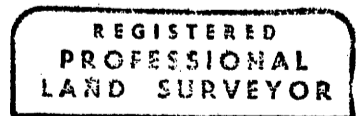
Location & Comments

AREA BURN  
8/2015

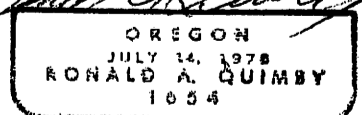
Compass Declination 15 1/2° E  
Firm/Agency: i.e. Engineering, Inc.  
Address: 809 SE Pine St., Roseburg, OR 97470

Party Chief:  
Notes:  
Witness:

Surveyor's Seal



*Ronald A. Quimby*



EXP 12-31-16

C.S. File 65/89-27