

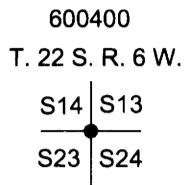
OREGON CORNER RESTORATION FORM

Section 23 Township 22 S. Range 6W
 County Douglas Date 6/12/2015

FILED

Date: 8-31-2015 By: JC
 This survey consists of:
 Map: _____
 Narrative: _____
 Corner Rpt: CS 65/89-24

Corner Designation



- _____ Condition Report Only
- _____ Not Found
- X Renewed
- _____ Unrecorded
- _____ Surveyed In
- _____ Referenced Out

DOUGLAS COUNTY
 SURVEYOR

Previous Renewals/Surveys, etc.

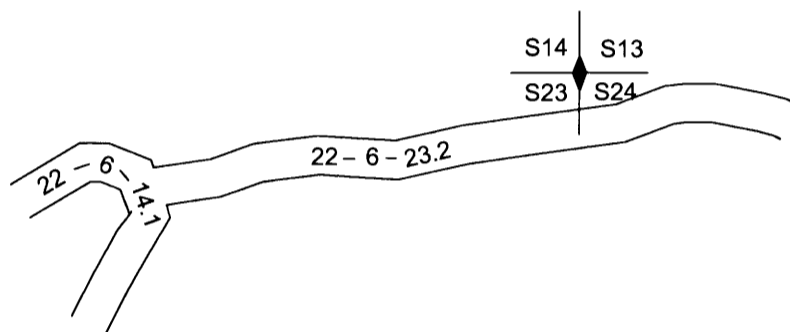
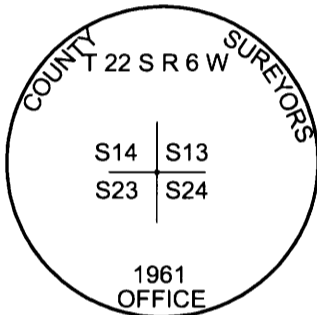
Douglas County Set Brass Cap In CS File 49 /143, BLM Resurvey by Bedell in Vol. 51 Pages 19434 - 35,
 Hoffine Map M 136-56 Found Corner To Be Badly Bent to the Southwest.

Accessories Found: (Condition and Source)

28" Douglas Fir New Stump Bears N42 3/4°E 46.7 Ft. (Record From Map M 136-56 N42 3/4°E 46.8 Ft.) Healed Face And Tag
 22" Douglas Fir Stump Bears S10 1/4°W 76.2 Ft. (Record From Map M 136-56 S10°W 76.8 Ft.) Healed Face And Tag
 25" Douglas Fir Stump Bears S7 3/4°E 59.8 Ft. (Record From Map M136-56 S7 3/4° 60.0 Ft.) Healed Face And Tag

Monument Detail

Sketch



Monument Found

Found 1961 County Cap Bent approx. 70 Degrees To The East with 1/2" Iron Pipe Along Side Also Bent.

New Accessories

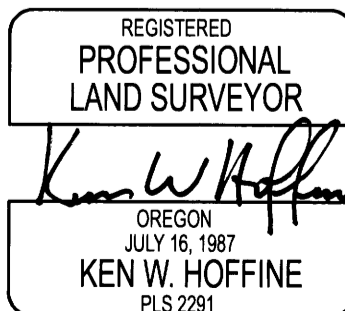
Set 5/8" X 40" Iron Rod With Yellow Plastic Cap Marked Lone Rock Timber LS 2291 Bears S40°30' W 75.65 Ft. We put 5.5 foot metal fence post approx. 1 foot south of Iron Rod.

Set 5/8" X 40" Iron Rod With Yellow Plastic Cap Marked Lone Rock Timber LS 2291 Bears S58°11' W 102.55 Ft. We put 5.5 foot metal post 1.2 feet north of Iron Rod.

Location & Comments

Due to upcoming logging we were asked to protect the section corner because the logger needs to load logs at the corner location. Found 1961 Douglas County Cap badly bent. We dig up corner and put a 5/8" X 40" Iron Rod with yellow plastic cap marked Lone Rock Timber LS 2291 in the center of the hole that the corner came out of 0.5 feet below ground level. We then took the 1961 county cap and 1928 3/4" iron pipe set by Irving back to our shop and straighten both pipes. At completion of logging operations we uncovered the iron rod with plastic cap and replaced it with the straightened county cap with the Irving iron pipe on the east side of said cap. We rechecked our distances to bearing trees and put a 5.5 foot metal post approx. 3.0 feet north of corner location. The corner lies approx. 15 feet north of the 22-6-23.2 road in newly logged area to the northeast.

Bearing Basis	<u>Record Bearing N42 3/4°E</u>
	<u>To 28" D. Fir Bearing Tree</u>
Firm/Agency	<u>Lone Rock Timber Co.</u>
Address	<u>P. O. Box 1127</u>
	<u>Roseburg, Ore. 97470</u>
Party Chief	<u>Ken W. Hoffine</u>
Notes	<u>G. Angiolet</u>
Witness	<u>I. Roman</u>



EXPIRES 6-30-17

C.S. File No 65/89-24