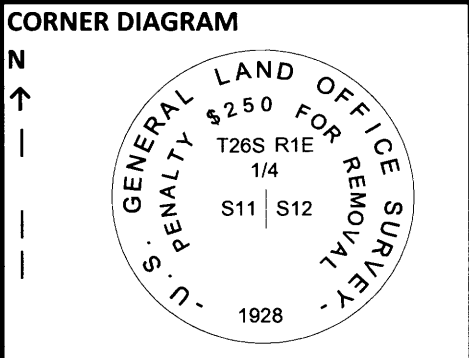


USDA-FOREST SERVICE

Index

CORNER RECORD (SEARCH)

File No. G 21 PROJ. NO. _____ CORNER 1/4
 TOWNS. 26 S RANGE 1 E R.D. North Umpqua COUNTY Douglas GCDB# 600540
 MERID. Wil. FOREST Umpqua STATE Oregon



DESCRIBE CORNER MONUMENT FOUND
 Found a 2 1/2 inch diameter brass cap on a 1 inch diameter galvanized iron pipe projecting 12 inches above the ground, loose and leaning.

DESCRIBE BEARING TREES OR OTHER OFFICIAL ACCESSORIES FOUND

DIA	TYPE	BEARS	DIST	FACE/MARKINGS
	None			

PHOTO IDENTIFICATION DATA
 Photo No. _____
 Filed At. _____
 Obj. Ident. _____
 Ident. By _____
 Signature _____

FILED
 Date: 8-19-2015 By: SC
 This survey consists of:
 Map: _____
 Narrative: _____
 Corner Rpt: CS 65/89-23

DOUGLAS COUNTY SURVEYOR

PLANE COORDINATE POSITION DATA
 State _____ Zone _____
 North _____
 West _____
 Estab. By _____

DESCRIBE CORNER LOCATION RELATIVE TO NEAR-BY FEATURES, ALSO HOW TO REACH CORNER
 Follow Forest Road 4713-100 to the junction with 4713-120. Walk northwest on Road 4713-100 about 115 feet. The corner is West 345 feet on a west facing slope.

Signature _____ Title _____ Division _____ Headquarters _____ Date 7100-52 (3/68)

CORNER RECORD (PERPETUATION)

MONUMENT : DESCRIBE NEW MONUMENT SET, OR WORK DONE TO PRESERVE EXISTING MONUMENT
 I straightened and fortified the monument such that it is firm and projecting 9 inches above the ground.

ACCESSORIES : DESCRIBE NEW BT'S WITNESS OBJECTS ETC. ESTABLISHED, OR WORK DONE TO PRESERVE EXISTING EVIDENCE
 A new 18" D. Fir brs. N 34 1/2° W, 6.2 ft., marked "1/4S11" "BT" on a double blaze.
 A new 24" D. Fir brs. S 72° E, 17.9 ft., marked "1/4S12" "BT" on a double blaze.
 A new 16" D. Fir brs. S 15 1/2 W, 16.9 ft., marked "X" "BT" on a double blaze.
 Placed an aluminum guard post with monument sign 2 feet south of the monument.

DONE BY: Hillman TITLE Tech DATE 1/2015
 Certified Cor. Record Prepared? _____ Filed At: _____

exp 12-31-2016
 REGISTERED PROFESSIONAL LAND SURVEYOR

REMARKS
 Measurements made with staff compass (15 3/4° declination) and a steel tape.

John Ransom
 OREGON JULY 21, 1992 JOHN C. RANSOM 2561

Index File No G 21 T. 26 S R. 1 E M. Wil. Proj No. _____ Cor. 1/4

C.S. File No 65/89-23