

OREGON CORNER RESTORATION FORM

Section 34 Township 32 S. Range 5W
 County Douglas Date 4/14/15

FILED
 Date: 8/19/2015 By: X
 This survey consists of:
 Map: _____
 Narrative: _____
 Corner Rpt: CS 65/89-21

Corner Designation

440200
 S27 1/4
 S34

- _____ Condition Report Only
- _____ Not Found
- X Renewed
- _____ Unrecorded
- _____ Surveyed In
- _____ Referenced Out

DOUGLAS COUNTY
 SURVEYOR

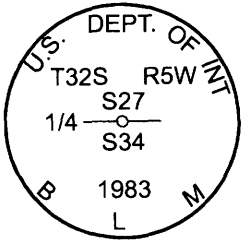
Previous Renewals/Surveys, etc.

Perpetuated by BLM in 1983 in Vol. 47 page 17880 - 81 Filed in Douglas County Surveyors Office.

Accessories Found: (Condition and Source)

31" Fir Five Foot Tall Stump With Chopped Out Face Bears S84 1/4°E 34.4 Ft. (Record S86°E 33.66 Ft.)
 19" White Fir Bears N20 1/2°W 31.4 Ft. (Record N22 3/4°W 31.68 Ft.) Healed Face And Tag

Monument Detail



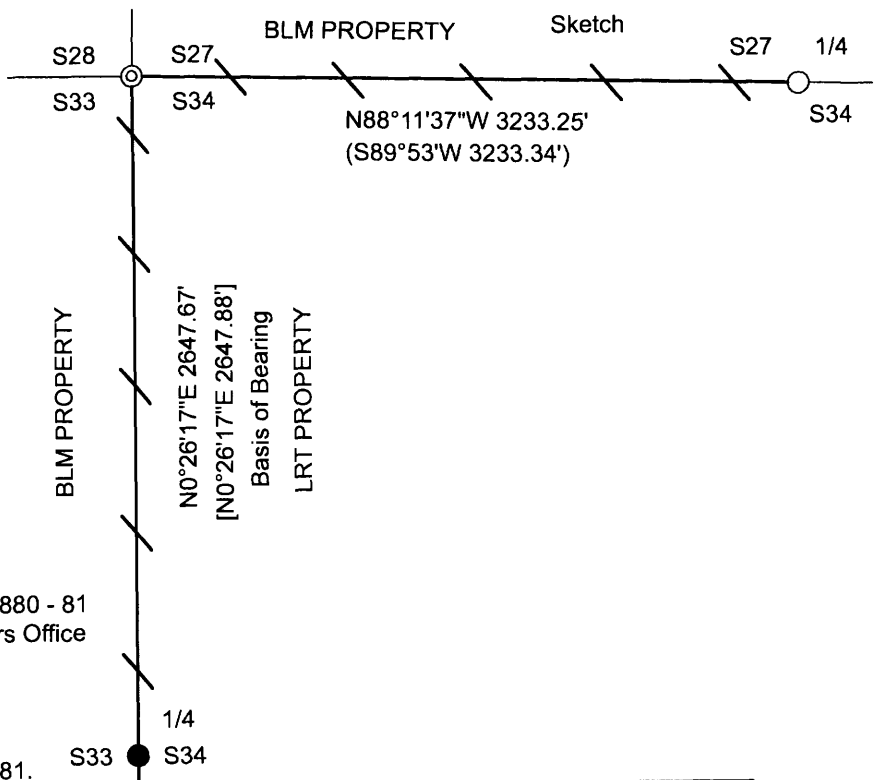
Legend:

- ⊙ Found 1967 County Cap
- Found 1977 Holt Cap Per Map M65-44
- Found 1983 BLM Cap
- [] Holt 1977 Map M65-44 Filed In Douglas County Surveyors Office
- () BLM Field Notes Vol. 47 Page 17880 - 81 Filed In Douglas County Surveyors Office

— / — Lines Blazed, Painted, & Tagged

Monument Found

Found 1983 BLM Cap Per Vol. 47 pages 17880-81.



New Accessories

26" Douglas Fir Bears S69 3/4°W 11.8 Ft. We Scribe T32S R5W 1/4 S34 BT And Tag Tree.

Location & Comments

Corner lies approx. 80 ft. east of small draw, with old logging unit to the Northeast. We ran a random traverse starting at the North 1/4 corner of section 34 and running westerly to the Northwest section corner of section 34 then continuing southerly to the West 1/4 of section 34. We blazed, painted, and tagged true line from the North 1/4 corner to the Northwest section corner to the West 1/4 corner of section 34.

Bearing Basis Assumed from Holt Map M 65-44
 Firm/Agency Lone Rock Timber Co.
 Address P. O. Box 1127
Roseburg, Ore. 97470
 Party Chief Ken W. Hoffine
 Notes G. Angiolet
 Witness G. Angiolet

REGISTERED
 PROFESSIONAL
 LAND SURVEYOR

Ken W. Hoffine
 OREGON
 JULY 16, 1987
 KEN W. HOFFINE
 PLS 2291

EXPIRES 6-30-15

C.S. File No 65/89-21