

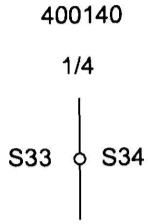
OREGON CORNER RESTORATION FORM

Section 34 Township 32 S. Range 5W  
 County Douglas Date 4/14/15

FILED

Date: 8/19/2015 By: SC  
 This survey consists of:  
 Map: \_\_\_\_\_  
 Narrative: \_\_\_\_\_  
 Corner Rpt: CS 65/89-20

Corner Designation



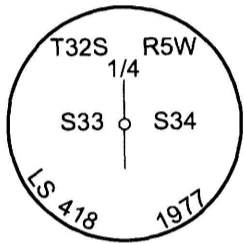
- \_\_\_\_\_ Condition Report Only
- \_\_\_\_\_ Not Found
- X Renewed
- \_\_\_\_\_ Unrecorded
- \_\_\_\_\_ Surveyed In
- \_\_\_\_\_ Referenced Out

DOUGLAS COUNTY  
SURVEYOR

Previous Renewals/Surveys, etc.  
 Set by Holt in Map M65 -44

Accessories Found: (Condition and Source)  
 No Accessories Found

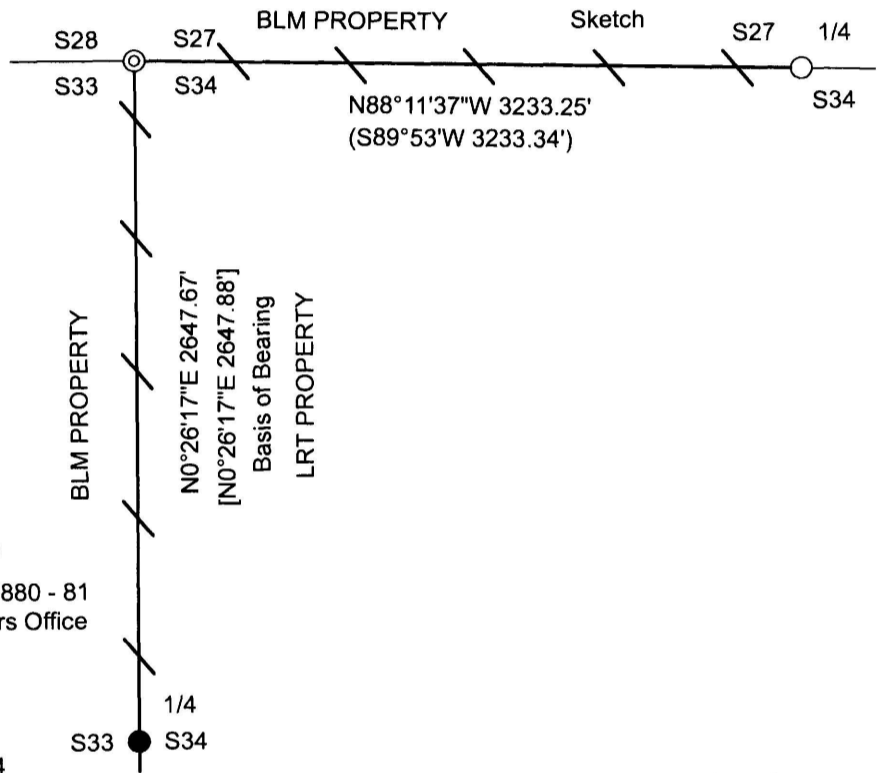
Monument Detail



Legend:

- ⊙ Found 1967 County Cap
- Found 1977 Holt Cap Per Map M65-44
- Found 1983 BLM Cap
- [ ] Holt 1977 Map M65-44 Filed In Douglas County Surveyors Office
- ( ) BLM Field Notes Vol. 47 Page 17880 - 81 Filed In Douglas County Surveyors Office
- / — Lines Blazed, Painted, & Tagged

Monument Found  
 Found Aluminum Cap As Per Holt Map M65-44



New Accessories

30" Douglas Fir Bears S48°W 9.2 Ft. We Scribe T32S R5W 1/4 S33 BT and Nail Aluminum Bearing Tree Tag To The Tree  
 18" Douglas Fir Bears N8 3/4°W 25.7 Ft. We Scribe T32S R5W 1/4 S33 BT and Nail Aluminum Bearing Tree Tag To The Tree

Location & Comments

Corner lies on steep Northwesterly slope in loose rocky area. There is no evidence of Holt 1977 bearing tree at N28°W 168.2 ft., due to precomercial thinning by BLM.  
 We ran a random traverse starting at the North 1/4 corner of section 34 then running westerly to the Northwest section corner and continuing southerly to the West 1/4 corner of section 34. We blazed, painted, and tagged true line from the North 1/4 corner to the Northwest section corner to the West 1/4 corner of section 34.

Bearing Basis Assumed from Holt Map M 65-44  
 Firm/Agency Lone Rock Timber Co.  
 Address P. O. Box 1127  
Roseburg, Ore. 97470  
 Party Chief Ken W. Hoffine  
 Notes G. Angiolet  
 Witness G. Angiolet

REGISTERED  
PROFESSIONAL  
LAND SURVEYOR

*Ken W Hoffine*  
 OREGON  
 JULY 16, 1987  
 KEN W. HOFFINE  
 PLS 2291

EXPIRES 6-30-15

C.S. File No 65/89-20