

OREGON CORNER RESTORATION FORM

Section 10 Township 26 S. Range 2W
 County Douglas Date 4/14/15

FILED

Date: 8-19-2015 By: SC
 This survey consists of:
 Map: _____
 Narrative: _____
 Corner Rpt: C.S. 65 89-19

Corner Designation

440600
 S3 1/4
 S10

- _____ Condition Report Only
- _____ Not Found
- X Renewed
- _____ Unrecorded
- _____ Surveyed In
- _____ Referenced Out

DOUGLAS COUNTY
 SURVEYOR

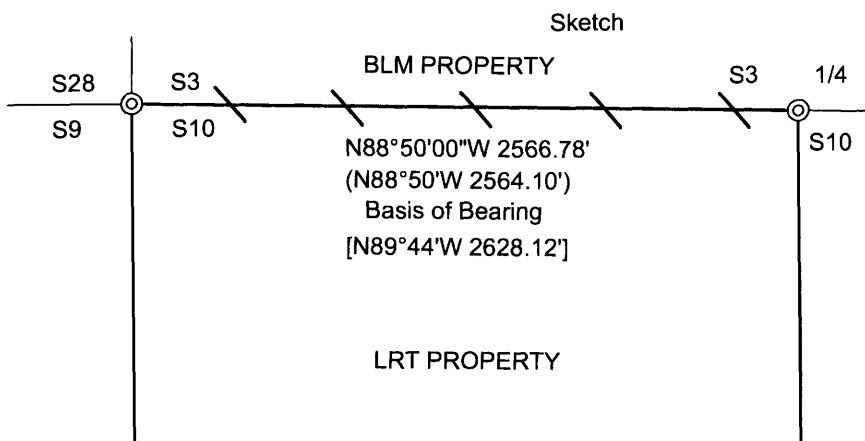
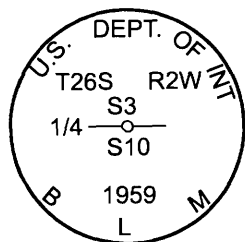
Previous Renewals/Surveys, etc.

Proportioned by BLM in 1959 in Field Notes pages 12734 & 12735 Filed in Douglas County Surveyors Office. Original GLO Field Notes Page 4209 Filed in Douglas County Surveyors Office.

Accessories Found: (Condition and Source)

23" Douglas Fir Bears S59 1/2°E 27.5 Ft. (Record S59 1/4°E 27.72 Ft.) Well Healed Face

Monument Detail



Legend:

- ⊙ Found 1959 BLM Caps
- [] Original GLO Field Notes Page 4209 Filed In Douglas County Surveyors Office
- () BLM Field Notes Pages 12734 & 12735 Filed In Douglas County Surveyors Office
- / — Lines Blazed, Painted, & Tagged

Monument Found

Found 1959 BLM Cap As Per Page 12735 filed In Douglas County Surveyors Office

New Accessories

9" Hemlock Bears N1 3/4°W 21.35 Ft. We Scribe 1/4 S3 BT And Tag Tree.

Location & Comments

Corner lies approx. 30 ft. south of small draw, on northwest slope. We ran a closed loop random traverse starting at the Northwest section corner of section 10 and running to the North 1/4 of section 10 and back to the Northwest section corner. We then blazed, painted, and tagged true line between the Northwest section corner and the North 1/4 of section 10.

Bearing Basis	Assumed from 1959 BLM Field Notes
Firm/Agency	Lone Rock Timber Co.
Address	P. O. Box 1127 Roseburg, Ore. 97470
Party Chief	Ken W. Hoffine
Notes	G. Angiolet
Witness	A. DeGroot

REGISTERED
 PROFESSIONAL
 LAND SURVEYOR

Ken W. Hoffine
 OREGON
 JULY 16, 1987
 KEN W. HOFFINE
 PLS 2291

EXPIRES 6-30-15 C.S. File No 65/89-19