

OREGON CORNER RESTORATION FORM

Section 4 Township 24 S. Range 6 W.
 County Douglas Date 4/20/15

FILED

Date 8/19/2015 By: JC

This survey consists of:

Map: _____
 Narrative: _____
 Corner Rpt. CS 65/89-18

Corner Designation

CN 1/16



340660

- _____ Condition Report Only
- _____ Not Found
- X _____ Renewed
- _____ Unrecorded
- _____ Surveyed In
- _____ Referenced Out

DOUGLAS COUNTY
SURVEYOR

Previous Renewals/Surveys, etc.

CN 1/16 Set by Johnstone for Roseburg Lumber Company in map M92-17 Filed in Douglas County Surveyors Office.

Accessories Found: (Condition and Source)

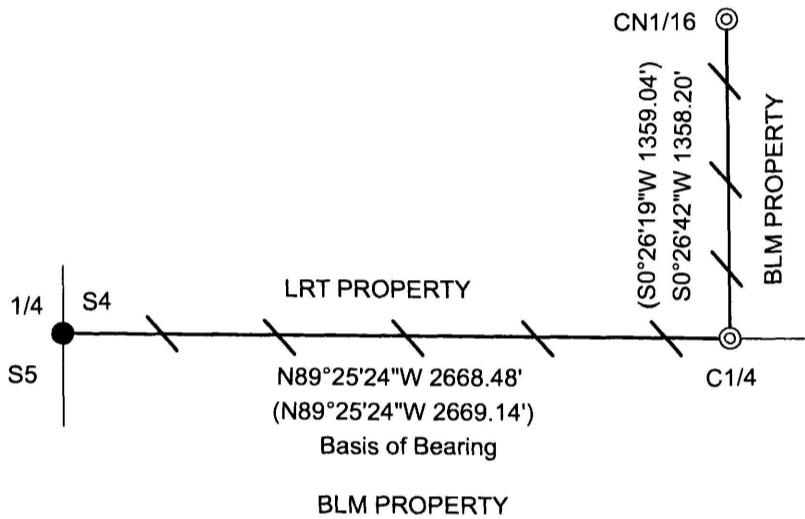
19" Yew Bears S16 3/4°W 29.85 Ft. (Record N20°E 29.7 Ft.) Visible Scribing And BT Tag

No Evidence of 12" Alder Bearing N68°W 36.6 Ft.

Monument Detail



Sketch



Legend:

- Found 1958 Douglas County Cap
- () Record from Johnstone Map M 92-17 filed in Douglas County Surveyors Office
- / — Lines Blazed, Painted, & Tagged

Monument Found

Found 1983 Johnstone Cap For CN 1/16 As Per Map M92-17 Filed In Douglas County Surveyors Office

New Accessories

14" Alder Bears S31°E 11.5 Ft. We Bark Scribe CN1/16 S4 BT And Tag Tree.

Location & Comments

Corner lies on east bank of Yellow creek with group of alders over topping corner. The corner is a 2 1/2" aluminum cap on 5/8" iron rod 1.5 feet above ground. We ran a random traverse from the Center North 1/16 corner to the Center 1/4 corner to the West 1/4 corner of section 4. We checked our traverse against Johnstone map M 92-17 for closure. We then blazed, painted, and tagged said property line between Lone Rock Timber and BLM.

Bearing Basis Assumed from Johnstone map M 92-17
 Firm/Agency Lone Rock Timber Co.
 Address P. O. Box 1127
Roseburg, Ore. 97470
 Party Chief Ken W. Hoffine
 Notes G. Angiolet
 Witness I. Roman

REGISTERED
PROFESSIONAL
LAND SURVEYOR

Ken W. Hoffine
 OREGON
 JULY 16, 1987
 KEN W. HOFFINE
 PLS 2291

EXPIRES 6-30-15

C.S. File No 65/89-18