

OREGON CORNER RESTORATION FORM

Section 4 Township 24 S. Range 6 W.
 County Douglas Date 4/20/15

FILED

Date: 8/19/2015 By: JC
 This survey consists of:
 Map: _____
 Narrative: _____
 Corner Rpt. CS 65/89-17

Corner Designation

340640
 T24S R6W
 o
 C 1/4

- _____ Condition Report Only
- _____ Not Found
- X_____ Renewed
- _____ Unrecorded
- _____ Surveyed In
- _____ Referenced Out

DOUGLAS COUNTY
 SURVEYOR

Previous Renewals/Surveys, etc.

C 1/4 Set by Johnstone for Roseburg Lumber Company in map M92-17 Filed in Douglas County Surveyors Office.

Accessories Found: (Condition and Source)

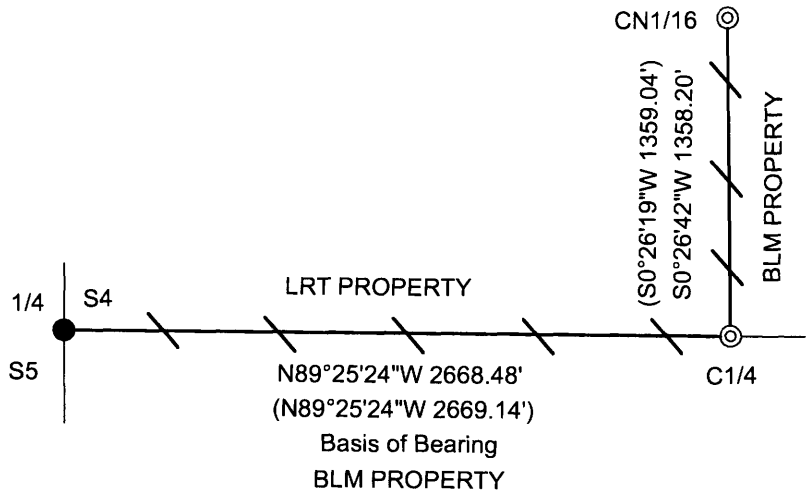
9" Maple Bears S36 3/4°E 12.8 Ft. (Record S36°E 13.0 Ft.) Visible Scribing And BT Tag

22" Maple Bears S77°W 7.7 Ft. (Record S76°W 7.8 Ft.) Visible Scribing And BT Tag.

Monument Detail



Sketch



Legend:

- Found 1958 Douglas County Cap
- () Record from Johnstone Map M 92-17 filed in Douglas County Surveyors Office
- /—/— Lines Blazed, Painted, & Tagged

Monument Found

Found 1983 Johnstone Cap For C1/4 As Per Map M92-17 Filed In Douglas County Surveyors Office

New Accessories

21" Maple Bears N73 1/2°E 16.3 Ft. We Scribe C 1/4 S4 BT And Tag Tree.

40" Fir Bears N37 1/2°W 28.0 Ft. We Scribe C 1/4 S4 BT And Tag Tree.

Location & Comments

Corner lies on extremely steep northeast facing slope in rocky bowl. The corner is a 2 1/2" aluminum cap on 5/8" iron rod 1.5 feet above ground. We ran a random traverse from the Center North 1/16 corner to the North 1/4 corner to the West 1/4 corner of section 4. We checked our traverse against Johnstone map M 92-17 for closure. We then blazed, painted, and tagged said property line between Lone Rock Timber and BLM.

Bearing Basis Assumed from Johnstone map M92-17
 Firm/Agency Lone Rock Timber Co.
 Address P. O. Box 1127
Roseburg, Ore. 97470
 Party Chief Ken W. Hoffine
 Notes G. Angiolet
 Witness I. Roman

REGISTERED
 PROFESSIONAL
 LAND SURVEYOR

Ken W Hoffine

OREGON
 JULY 16, 1987
 KEN W. HOFFINE
 PLS 2291

EXPIRES 6-30-15

C.S. File No 65/89-17