

FILED
Date: 5/11/2015 By: JC
This survey consists of:

CORNER REPORT FORM

Section 34 Township 24S Range 2W
Douglas County Date 5-2015
PLSS Number
500101

Map: _____
Narrative: _____
Corner Rpt: CS 65/89-4
DOUGLAS COUNTY
SURVEYOR

CORNER DESIGNATION

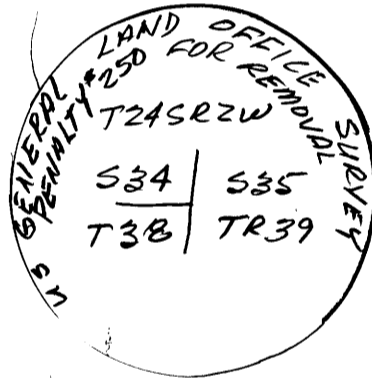
S.E COR S34
N.E COR TR 38

- Condition Report only
- Not Found
- Renewed
- Unrecorded
- Surveyed In
- Referenced out

Previous Renewals/Surveys, etc:
SET BY BLM 1951-1963

Monument(s) & Accessories Found: (Condition and Source)
FD GLO BRASS CAP

Monument Detail



Sketch

Monument Set (Procedures and Description)

//

New Accessories

- 11" Hemlock N43°E 9.6 FT Scribed T24S R2W S35 BT
- 13" Hemlock S56°E 20.4 FT Scribed T24SR2W TR39 BT
- 6" Cedar S64°W 28.4 FT Scribed T24S R2W T38 BT
- 5" Hemlock N64W 6.3 FT Scribed T24S R2W S34 BT
- See COR 34-35-2-3 bears S16°W 29.9 FT

Surveyor's Seal

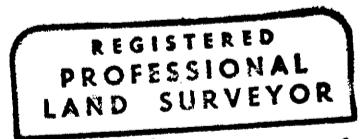
Location & Comments

Compass Declination 15 1/2
Firm/Agency: i.e. Engineering, Inc.
Address: 809 SE Pine St., Roseburg, OR 97470

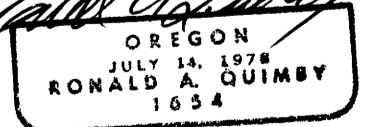
CORNER IS ON
North Facing
Slope 900'+
South of Road

Party Chief: N. Fromdahl
Notes:
Witness: R. Olsen

HAND Held
LAT 43°26.212
LONG 122°54.840



Ronald A. Quimby



EXP 12-31-16

C.S. File 65/89-4