

**SURVEY FOR: JUNIPER PROPERTIES LLC P.O. BOX 1127 ROSEBURG, OR
 SURVEY BY: LONE ROCK TIMBER MANAGEMENT CO. P.O. BOX 1127 ROSEBURG, OR 97470
 NE1/4 OF THE NE1/4 SECTION 26, T23S R6W W.M. DOUGLAS COUNTY, OREGON**

JUNE 2015

FILED

Date: 12-30-2015 By: JC
 This survey consists of:
 Map: CS 65/88-16
 Narrative: _____
 Corner Rpt. _____

NARRATIVE

THE PURPOSE OF THIS SURVEY IS TO MARK PROPERTY LINES BETWEEN EXISTING CORNERS, FOR TIMBER HARVEST AND TIMBER MANAGEMENT PURPOSES. LONE ROCK RAN A RANDOM CLOSED LOOP SURVEY FROM THE EAST 1/16TH CORNER BETWEEN SECTIONS 23 AND 26 (1) TO THE NORTH EAST 1/16TH CORNER OF SECTION 26 (2) AS SHOWN. WE THEN MARKED THE PROPERTY LINE BETWEEN THE E 1/16TH CORNER AND THE NE 1/16TH CORNER, AS SHOWN, BY BLAZING AND PAINTING TREES NEAR TRUE LINE, AND POSTING TAGS. THIS SURVEY WAS DONE WITH A NIKON DTM 522 TOTAL STATION WITH DANIEL SAILY AND IGNACIO ROMAN ASSISTING ME.

REGISTERED
 PROFESSIONAL
 LAND SURVEYOR

Ken W. Hoffine
 OREGON
 JULY 16, 1987
 KEN W. HOFFINE
 2291

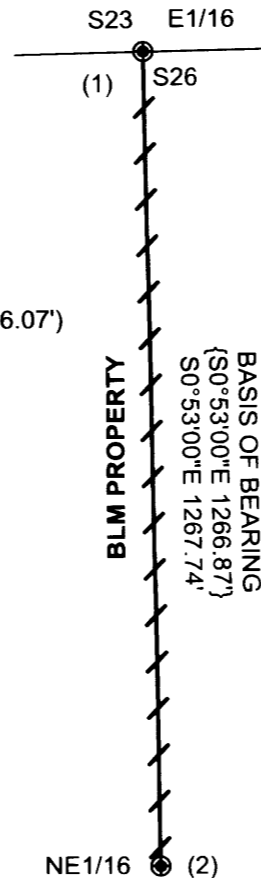
EXPIRES: 6/30/2017

DOUGLAS COUNTY
 SURVEYORS



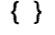
CORNER INFORMATION

- 1) THE EAST SIXTEENTH CORNER BETWEEN SECTIONS 23 AND 26
 FOUND 1994 BLM BRASS CAP AS PER MAP BLM LINE NOTES VOL 51 PAGE 19476.
 -- 34" DOUGLAS-FIR BEARS S89°W 19.98'
 WE SCRIBE E1/16 S23 BT AND TAG.
 -- 21" DOUGLAS-FIR BEARS N19°W 8.03' (RECORD N16°W 8.25')
 WELL HEALED FACE AND TAG.
 -- 15" DOUGLAS-FIR SNAG BEARS N81°W 23.87' (RECORD N76 3/4°W 24.42')
 WELL HEALED FACE AND TAG.
 -- WE FIND INVERTED MONUMENT AS PER BLM LINE NOTES, A 2.5" FLANGED IRON POST, BEARS N70 1/2°W 7.79' TO THE CENTER OF THE PIPE (RECORD N 61°29'30"W 6.07')
 -- WE FIND 30" DOUGLAS FIR BEARING TREE OF RECORD BLOWN OVER AND LYING OVER TOP OF CORNER
 WE FIND THE CORNER LYING AT APPROXIMATELY A 30° ANGLE FROM VERTICAL AND APPROXIMATELY 0.5' BELOW THE BOTTOM EDGE OF THE BLOWN OVER BEARING TREE. WE STRAIGHTEN CORNER. CORNER LIES IN SHALLOW DEPRESSION.

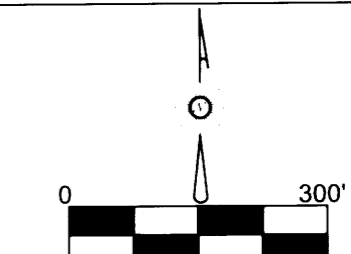
- 2) THE NORTH EAST SIXTEENTH CORNER OF SECTION 26
 FOUND 1994 BLM BRASS CAP AS PER BLM LINE NOTES VOL 51 PAGE 19515.
 -- 23" DOUGLAS-FIR BEARS S36 3/4°E 30.53' (RECORD S36°E 30.36').
 WELL HEALED FACE. WE TAG.
 -- 23" DOUGLAS-FIR BEARS N24 1/2°W 40.51' (RECORD N25°W 40.26').
 WELL HEALED FACE AND TAG.
 -- WE FIND INVERTED MONUMENT AS PER BLM LINE NOTES, A 2.5" FLANGED IRON POST LYING ON ITS SIDE APPROXIMATELY 0.2' BELOW GROUND LEVEL. WE MEASURE TO THE SPLIT IN THE PIPE AT THE FLANGE AND FIND POST BEARS N79 1/2° W 5.38' (RECORD N64°10'00"W 4.55')
 CORNER LIES ON WEST FACING SLOPE APPROXIMATELY 0.5' ABOVE GROUND LEVEL.



LEGEND

-  FOUND BRASS CAP AS PER BLM DEPENDENT RESURVEY AND CORRECTIVE SURVEY LINE NOTES VOL.51 PAGES 19476 AND 19515 FILED IN THE DOUGLAS COUNTY SURVEYORS OFFICE.
-  LINES BLAZED, PAINTED, AND TAGGED
-  BLM DEPENDENT RESURVEY AND CORRECTIVE SURVEY LINE NOTES VOL. 51 PAGES 19476 AND 19515 FILED IN THE DOUGLAS COUNTY SURVEYORS OFFICE.

JUNIPER PROPERTY



BASIS OF BEARING
 FROM BLM CORRECTIVE
 SURVEY VOL. 51 PAGE 19515