

OREGON CORNER RESTORATION FORM

Section 28 Township 22 S. Range 5W  
 County Douglas Date 6/12/15

**FILED**  
 Date: 7/2/2015 By: JC  
 This survey consists of:  
 for Map: M 168-44A & B  
 Narrative: \_\_\_\_\_  
 Corner Rpt: CS 65/88-8

Corner Designation

PROPERTY CORNER

SEE MAP M 168-44A. THE CORNER NUMBERS ON SAID MAP ARE THE SAME AS THE CORNER NUMBERS ON THIS CORNER RENEWAL.

- \_\_\_\_\_ Condition Report Only
- \_\_\_\_\_ Not Found
- \_\_\_\_\_ Renewed
- \_\_\_\_\_ X \_\_\_\_\_ Unrecorded
- \_\_\_\_\_ Surveyed In
- \_\_\_\_\_ Referenced Out

**DOUGLAS COUNTY SURVEYOR**

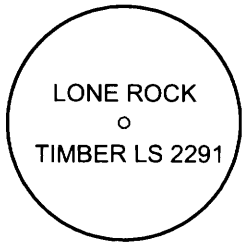
Previous Renewals/Surveys, etc.

Bloom Map M 79 - 64B and Hoffine Map M 168 - 44A Filed in Douglas County Surveyors Office.

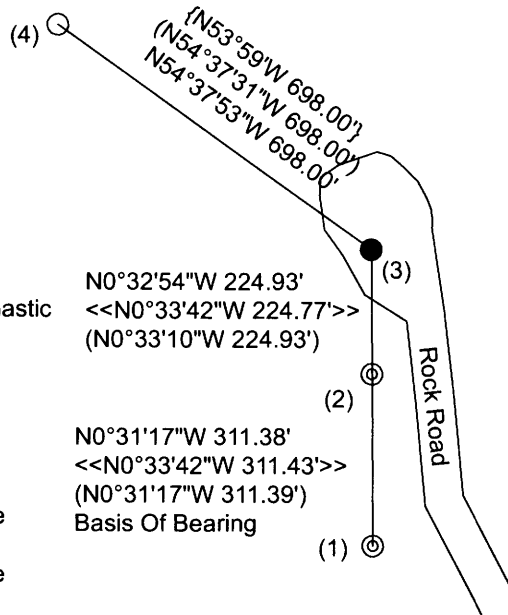
Accessories Found: (Condition and Source)

21" Fir Five Foot Tall Stump Bears S34 1/4°E 35.3 Ft. (Record S34 1/4°E 35.58 Ft.)

Monument Detail



Sketch



Legend:

- ⊙ Found Iron Rods Peer Map M 79-64B
- Set A 5/8" X 40" Iron Rod With Yellow Plastic Cap Marked Lone Rock Timber Is 2291
- Found Iron Rod With Yellow Plastic Cap Per Map M 168-44A
- << >> Bloom Map M 79-64B Filed In Douglas County Surveyors Office
- ( ) Hoffine Map M 168-44A Filed In Douglas County Surveyors Office
- { } Gardner Map RM 3-41 Filed In Douglas County Surveyors Office

Monument Found

No Monument Found It Was Destroyed In Resent Logging Operation

New Accessories

Location & Comments

We were asked to relocate property corner (3) at the west edge of large landing area. Lone Rock Timber surveyed and located the above monuments 1, 2, 3, and 4 in 2014 in map M 165-44A. We discovered that the area at approx. corner position had been disturbed by large logging equipment. We located the record bearing tree stump but did not find any trace of the record 3/4" iron bolt. We then ran a random traverse tying in corners (1) and (2) to create a basis of bearing, and then traversed and tied in corner (4). We then computed from record distance an intersection from corner (2) and corner (4) to reset the missing 3/4" bolt. We then put metal fence posts on line between corners (2), (3), and (4).

Bearing Basis Assumed From Hoffine  
 Map M 168-44A  
 Firm/Agency Lone Rock Timber Co.  
 Address P. O. Box 1127  
Roseburg, Ore. 97470  
 Party Chief Ken W. Hoffine  
 Notes D. Saily  
 Witness G. Angiolet

REGISTERED  
 PROFESSIONAL  
 LAND SURVEYOR

*Ken W Hoffine*  
 OREGON  
 JULY 16, 1987  
 KEN W. HOFFINE  
 PLS 2291

EXPIRES 6-30-17

C.S. File No 65/88-8