

SUBDIVISION SEC. 3, T.19S., R.9W., W.M.

LANE COUNTY, OREGON

FILED

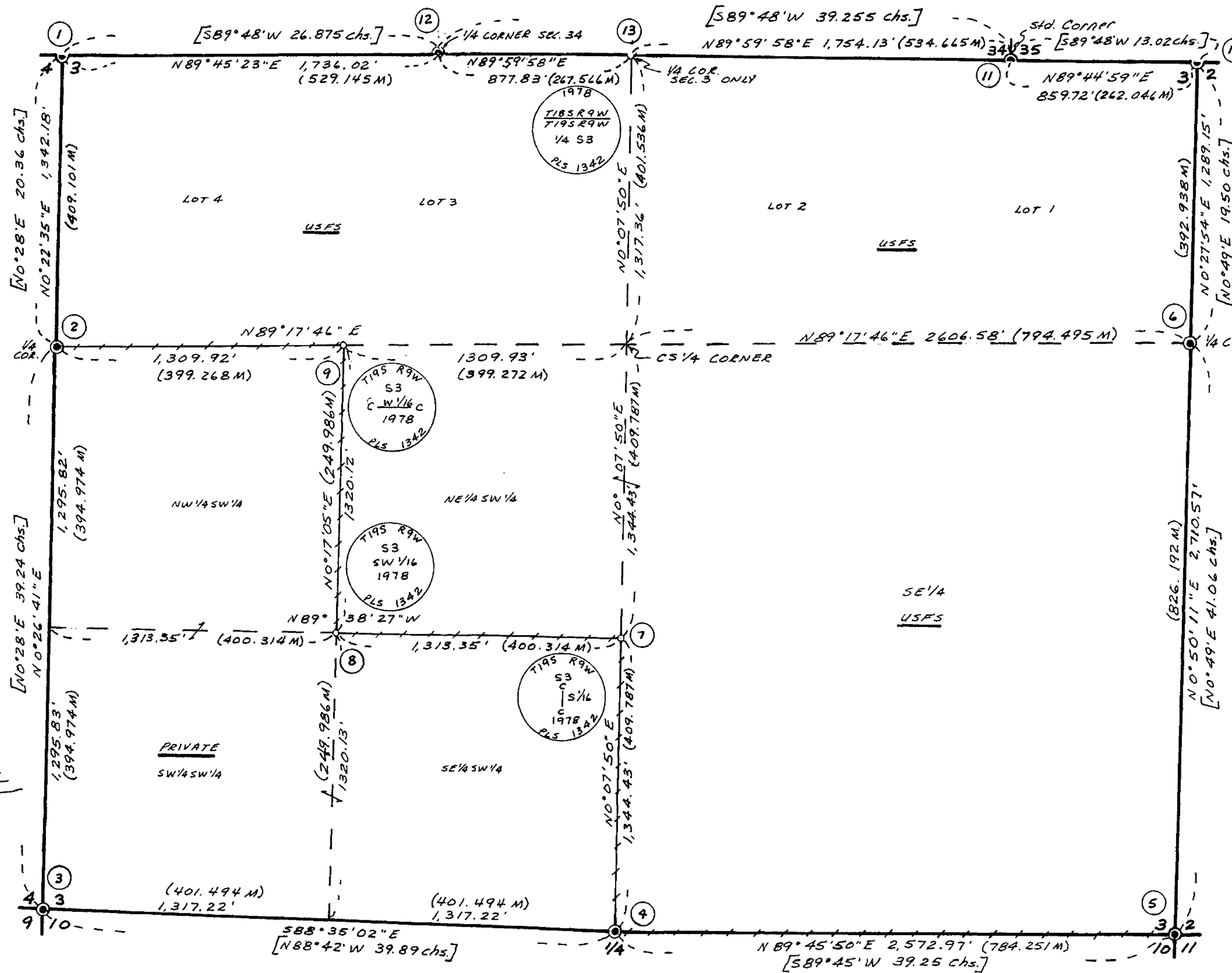
Date: 12/30/2014 By: JC
 This survey consists of:
 Map: DOWN LOADED FROM LANE CO. SURVEYORS OFFICE WEB SITE
 Narrative:
 Corner Rpt: CS 65/86-37

DOUGLAS COUNTY SURVEYOR

LANE COUNTY SURVEYORS OFFICE
 C. S. FILE NO. 22214
 SURVEY RECEIVED 9-11-78
 FILE SIZE 18 X 27
 FILING DATE 10-1-78

Corner Notes:

- ① Found 2" B.C.I.P. for closing corner to 3+4 mkd. "T185R9W 534; 54|53 T19S R9W CC 1929", from which: 30" D.fir 573°E 32 lks.; 20" D.fir 554°W 5 lks.
- ② Found 2 1/2" B.C.I.P. for 1/4 corner to sec. 3 & 4, mkd. "T19S R9W 1/4 54/53 1958" (BLM) from which: 13" D.fir N27°E 24 lks.; 13" D.fir N31 1/2°W 10 lks.
- ③ Found 2 1/2" BLM B.C.I.P. for corner to secs. 3, 4, 9 & 10, mkd. "T19S R9W 54|53 1958", from which: 19" D.fir N25°E 26 lks.; 24" D.fir 581°45'W 45 lks.; 32" D.fir N46 1/2°W 15 lks.; 14" D.fir 559 1/2°E 18 lks.
- ④ Found 2 1/2" iron pipe, cap missing, set in 1958 by BLM for 1/4 corner to 53 & 510, from which: 17" D.fir N13°W 29 lks.; 21" D.fir 553°E 5 lks.; tagged 28" D.fir (not scribed 566°E 11.8'.
- ⑤ Found 2 1/2" B.C.I.P. for corner to secs. 2, 3, 9 & 10 as set and marked in 1958 by BLM, from which: 38" D.fir 557°E 49 lks.; 20" D.fir snag 539°W 86 lks.; 32" D.fir snag N17°E 60 lks.; NW BT is a windfall, I mark new BT 40" D.fir N78°W 43.4'.
- ⑥ Found 2 1/2" B.C.I.P. (BLM), mkd. "T19S R9W 1/4 53/52 1957" from which: 30" D.fir N78°W 46 lks.; 19" D.fir 533 3/4°E 58 lks.
- ⑦ Set std. 2"x30" Alum. u.s.f.s. monument/3" cap mkd. as shown from which I scribed: 18" Hem. 587°W 41.5'; 18" D.fir stump 525°E 12.0'.
- ⑧ Set std. 2"x30" u.s.f.s. Alum. monument/3" cap for sw 1/4 corner, mkd. as shown, from which I scribe: 14" D.fir N78°W 17.5'; 20" D.fir N41°E 219.2'.
- ⑨ Set std. 2"x30" u.s.f.s. Alum. monument/3" cap for center-west 1/4, mkd. as shown, from which I scribe: 24" D.fir N53°E 18.6'; 28" Hem. 535°E 16.7'.
- ⑩ Found 2 1/2" BLM B.C.I.P. at closing corner to secs. 2 & 3, mkd. "T185 R9W 535, 53/52 CC T19S 1957", from which: 30" D.fir East 59 lks.; 24" D.fir 564°W 65 lks.
- ⑪ Found 2 1/2" BLM B.C.I.P. at std. corner to secs. 34 & 35, mkd: "5C T185R9W 534|535 1929", from which: 30" D.fir stump N54°E 10 lks.; 20" D.fir stump N81°W 64 lks.
- ⑫ Found 1" pipe BLM B.C.I.P. for 3/4 corner sec. 34 mkd. "5C 1/4 534 1929" from which: 18" Alder N55 3/4°E 11.7'; 40" D.fir N9 1/2°W 16.5'.
- ⑬ Set std. 2"x30" Alum. u.s.f.s. monument/3" cap mkd. as shown for N 1/4 corner sec. 3, from which I scribe: 36" D.fir N49°W 7.5'; 10" Hem. 521°E 4.7'.



REGISTERED PROFESSIONAL LAND SURVEYOR
 Ronald E. Stuntzner
 OREGON
 RONALD E. STUNTZNER
 1342

I, Ronald E. Stuntzner, a registered Land Surveyor in the State of Oregon, hereby certify that this plat and the notes hereon are a correct representation of a survey I performed during June and July, 1978, for the U.S. Forest Service, in accordance with the statutes of the state of Oregon and with the articles of my contract.

Ronald E. Stuntzner
 Ronald E. Stuntzner
 Registered Land Surveyor
 Oregon License #1342

Survey For:
 U.S. Forest Service
 Siuslaw National Forest
 Corvallis, Oregon 97330

Survey By:
 Stuntzner Engineering & Forestry
 P.O. Box 118
 Coos Bay, Oregon 97420

NOTE: Basis Of Bearing is Solar Observation

Date: 8/4/78
 Scale: 1" = 400'

LEGEND

- Corners Set ○
- Corners Found ●
- Property Lines Mkd. with + + + +
- metal fence posts & National Forest Bay signs
- Government Record Bearings [589°48'W 39.255 chs.] & Distances
- Metric Distance In Meters: (784.251M)

