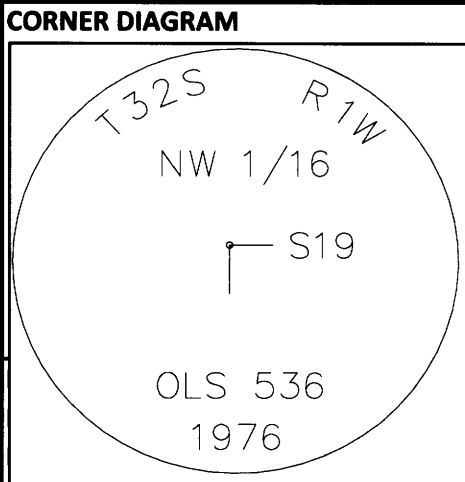


Index

CORNER RECORD (SEARCH)

File No. 0-2 PROJ. NO. ELK CORNER NW 1/16  
 TOWNS. 32 S RANGE 2 W R.D. TILLER COUNTY DOUGLAS GCDB# 120360  
 MERID. W.M. FOREST UMPQUA STATE OREGON



**CORNER DIAGRAM**  
**DESCRIBE CORNER MONUMENT FOUND**  
 FOUND 3 INCH BRASS CAP ON 2-1/2 INCH IRON POST PROJECTING 1 INCH ABOVE A 2.5 FOOT DIAMETER MOUND OF STONE.

**DESCRIBE BEARING TREES OR OTHER OFFICIAL ACCESSORIES FOUND**

DIA	TYPE	BEARS	DIST	FACE/MARKINGS
17"	FIR	S81°E	3.9 FT	HEALED DOUBLE BLAZE

CEDAR OF RECORD FALLS IN CUT BANK OF ROAD, NO TRACE FOUND (10" CEDAR N87W 58.0 FEET)

( ) = RECORD DATA

Obj. Ident. \_\_\_\_\_  
 Ident. By \_\_\_\_\_

**PLANE COORDINATE POSITION DATA**  
 State \_\_\_\_\_ Zone \_\_\_\_\_  
 North \_\_\_\_\_  
 West \_\_\_\_\_  
 Estab. By \_\_\_\_\_

**DESCRIBE CORNER LOCATION RELATIVE TO NEAR-BY FEATURES, ALSO HOW TO REACH CORNER**  
 CORNER FALLS ON EAST SIDE OF GRAVELED ROAD ABOUT 30 FEET FROM CENTERLINE, BT'S VISIBLE FROM ROAD. ALSO FALLS ON NORTHWEST CORNER OF A PRIVATE CLEAR CUT.

Signature \_\_\_\_\_ Title \_\_\_\_\_ Division \_\_\_\_\_ Headquarters \_\_\_\_\_

CORNER RECORD (PERPETUATION)

**MONUMENT : DESCRIBE NEW MONUMENT SET, OR WORK DONE TO PRESERVE EXISTING MONUMENT**  
 BRUSH CLEARED AROUND MONUMENT AND TO BT'S  
 "LAND LINE" FLAGGING TIED ON MONUMENT AND GUARD POSTS

REGISTERED PROFESSIONAL LAND SURVEYOR  
*John Ransom*  
 OREGON  
 JULY 21, 1992  
 JOHN C. RANSOM  
 2561

**ACCESSORIES : DESCRIBE NEW BT'S WITNESS OBJECTS ETC. ESTABLISHED, OR WORK DONE TO PRESERVE EXISTING EVIDENCE**  
 MARKED: A 13" FIR BEARS N7°W 18.8 FEET. SCRIBED "NW1/16S19" "BT" ON A DOUBLE BLAZE WITH 3/4" BRASS WASHER STAMPED "LS2561" NAILED IN LOWER FACE.  
 RED PAINT APPLIED TO BT FACES AND A 6" BAND AT HEAD HEIGHT, BT'S INCLUDE BT & SURVEY MONUMENT TAGS

DONE BY: Jonathan Drew TITLE LSIT DATE 9/11/2013 PLS NO./AGENCY/STATE \_\_\_\_\_  
 Certified Cor. Record Prepared? YES Filed At: DOUGLAS CO. DATE \_\_\_\_\_

**REMARKS**  
 PROPERTY LINE MAINTAINED SOUTH AND EAST .25 MILES  
 MEASUREMENTS TO BT'S MADE WITH STAFF COMPASS(15-3/4° DEC.) AND STEEL TAPE

Index File No 0-2 T. 32 S R. 2 W M. W.M. Proj No. ELK Cor. NW 1/16

C.S. File No 65/85-32