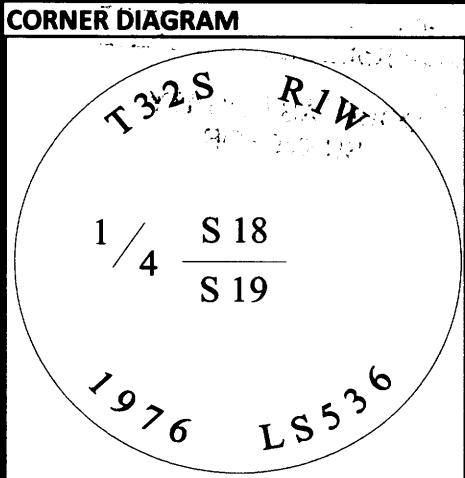


USDA-FOREST SERVICE

Index

CORNER RECORD (SEARCH)

File No. N-3 PROJ. NO. ELK CORNER 1/4
 TOWNS. 32 S RANGE 1 W R.D. TILLER COUNTY DOUGLAS GCDB# 140400
 MERID. W.M. FOREST UMPQUA STATE OREGON



DESCRIBE CORNER MONUMENT FOUND
 FOUND 3 INCH BRASS CAP ON 2-1/2 INCH IRON POST PROJECTING 3 INCHES ABOVE A 2 FOOT DIAMETER MOUND OF STONE.

DESCRIBE BEARING TREES OR OTHER OFFICIAL ACCESSORIES FOUND

DIA	TYPE	BEARS	DIST	FACE/MARKINGS
16"	FIR	S64°30'E	17.0 FT	HEALED DOUBLE BLAZE
19"	HIGH STUMP	N46°W	28.7 FT	FIR HIGH STUMP, DETACHED HEALED FACE

() = RECORD DATA

Obj. Ident. _____
 Ident. By _____
 Signature _____

DESCRIBE CORNER LOCATION RELATIVE TO NEAR-BY FEATURES, ALSO HOW TO REACH CORNER
 CORNER FALLS ON SOUTH SIDE OF GRAVELED ROAD ABOUT 30 FEET FROM CENTERLINE, BT'S VISIBLE FROM ROAD. ALSO FALLS ON SOUTH TIMBERLINE OF A PRIVATE CLEAR CUT. TAKE FS ROAD 1615 TO CORNER

PLANE COORDINATE POSITION DATA
 State _____ Zone _____
 North _____
 West _____
 Estab. By _____

Signature _____ Title _____ Division _____ Headquarters _____

CORNER RECORD (PERPETUATION)

MONUMENT : DESCRIBE NEW MONUMENT SET, OR WORK DONE TO PRESERVE EXISTING MONUMENT
 BRUSH CLEARED AROUND MONUMENT AND TO BT'S
 "LAND LINE" FLAGGING TIED ON MONUMENT AND GUARD POSTS

REGISTERED PROFESSIONAL LAND SURVEYOR
John Ransom
 OREGON
 JULY 21, 1992
 JOHN C. RANSOM
 2561

ACCESSORIES : DESCRIBE NEW BT'S WITNESS OBJECTS ETC. ESTABLISHED, OR WORK DONE TO PRESERVE EXISTING EVIDENCE
 SET: A 2" ALUMINUM CAP ON 5/8" REBAR, PROJECTING 7 INCHES ABOVE THE GROUND BEARS, N46°W - 24.6 FT.
 MARKED: A 7" FIR BEARS, N19°45'E - 16.9 FT, SCRIBED "X" "BT" ON A DOUBLE BLAZE.
 A 14" FIR BEARS, S55°W - 11.1 FT, SCRIBED "1/4 S19" "BT" ON A DOUBLE BLAZE.
 CAP MARKED "RM1 PLS2561 2013", NEW BT'S INCLUDE A 3/4" BRASS WASHER STAMPED "LS2561" NAILED TO LOWER BLAZE
 RED PAINT APPLIED TO BT FACES AND A 6" BAND AT HEAD HEIGHT, BT'S INCLUDE BT & SURVEY MONUMENT TAGS

DONE BY: Jonathan Drew TITLE LSIT DATE 9/11/2013 PLS NO./AGENCY/STATE _____
 Certified Cor. Record Prepared? YES Filed At: DOUGLAS CO. DATE _____

REMARKS
 MEASUREMENTS TO ACCESSORIES MADE WITH LEICA 1103+ TOTAL STATION WITH REFLECTORLESS EDM TO ALUMINUM NAIL SET AT SIDE CENTER, BASIS OF BEARING BEING PLAT RECORD BEARING(N89°40'39"W) (M56-69) AFTER ROTATING OPEN TRAVERSE BETWEEN THIS CORNER AND SECTION CORNER TO THE WEST MAINTAINED LINE .5 MILES WEST OF CORNER.

Index File No N-3 T. 32 S R. 1 W M. W.M. Proj No. ELK Cor. 1/4

C.S. File No 65185-24