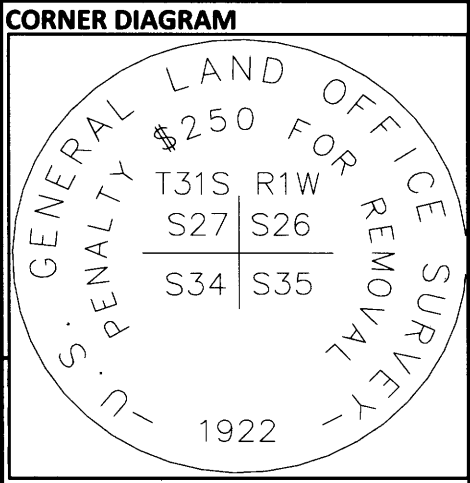


Index **CORNER RECORD (SEARCH)**

File No. V-17 PROJ. NO. ELK CORNER SECTION

TOWNS. 31 S RANGE 1 W R.D. TILLER COUNTY DOUGLAS GCDB# 500200

MERID. WM FOREST UMPQUA STATE OREGON



**DESCRIBE CORNER MONUMENT FOUND**

FOUND 2-1/2" BRASS CAP ON 2" IRON PIPE, PROJECTING 7 INCHES ABOVE A MOUND OF STONE.

**DESCRIBE BEARING TREES OR OTHER OFFICIAL ACCESSORIES FOUND**

DIA	TYPE	BEARS	DIST	FACE/MARKINGS
41"	FIR	(N47°W)	(37.0 FT)	HEALED DOUBLE BLAZE
36"	FIR	(N66°E)	(40.6 FT)	HEALED DOUBLE BLAZE
25"	FIR	(S24°30'E)	(18.0 FT)	HEALED SINGLE BLAZE
INDT	ROOT HOLE	(S38°W)	(7.3 FT)	ROOT HOLE FOUND, LOG ROTTEN
43"	FIR SNAG	(S10°E)	(25.1 FT)	HEALED DOUBLE BLAZE
INDT	FIR STUMP	(N30°E)	(23.8 FT)	NO MARKS FOUND

( ) = RECORD PER M58-7 AND 54/71

Obj. Ident. \_\_\_\_\_  
Ident. By \_\_\_\_\_  
Signature \_\_\_\_\_

**PLANE COORDINATE POSITION DATA**

State \_\_\_\_\_ Zone \_\_\_\_\_  
North \_\_\_\_\_  
West \_\_\_\_\_  
Estab. By \_\_\_\_\_

**DESCRIBE CORNER LOCATION RELATIVE TO NEAR-BY FEATURES, ALSO HOW TO REACH CORNER**

CORNER FALLS AT TOE OF STEEP EAST SLOPE, ON NEARLY LEVEL BENCH. TO ACCESS CORNER TAKE TAKE 1610-500 ROAD TO 1610-540 SPUR, PARK AND WALK SOUTHEAST 700 FEET +/- TO CORNER OR SOUTH TO POSTED LINE THEN EAST TO CORNER.

Signature \_\_\_\_\_ Title \_\_\_\_\_ Division \_\_\_\_\_ Headquarters \_\_\_\_\_

**CORNER RECORD (PERPETUATION)**

**MONUMENT : DESCRIBE NEW MONUMENT SET, OR WORK DONE TO PRESERVE EXISTING MONUMENT**

BRUSH CLEARED AROUND MONUMENT AND TO BT'S  
"LAND LINE" FLAGGING TIED ON MONUMENT AND GUARD POSTS

REGISTERED PROFESSIONAL LAND SURVEYOR

*John Ransom*

OREGON  
JULY 21, 1992  
JOHN C. RANSOM  
2561

**ACCESSORIES : DESCRIBE NEW BT's WITNESS OBJECTS ETC. ESTABLISHED, OR WORK DONE TO PRESERVE EXISTING EVIDENCE**

MARKED: A 10" FIR BEARS S63°W - 17.3 FEET, SCRIBED "T31S R1W S34""BT" ON DOUBLE BLAZE WITH 3/4" BRASS WASHER MARKED "LS2561" NAILED BETWEEN B&T IN LOWER BLAZE

NEW NAILS IN BT TAGS AND PAINTED FACES & 6 INCH BAND AT HEAD HEIGHT

DONE BY: Jonathan Drew TITLE LSIT DATE 1/15/2014 PLS NO./AGENCY/STATE JOHN RANSOM, PLS2561

Certified Cor. Record Prepared? YES Filed At: DOUGLAS CO. DATE \_\_\_\_\_

**REMARKS**

PROPERTY LINE MAINTINED WEST 4393 FT +/-

BEARINGS TO FOUND ACCESSORIES CHECKED WELL WITH HAND COMPASS, BEARING TO NEW TREE BY HAND COMPASS. DISTANCES TO FOUND ACCESSORIES IS RECORD, DISTANCE TO NEW TREE BY STEEL TAPE

Index File No V-17 T. 31 S R. 1 W M. WM Proj No. ELK Cor. SECTION

C.S. File No 65/85-23