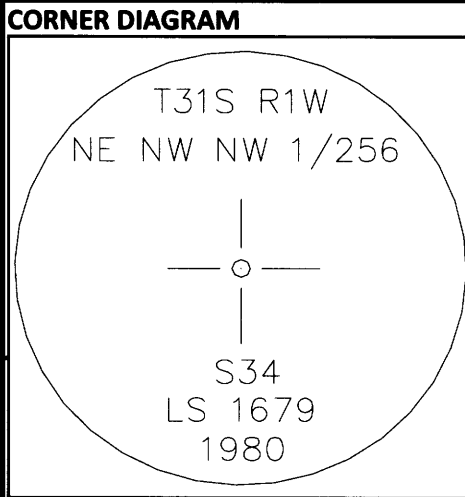


USDA-FOREST SERVICE

Index

CORNER RECORD (SEARCH)

File No. V.25-13.75 PROJ. NO. ELK CORNER 1/256
TOWNS. 31 S RANGE 1 W R.D. TILLER COUNTY DOUGLAS GCDB# 415175
MERID. WM FOREST UMPQUA STATE OREGON NE-NW-NW 1/256 S34



DESCRIBE CORNER MONUMENT FOUND
FOUND 2-1/2" BRASS CAP ON 2-1/4" IRON PIPE, PROJECTING 5 INCHES ABOVE GROUND

DESCRIBE BEARING TREES OR OTHER OFFICIAL ACCESSORIES FOUND
DIA TYPE BEARS DIST FACE/MARKINGS
19" B.OAK (S14°07'E) (45.2 FT) HEALED DOUBLE BLAZE
23" W.FIR (N37°57'W) (29.3 FT) HEALED DOUBLE BLAZE
() = RECORD PER M83-4

Ident. By

Signature
PLANE COORDINATE POSITION DATA
State Zone
North
West
Estab. By

DESCRIBE CORNER LOCATION RELATIVE TO NEAR-BY FEATURES, ALSO HOW TO REACH CORNER
CORNER FALLS ON LEVEL GROUND, JUST NORTH OF A PRIVATE ROAD. FROM 1610-370 AND 1610-378 INTERSECTION, WALK WEST ON 378 ROAD TO A TIMBER MANAGEMENT LINE WHERE A THINNED PINES REPROD STAND EXISITS, GO NORTH AT EAST THINNING UNIT EDGE TO CORNER 330' NORTH OF THIS CORNER, FOLLOW POSTED LINE 330'+/- SOUTH TO CORNER

Signature Title Division Headquarters Date 7100-52 (3/68)

CORNER RECORD (PERPETUATION)

MONUMENT : DESCRIBE NEW MONUMENT SET, OR WORK DONE TO PRESERVE EXISTING MONUMENT
BRUSH CLEARED AROUND MONUMENT AND TO BT'S
"LAND LINE" FLAGGING TIED ON MONUMENT AND GUARD POSTS
REGISTERED PROFESSIONAL LAND SURVEYOR
John Ransom
OREGON JULY 21, 1992 JOHN C. RANSOM 2561

ACCESSORIES : DESCRIBE NEW BT'S WITNESS OBJECTS ETC. ESTABLISHED, OR WORK DONE TO PRESERVE EXISTING EVIDENCE
NO NEW ACCESSORIES ADDED
NEW NAILS IN BT TAGS AND PAINTED FACES & 6 INCH BAND AT HEAD HEIGHT

DONE BY: Jonathan Drew TITLE LSIT DATE 12/17/2013 PLS NO./AGENCY/STATE JOHN RANSOM, PLS2561
Certified Cor. Record Prepared? NO Filed At: DATE

REMARKS
PROPERTY LINE MAINTINED WEST 1016 FT +/- AND NORTH 330 FT +/-

Index File No V.25-13 T. 31 S R. 1 W M. WM Proj No. ELK Cor. 1/256

C.S. File No 65/85-19