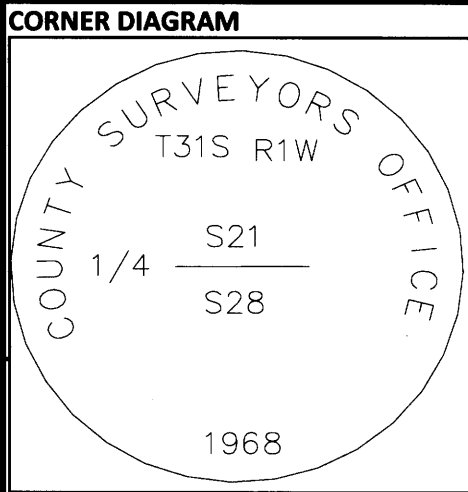


Index

CORNER RECORD (SEARCH)

File No. R-11 PROJ. NO. ELK CORNER 1/4
TOWNS. 31 S RANGE 1 W R.D. TILLER COUNTY DOUGLAS GCDB# 340300
MERID. WM FOREST UMPQUA STATE OREGON



DESCRIBE CORNER MONUMENT FOUND
FOUND 2-1/2" DCSO BRASS CAP ON 1-1/4" IRON PIPE, PROJECTING 18 INCHES ABOVE A MOUND OF STONE.

DESCRIBE BEARING TREES OR OTHER OFFICIAL ACCESSORIES FOUND
DIA TYPE BEARS DIST FACE/MARKINGS
13" FIR (WEST) (11.3 FT) HEALED DOUBLE BLAZE
14" FIR (N20W) (9.0 FT) HEALED DOUBLE BLAZE
( ) = RECORD PER 1985 CORNER CARD BY: L. MOFFIT

Obj. Ident.
Ident. By
Signature

DESCRIBE CORNER LOCATION RELATIVE TO NEAR-BY FEATURES, ALSO HOW TO REACH CORNER
CORNER FALLS ON LEVEL GROUND ABOUT 150 FEET NORTH OF A CREEK TO ACCESS CORNER FOLLOW 1610-370 ROAD TO LINE CROSSING IN CENTER OF SECTION 28, FOLLOW POSTED/BLAZED LINE NORTH 2000 FEET +/- TO CORNER.

PLANE COORDINATE POSITION DATA
State Zone
North
West
Estab. By

Signature Title Division Headquarters Date 7100-52 (3/68)

CORNER RECORD (PERPETUATION)

MONUMENT : DESCRIBE NEW MONUMENT SET, OR WORK DONE TO PRESERVE EXISTING MONUMENT
BRUSH CLEARED AROUND MONUMENT AND TO BT'S
"LAND LINE" FLAGGING TIED ON MONUMENT AND GUARD POSTS
REGISTERED PROFESSIONAL LAND SURVEYOR
John Ransom
OREGON JULY 21, 1982 JOHN C. RANSOM 2561

ACCESSORIES : DESCRIBE NEW BT'S WITNESS OBJECTS ETC. ESTABLISHED, OR WORK DONE TO PRESERVE EXISTING EVIDENCE
NO NEW ACCESSORIES ADDED
NEW NAILS IN BT TAGS AND PAINTED FACES & 6 INCH BAND AT HEAD HEIGHT

DONE BY: Jonathan Drew TITLE LSIT DATE 11/25/2013 PLS NO./AGENCY/STATE JOHN RANSOM, PLS2561
Certified Cor. Record Prepared? NO Filed At: DATE

REMARKS
PROPERTY LINE MAINTINED SOUTH .5 MILES AND NORTH .5 MILES

Index File No R-11 T. 31 S R. 1 W M. WM Proj No. ELK Cor. 1/4