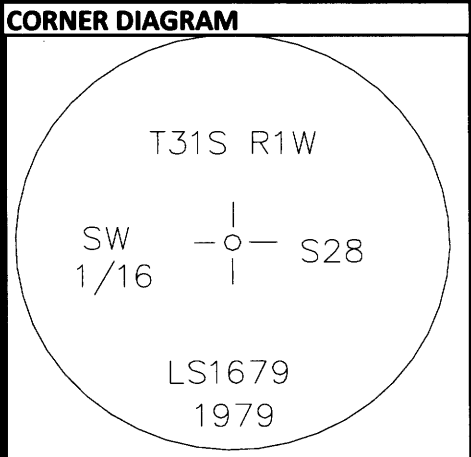


Index

CORNER RECORD (SEARCH)

File No. U-10 PROJ. NO. ELK CORNER SW 1/16
 TOWNS. 31 S RANGE 1 W R.D. TILLER COUNTY DOUGLAS GCDB# 320220
 MERID. W.M. FOREST UMPQUA STATE OREGON



DESCRIBE CORNER MONUMENT FOUND
 FOUND 2-1/2" BRASS CAP ON 2-1/4" IRON PIPE, PROJECTING 5 INCHES ABOVE THE GROUND

DESCRIBE BEARING TREES OR OTHER OFFICIAL ACCESSORIES FOUND

DIA	TYPE	BEARS	DIST	FACE/MARKINGS
13"	L.OAK	S36°30'E	13.8 FT	HEALED SINGLE BLAZE
22"	ROOT HOLE	S83°15'W	23.0 FT	MAPLE WINDFALL LOG, PARTIALLY HEALED DOUBLE BLAZE

Obj. Ident. _____
 Ident. By _____
 Signature _____

DESCRIBE CORNER LOCATION RELATIVE TO NEAR-BY FEATURES, ALSO HOW TO REACH CORNER
 CORNER FALLS ABOUT 200 FEET EAST OF A PRIVATE ROAD, AND 200 FEET +/- SOUTH OF THE SAME ROAD, TO ACCESS TAKE COUNTY ROAD 1A 3/4 MILE TO A PULL OUT JUST PAST BRIDGE, OPPOSITE PULL OUT IS A GATED ROAD CROSS FENCE ON FOOT, FOLLOW PRIVATE ROAD OVER 1 MILE TO POSTED LINE EAST TO CORNER, OR GO TO CORNER T-10, THENCE SOUTH 1/4 MILE.

PLANE COORDINATE POSITION DATA
 State _____ Zone _____
 North _____
 West _____
 Estab. By _____

Signature _____ Title _____ Division _____ Headquarters _____

CORNER RECORD (PERPETUATION)

MONUMENT : DESCRIBE NEW MONUMENT SET, OR WORK DONE TO PRESERVE EXISTING MONUMENT
 BRUSH CLEARED AROUND MONUMENT AND TO BT'S
 "LAND LINE" FLAGGING TIED ON MONUMENT AND GUARD POSTS

REGISTERED PROFESSIONAL LAND SURVEYOR
John Ransom
 OREGON
 JULY 21, 1992
 JOHN C. RANSOM
 2561

ACCESSORIES : DESCRIBE NEW BT'S WITNESS OBJECTS ETC. ESTABLISHED, OR WORK DONE TO PRESERVE EXISTING EVIDENCE
 MARKED: A 14" FIR BEARS, S56°W - 22.0 FT, SCRIBED "SW1/16S28" "BT" ON A DOUBLE BLAZE, WITH BRASS WASHER MARKED "LS2561" BETWEEN B&T IN LOWER BLAZE.
 RED PAINT APPLIED TO BT FACES AND A 6" BAND AT HEAD HEIGHT, BT'S INCLUDE BT & SURVEY MONUMENT TAGS

DONE BY: Jonathan Drew TITLE LSIT DATE 1/16/2014 PLS NO./AGENCY/STATE _____
 Certified Cor. Record Prepared? YES Filed At: DOUGLAS CO. DATE _____

REMARKS
 MEASUREMENTS TO ACCESSORIES MADE WITH A LEICA 1103+ TOTAL STATION WITH REFLECTORLESS EDM TO ALUMINUM NAIL SET AT SIDE CENTER, BASIS OF BEARING FROM M81-59, BEING N89°31'08"W AS SET USING A PROPERTY LINE POST FOUND 160 FT WEST OF CORNER.
 MAINTAINED PROPERTY LINE NORTH .25 AND WEST .25 MILES

Index File No U-10 T. 31 S R. 1 W M. W.M. Proj No. ELK Cor. SW 1/16