

USDA-FOREST SERVICE 970 340-117

Index File No. W-8.25

T 315 R 1W

Merid. Willamette

CORNER RECORD (SEARCH)

(Ref. FSM 7151.4)

R.D. TILLER

N.F. UMPQUA

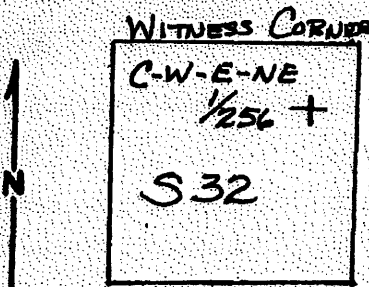
County DOUGLAS

State OREGON

Tract or Survey No.

Co DOUGLAS COUNTY No. SURVEYOR

CORNER DIAGRAM



DESCRIBE CORNER MONUMENT FOUND

A 2 1/2" IRON PIPE, FIRMLY SET PROJECTING 7" ABOVE THE GROUND WITH A 2 1/2" BRASS CAP:

T315 R1W  
S32  
C-W-E-NE 1/256  
WITNESS CORNER  
LS1679  
1079

DESCRIBE BEARING TREES OR OTHER OFFICIAL ACCESSORIES FOUND

- A 12" G. FIR BEARS S. 23° 04' E, 12.5 FT. WITH ILLEGIBLE SCRIBE MARKS VISIBLE (REC. 12.7 FT.)
- A 14" CEDAR BEARS N41° 56' E, 18.5 FT. WITH SCRIBE MARKS C-W-E-NE 1/256 VISIBLE (REC. 19.1 FT.)
- A 5/8" IRON ROD BEARS EAST, 3.0 FT WITH A PASTIL CAP "LS1679" - True Corner Point

DESCRIBE CORNER LOCATION RELATIVE TO NEAR-BY FEATURES, ALSO HOW TO REACH CORNER

FOLLOW COUNTY ROAD 1-A TO BRIDGE OVER CREEK THEN GO EAST ON A WASHED OUT DIRT ROAD TO NE 1/4 THEN FOLLOW POSTED LINE EAST, 330' TO CORNER.

PHOTO IDENTIFICATION DATA

Photo No. \_\_\_\_\_  
Filed At. \_\_\_\_\_  
Object Ident. \_\_\_\_\_  
Ident. By \_\_\_\_\_  
Signature \_\_\_\_\_

PLANE COORDINATE POSITION DATA

State \_\_\_\_\_ Zone \_\_\_\_\_  
X \_\_\_\_\_  
Y \_\_\_\_\_  
Etab. By \_\_\_\_\_  
Agency \_\_\_\_\_

Signature: *Justin O. DeGroot* Title: PLS Division: \_\_\_\_\_ Headquarters: \_\_\_\_\_ Date: 5/02 7100-52-13.681

C.S. FILE NO 65/85-6

CORNER RECORD (PERPETUATION)

MONUMENT. DESCRIBE NEW MONUMENT SET, OR WORK DONE TO PRESERVE EXISTING MONUMENT

ACCESSORIES. DESCRIBE NEW BT'S, WITNESS OBJECTS ETC. ESTABLISHED, OR WORK DONE TO PRESERVE EXISTING EVIDENCE

PAINTED A 6" RED BAND : BT FACES RED  
NAILED 54-3 : 54-9 SIGNS TO BT'S

Work Done By: *R. De Groot* Title: PLS Date: 5/02 State Registration No. PLS 1041

Certified Cor. Record Prepared? Yes  Filed At: \_\_\_\_\_ Date: \_\_\_\_\_

WITNESSES: L. FANNING  
R. WESCOTT

REMARKS