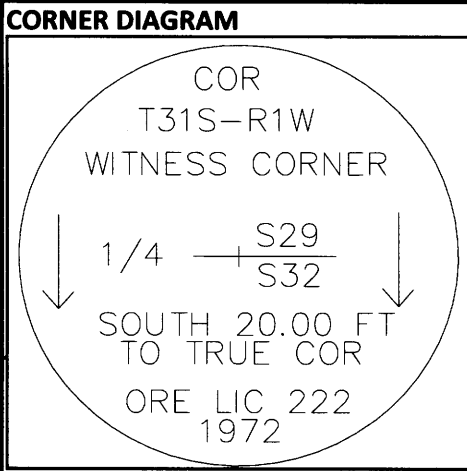


USDA-FOREST SERVICE

Index

CORNER RECORD (SEARCH)

File No. V-7 PROJ. NO. ELK CORNER 1/4 WC
 TOWNS. 31 S RANGE 1 W R.D. TILLER COUNTY DOUGLAS GCDB# 240200
 MERID. WM FOREST UMPQUA STATE OREGON



DESCRIBE CORNER MONUMENT FOUND
 FOUND 3" BRASS CAP ON 2-1/2" IRON PIPE, PROJECTING 5 INCHES ABOVE A LARGE MOUND OF STONE. CAP AND PIPE ARE SLANTED HEAVILY NORTH, NO CLEAR SIGN OF WHAT MAY HAVE CAUSED THIS.

DESCRIBE BEARING TREES OR OTHER OFFICIAL ACCESSORIES FOUND

DIA	TYPE	BEARS	DIST	FACE/MARKINGS
20"	D.FIR	(N35°56'E)	(82.1 FT)	HEALED SINGLE BLAZE
(13")	W.FIR	(S24°21'W)	(179.3 FT)	TREE NOT VISITED, CAN BE SEEN FROM CORNER AND LIES ON TOP OF QUARRY CUT, TREE IS HEALTHY.

() = RECORD PER M81-58

Obj. Ident. _____
 Ident. By _____
 Signature _____

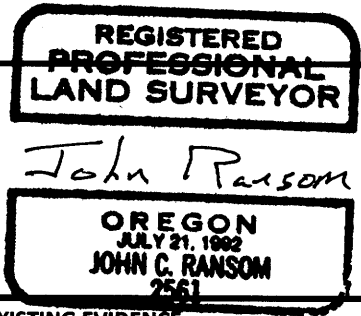
PLANE COORDINATE POSITION DATA
 State _____ Zone _____
 North _____
 West _____
 Estab. By _____

DESCRIBE CORNER LOCATION RELATIVE TO NEAR-BY FEATURES, ALSO HOW TO REACH CORNER
 WITNESS CORNER FALLS ON TOP OF QUARRY CUT, TRUE CORNER FALLS IN QUARRY, POSTED LINE ENDS ABOUT 120 FT EAST OF TRUE CORNER. FROM 4X4 POST AT HIGHWAY, GO WEST ON POSTED/BLAZED LINE TO PROPERTY POST AT TOP OF QUARRY, FOLLOW QUARRY TOP WESTERLY TO FIND WITNESS CORNER.

Signature _____ Title _____ Division _____ Headquarters _____ Date 7100-52 (3/68)

CORNER RECORD (PERPETUATION)

MONUMENT : DESCRIBE NEW MONUMENT SET, OR WORK DONE TO PRESERVE EXISTING MONUMENT
 BRUSH CLEARED AROUND MONUMENT AND TO BT'S
 "LAND LINE" FLAGGING TIED ON MONUMENT AND GUARD POSTS



ACCESSORIES : DESCRIBE NEW BT'S WITNESS OBJECTS ETC. ESTABLISHED, OR WORK DONE TO PRESERVE EXISTING EVIDENCE
 NO NEW ACCESSORIES ADDED
 NEW NAILS IN BT TAGS AND PAINTED FACES & 6 INCH BAND AT HEAD HEIGHT

DONE BY: Jonathan Drew TITLE LSIT DATE 1/8/2014 PLS NO./AGENCY/STATE JOHN RANSOM, PLS2561
 Certified Cor. Record Prepared? NO Filed At: _____ DATE _____

REMARKS
 PROPERTY LINE MAINTINED EAST 600 FT +/- TO ELK CREEK THIS DATE.

Index File No V-7 T. 31 S R. 1 W M. WM Proj No. ELK Cor. 1/4 WC

C.S. File No 65/85-3