

LANE COUNTY SURVEYORS OFFICE  
DEPARTMENT OF PUBLIC WORKS

INDEX NO. **12267**

PAGE 1 OF 2  
FILE NO: 19-09-12 SE

**CORNER REPORT**

THE SOUTHEAST CORNER OF SECTION 12, AND THE NORTHEAST CORNER OF SECTION 13, TOWNSHIP 19 SOUTH, RANGE 9 WEST, WILLAMETTE MERIDIAN.

G.L.O. NOTES DATED: 1895 BY: H. CHANDLER (GLO VOL. R391 P.532)

CORNER: SET 15x12x6 BASALT STONE WITH GROOVES, 10" IN THE GROUND.

**ACCESSORIES:**

- 1895 [1] 14" FIR BEARS N 29°W @ 44 LINKS (29.04'), MARKED "T19S R9W S12 BT".  
1895 [2] 6" FIR BEARS S 16°W @ 30 LINKS (19.80'), MARKED "T19S R9W S13 BT".

REESTABLISHMENT NOTES DATED: 1957 BY: T. TILLMAN (BLM VOL. R573 P.10)

EVIDENCE RECOVERED: NONE.

NOTE: FOUND 40" FIR, BEARS N 75°W @ 14 LINKS (9.24'), WITH HEALED BLAZES ON N., S., AND E. SIDES, "MORE RECENT THAN THE COLLIER OR CHANDLER SURVEYS".

MONUMENT SET: AT PROPORTIONED DISTANCE SET 2" DIAM. IRON POST, 36" LONG AND 28" IN THE GROUND, WITH BRASS CAP.

**ACCESSORIES ESTABLISHED:**

- 1957 [3] 14" HEMLOCK BEARS N 2°W @ 36 LINKS (23.76'), MARKED "T19S R9W S12 CCBT".  
1957 [4] 23" HEMLOCK BEARS S 49 1/2°W @ 125 LINKS (82.50'), MARKED "T19S R9W S12 CCBT".

**CORNER EVIDENCE**

EVIDENCE RECOVERED: FOUND 2" I.P. WITH A GLO BRASS CAP PROJECTING 4" ABOVE A 1 1/2' DIAMETER MOUND OF STONE. WITNESS POST IS 1 1/2' TO NORTH.

1957 [3] IS A HEMLOCK BLOWDOWN WHICH HAS BEEN MOVED OUT OF ITS ORIGINAL POSITION BY HEAVY EQUIPMENT. DID NOT MEASURE OR REFERENCE.

1957 [4] A 29" HEMLOCK BEARS S 49°49'W @ 80.64' (REC.= S 49 1/2°W @ 82.50'), WITH ILLEGIBLE SCRIBE MARKS ON PARTIALLY-HEALED BLAZE. SET BLUE MAGNETIC MARKER ON LINE AND 71.7' FROM CORNER.

1957 [5] 38" CAPPED FIR STUMP BEARS N 75°47'W @ 9.10' (REC.= N 75°W @ 9.24') TO NAIL AT CENTER, WITH BLAZES ON N,S, AND E SIDES. SET ORANGE MAGNETIC MARKER ON LINE AND 14.1' FROM THE CORNER.

MONUMENT SET: NONE.

**ACCESSORIES ESTABLISHED:**

- 1993 [6] 7" FIR BEARS N 29°24'E @ 25.58', MARKED "CSBT". SET SILVER MAGNETIC MARKER ON LINE AND 35.6' FROM THE CORNER.  
1993 [7] 6" FIR BEARS S 87°43'E @ 23.74', MARKED "CSBT". SET PINK MAGNETIC MARKER ON LINE AND 33.7' FROM THE CORNER.

NOTES AND OTHER INFORMATION:

EQUIPMENT USED: WILD TC 1000 TOTAL STATION, TDS 48SX DATA COLLECTOR.

BASIS OF BEARING: 1957 BLM SURVEY.

MAGNETIC DECLINATION: 18°E.

DISTANCES TO BEARING TREES ARE MEASURED TO A NAIL AT SIDE AND CENTER OF TREE.

DATE: FEB. 11, 1993

BY: BOB THURMAN, PLS, ET II *B.T.*

PRESENT: JON TESDELL, ET I *J.T.*

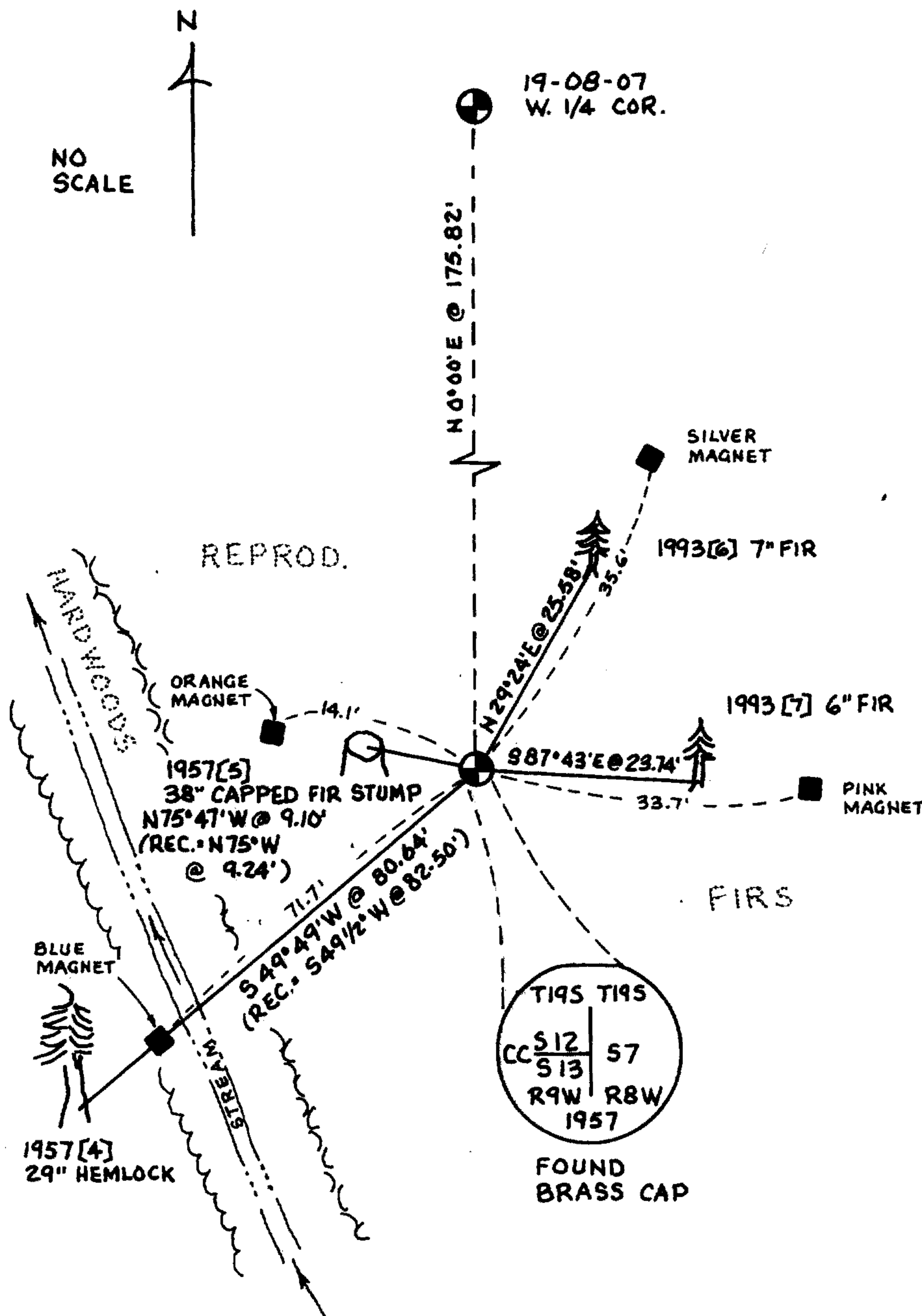
SECTION DIAGRAM GRID

T19S	T19S
S 12	
	X S 7
S 13	
R9W	R8W

REGISTERED  
PROFESSIONAL  
LAND SURVEYOR

*K. Robert Ezell*  
EX 12/93

OREGON  
JULY 16, 1971  
KENNETH ROBERT EZELL  
952



T19S	T19S
CC S12	S7
S13	
R9W	R8W
1957	

FOUND  
BRASS CAP

FILED

Date: 3/27/2014 By: JC

This survey consists of:

Map: \_\_\_\_\_

Narrative: \_\_\_\_\_

Corner Rpt: CS 65/82-26

DOUGLAS COUNTY  
SURVEYOR