

Date: 1-9-2014 By: JC

This survey consists of:

Map: \_\_\_\_\_

Narrative: \_\_\_\_\_

Corner Rpt: CS 65/82-6

### OREGON CORNER RESTORATION FORM

Section 4 Township 31S Range 4W

DOUGLAS COUNTY  
SURVEYOR

County Douglas Date 12-31-2013

Corner Designation 1/4 COR  
S4  
S9

- Condition Report Only
- Not Found
- Renewed
- Unrecorded
- Surveyed In
- Referenced out

#### Previous Renewals / Surveys, etc.

Original by Bushey in 1893. Proportioned by Markham in 1951. Markham's corner was re-monumented by County in 1976. BLM rejected this position and set a 1985 BLM cap by proportionate measurement. Used by Mark Smalley in 2001. Fd. OK by J. Estabrook in 2003.

#### Monument (s) & Accessories Found: (Condition & Source)

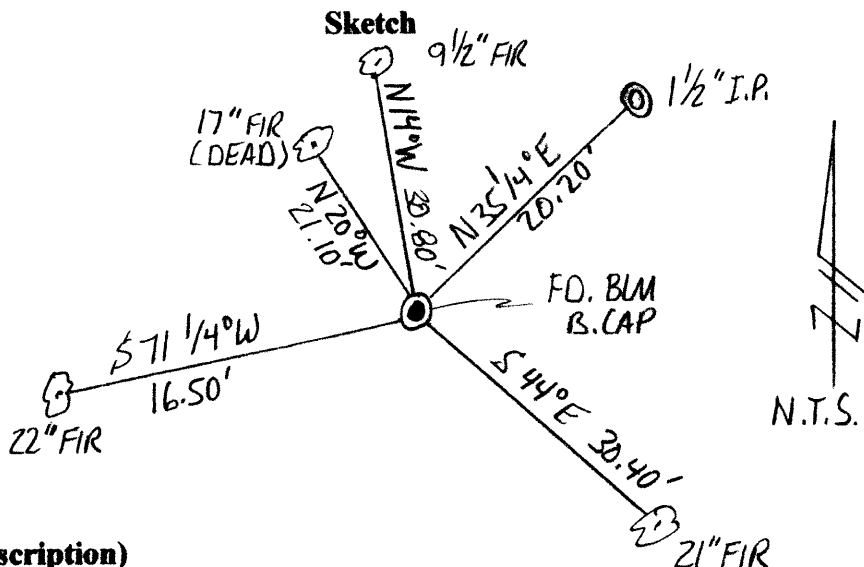
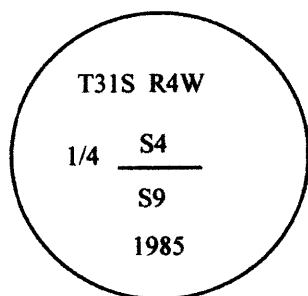
Found 1985 BLM brass cap set by proportion in 1985.

Found 21" Fir bears S44°E 30.40' (record S44°E 30.40')

Found 17" Fir (dead) bears N20°W 21.10' (record N20 3/4°W 21.10')

Found 1 1/2" IP bears N35 1/4°E 20.20' (County's brass cap has apparently been sawn off leaving only this pipe).

#### Monument Detail



#### Monument Set (Procedures & Description)

N/A

#### New Accessories

New BT's

A 22" fir bears S71 1/4°W 16.50' scribed "1/4 S9 BT"

A 9 1/2" fir bears N14°W 30.80' scribed "1/4 S4 BT"

NOTE: Bearings are to the center of the trees and distances are measured to a spike in the side of the trees.

#### Location & Comments:

Corner lies on a steep East slope about 180' below and East of gravel road.

Compass Declination N/A

#### Firm/Agency

Gregory D. Lang, Surveyor  
7550 Willis Creek Rd.  
Winston, Or 97496

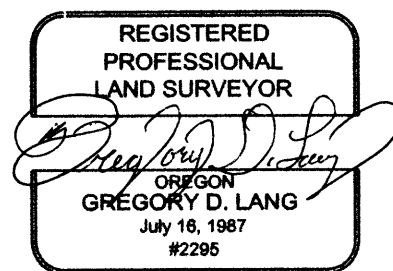
#### Party Chief and Notes

Gregory Lang

#### Witness

Trevor Lang

#### Surveyor's Seal



C.S. File No 65/82-6