

# CORNER RECORD (SEARCH)

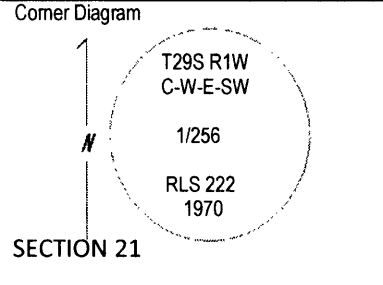
Index File No. Q-10.1

Tract or Survey No. SECTION 21

Cor. No.

T 29S R 1W R.D. TILLER County DOUGLAS

Merid. Willamette N.F. UMPQUA State OR



DESCRIBE CORNER MONUMENT FOUND

A2 1/2 INCH BRASS CAP ON A 2 1/2 INCH IRON PIPE BENT OVER AND OUT OF GROUND

DESCRIBE BEARING TREES OR OTHER OFFICIAL ACCESSORIES FOUND

A 21 IN. FIR BRS. S 88 1/2° E 20.6 FT. DIST WITH A HDB

A 20 IN. FIR BRS. S 21 1/2° W 13.3 FT. DIST. WITH A HDB

PHOTO I.D. DATA

Photo No. \_\_\_\_\_

Filed At \_\_\_\_\_

Object Ident \_\_\_\_\_

Ident By \_\_\_\_\_

Signature \_\_\_\_\_

DESCRIBE CORNR LOCATION RELATIVE TO NEAR-BY FEATURES, ALSO HOW TO REACH CORNER

CORNER LIES ON A STEEP WEST SLOPE APROXIMATLY 850 FT. WEST OF ROAD 2827-013

PLANE COORDINATE POSITION DATA

State \_\_\_\_\_ Zone \_\_\_\_\_

X \_\_\_\_\_

Y \_\_\_\_\_

Estab. By \_\_\_\_\_

Agency \_\_\_\_\_

Signature <u>LANCE GOUCHER</u>	Title <u>Survey Tech.</u>	Division	Headquarters <u>Medford</u>	Date <u>6/ 2012</u>	FS-7100-52 (3/68)
-----------------------------------	------------------------------	----------	--------------------------------	------------------------	-------------------

## CORNER RECORD (PERPETUATION)

MONUMENT: DESCRIBE NEW MONUMENT SET, OR WORK DONE TO PRESERVE EXISTING MONUMENT

RE-SET THE MONUMENT USING A DISTANCE/ DISTANCE INTERSECTION FROM THE BEARING TREES. MONUMENT NOW PROJECTS 9 INCHES IN A MOUND OF STONE

ACCESSORIES: DESCRIBE NEW BT'S, WITNESS OBJECTS, ETC. ESTABLISHED, OR WORK DONE TO PRESERVE EXISTING EVIDENCE

**FILED**

Date: 11-18-2013 By: JC

This survey consists of:

Map \_\_\_\_\_

Watermark \_\_\_\_\_

Corner Rpt. CS 65/80-47

**DOUGLAS COUNTY SURVEYOR**

REGISTERED PROFESSIONAL LAND SURVEYOR

*John Ransom*

OREGON  
JULY 21, 1992  
JOHN C. RANSOM  
2561

**C.S. File No** 65/80-47