

FILED

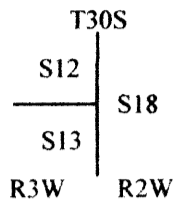
OREGON CORNER RESTORATION FORM

Date: 8-12-2013 By: [Signature]
This survey consists of:
Map: CS 65/79-124
Narrative:
Corner Rpt. CS 65/79-12

Section 12 Township 30S Range 3W
County Douglas Date 7-29-2013

DOUGLAS COUNTY SURVEYOR B-G

Corner Designation



- Condition Report Only
Not Found
Renewed
Unrecorded
Surveyed In
Referenced out

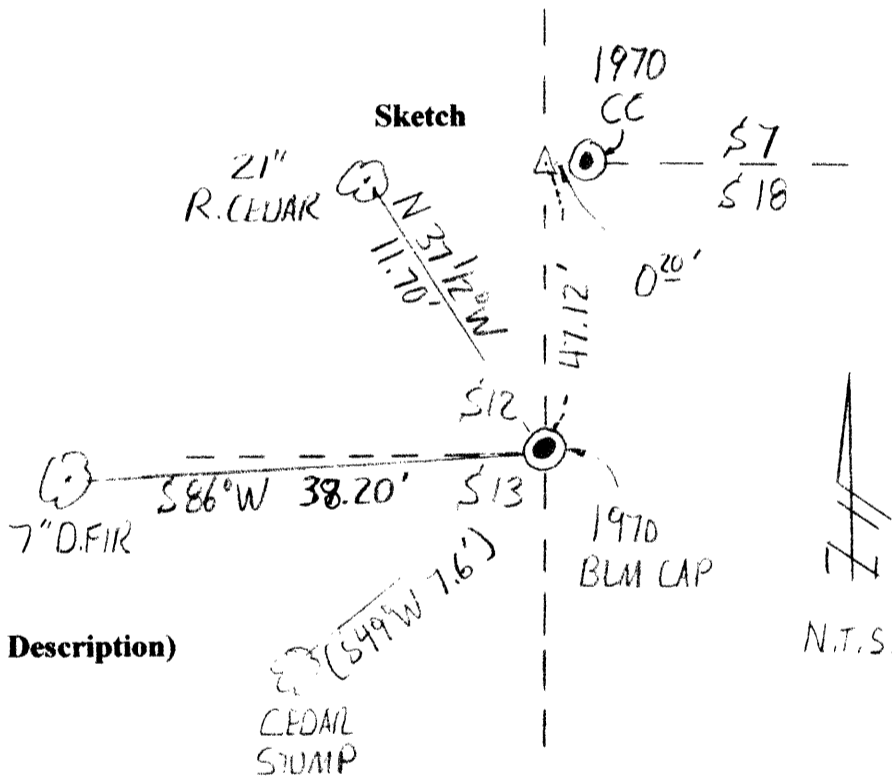
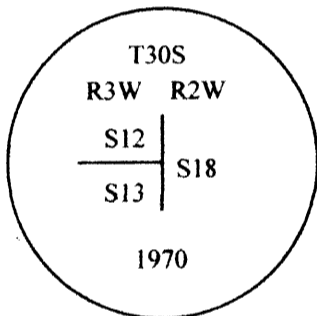
Previous Renewals / Surveys, etc.

Corner of 7,12,13,& 18 by Bushey in 1893. Re-established as Corner of 12 & 13 only in 1908 by Fred Mensch. Perpetuated by County in 1963. BLM set a B.Cap in 1970. Found by Geisler in 1986.

Monument (s) & Accessories Found: (Condition & Source)

Found 1970 BLM Brass cap.
Found Cedar stump (S49°W 17.6') per 1963 Renewal; other BT's are down.

Monument Detail



Monument Set (Procedures & Description)

N/A

New Accessories

New BT's
7" D. Fir bears S86°W 38.20' scribed "T30S R3W S13 BT"
21" Red Cedar bears N37 1/2°W 11.70' scribed "T30S R3W S12 BT"

NOTE: Bearings are to the center of the trees and distances are measured to a spike in the side of the trees.

Location & Comments:

Corner lies near a creek bottom between two large down trees.

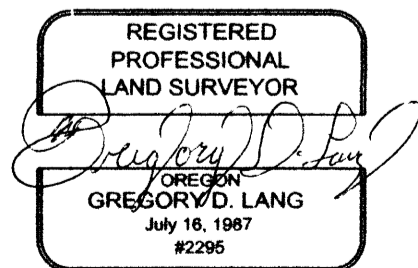
Compass Declination N/A

Firm/Agency
Gregory D. Lang, Surveyor
7550 Willis Creek Rd.
Winston, Or 97496

Party Chief and Notes
Gregory Lang

Witness
Trevor Lang

Surveyor's Seal



EXPIRES: 12-31-2014

C.S. File No 65/79-126