

FILED

Date: 8-12-2013 By: SC
This survey consists of:
Map: CS 65/79-12A
Narrative: _____
Corner Rpt: CS 65/79-12
6-6

OREGON CORNER RESTORATION FORM

Section 12 Township 30S Range 3W
County Douglas Date 7-30-2013

DOUGLAS COUNTY
SURVEYOR

Corner Designation

1/4 COR
S12 | S7
R3W | R2W

- Condition Report Only
- Not Found
- Renewed
- Unrecorded
- Surveyed In
- Referenced out

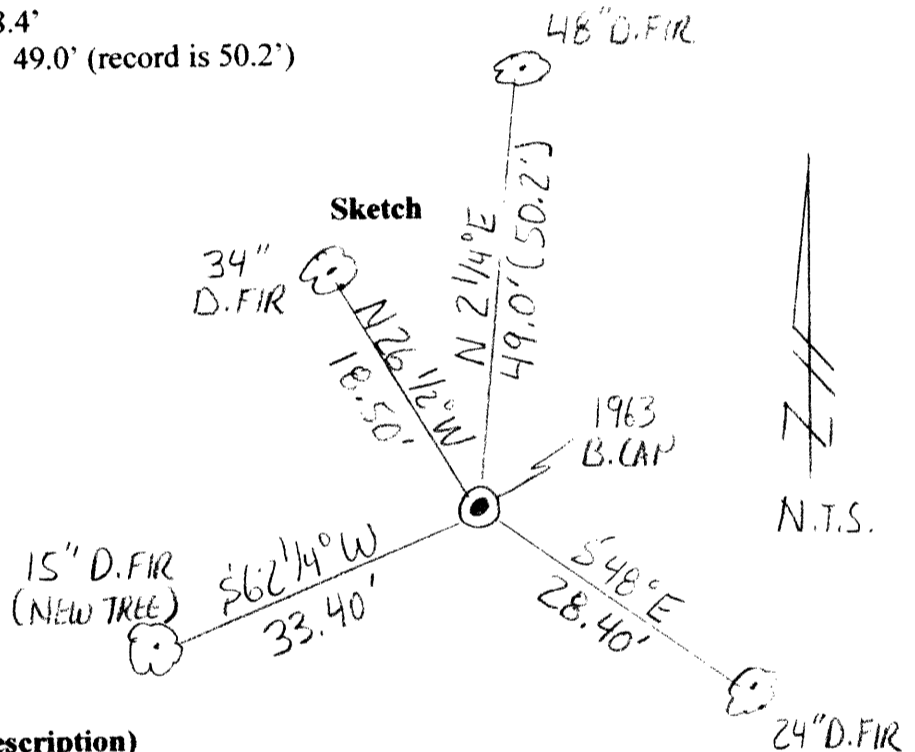
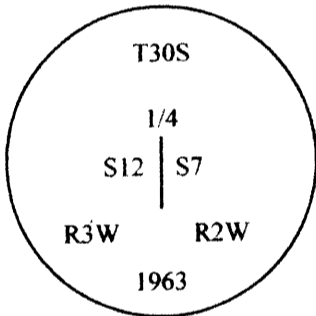
Previous Renewals / Surveys, etc.

Original by Bushey in 1893. Re-established in 1908 by Fred Mensch. Perpetuated by Douglas County in 1963. Found by BLM in 1970.

Monument (s) & Accessories Found: (Condition & Source)

Found 1963 Brass cap set by County Surveyor.
A 34" D. Fir bears N26 1/2°W 18.5'
A 24" D. Fir bears S48°E 28.4'
A 48" D. Fir bears N2 1/4°E 49.0' (record is 50.2')

Monument Detail



Monument Set (Procedures & Description)

N/A

New Accessories

New BT's
15" D. Fir bears S62 1/4°W 33.40' scribed "1/4 S12 BT"

NOTE: Bearings are to the center of the trees and distances are measured to a spike in the side of the trees.

Location & Comments:

Corner lies on a Northeast slope about 75' below existing logging road. Also 80' North of ridge top.

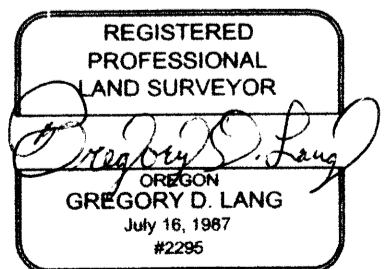
Compass Declination N/A

Firm/Agency
Gregory D. Lang, Surveyor
7550 Willis Creek Rd.
Winston, Or 97496

Party Chief and Notes
Gregory Lang

Witness
Trevor Lang

Surveyor's Seal



EXPIRES: 12-31-2014

C.S. File No 65/79-12 F