

FILED

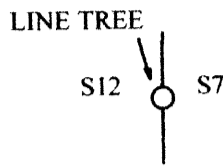
Date: 8-12-2013 By: X  
This survey consists of:  
Map: CS 65/79-12A  
Narrative: \_\_\_\_\_  
Corner Rpt: CS 65/79-12

OREGON CORNER RESTORATION FORM

Section 12 Township 30S Range 3W  
County Douglas Date 7-29-2013

DOUGLAS COUNTY  
SURVEYOR

Corner Designation



- Condition Report Only
- Not Found
- Renewed
- Unrecorded
- Surveyed In
- Referenced out

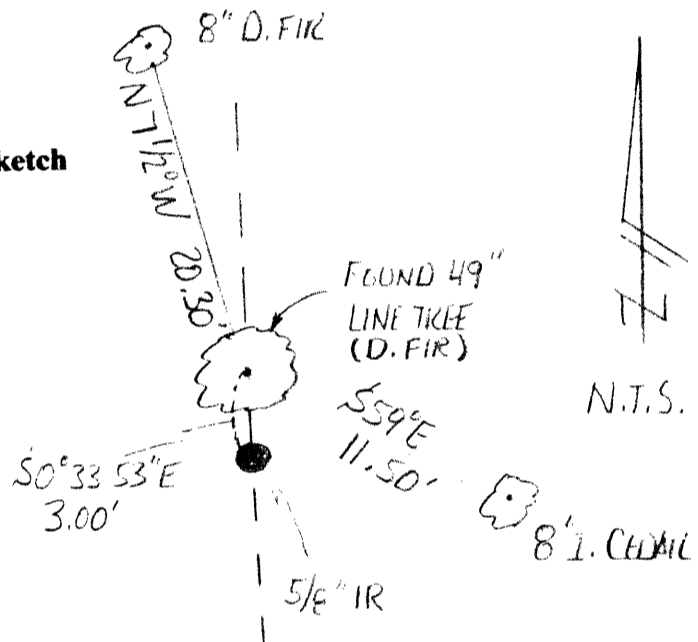
Previous Renewals / Surveys, etc.

Original 40" Fir Line Tree by Bushey in 1893.

Monument (s) & Accessories Found: (Condition & Source)

Found D. Fir line tree (now 49") in proper relative position. Tree has two hack marks on south side.

Sketch



Monument Set (Procedures & Description)

A reference monument set on the Section line bears S0°33'53"E 3.00' from the corner tree. Said monument is a 5/8" x 18" iron rod with plastic cap marked "LANG SURVEYING" and is driven in a large root at the base of the line tree.

New Accessories

New BT's

- 8" D. Fir bears N7 1/2°W 20.30' scribed "LT S12 BT"
- 8" Incense Cedar bears S59°E 11.50' scribed "LT S7 BT"

NOTE: Bearings are to the center of the trees and distances are measured to a spike in the side of the trees.

Location & Comments:

Corner lies in a relatively flat area between two drainages.

Compass Declination N/A

Firm/Agency

Gregory D. Lang, Surveyor  
7550 Willis Creek Rd.  
Winston, Or 97496

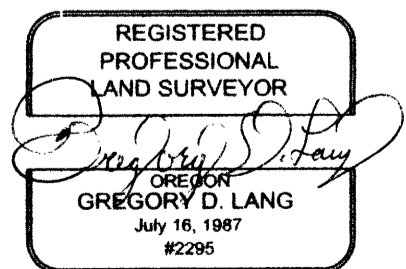
Party Chief and Notes

Gregory Lang

Witness

Trevor Lang

Surveyor's Seal



EXPIRES: 12-31-2014

C.S. File No 65/79-12E