

OREGON CORNER RESTORATION FORM

Section 6 Township 31 S. Range 4W  
 County Douglas Date 2/14/13

FILED  
 Date: 3/13/2013 By: JC  
 This survey consists of:  
 Map: \_\_\_\_\_  
 Narrative: \_\_\_\_\_  
 Corner rpt: 65/78-9

DOUGLAS COUNTY  
 SURVEYOR

Corner Designation

T. 31 S. R. 4 W.

S6	S5
S7	S8

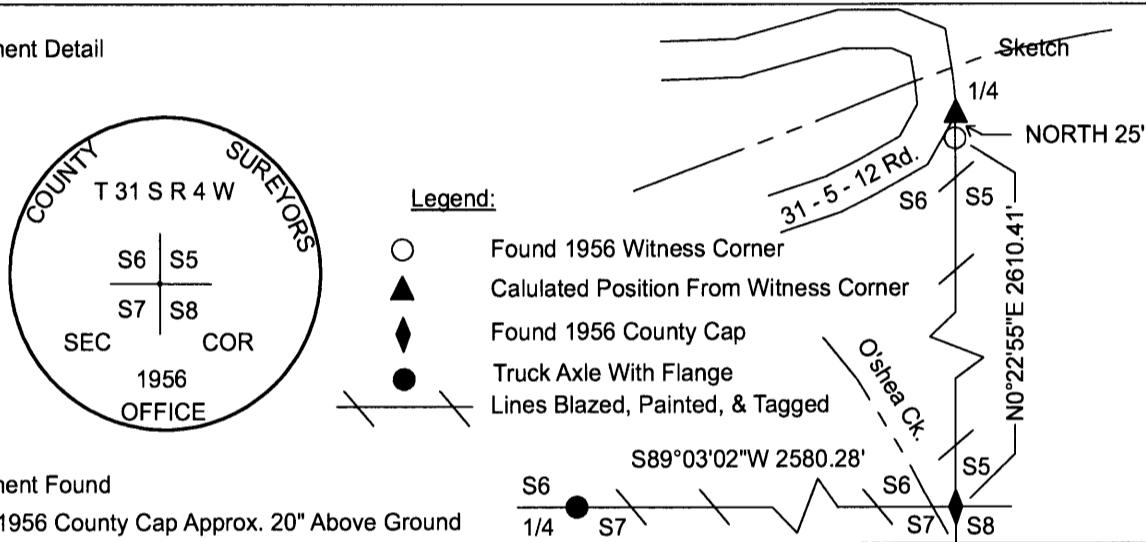
Condition Report Only  
 Not Found  
 Renewed  
 Unrecorded  
 Surveyed In  
 Referenced Out

Previous Renewals/Surveys, etc.  
 Original GLO Field Notes Filed in Douglas County Surveyors Office Vol. 19 Pg. 7869, 1956 Douglas County Surveyor  
 Perpetuated The Section Corner From Original BT C. S. File 47/89, Edwards Map C.S. 65/55-7

Accessories Found: (Condition and Source)

12" Douglas Fir Bears N62 1/4°W 31.5 Ft. (Record From CS 65/55-7 N61°W 31.8 Ft.) Healed Face And Tag  
 14" Maple Bears S4°E 12.3 Ft. (Record From C.S. 65/55-7 S6°E 12.2 Ft.) Visible Scribing And Tag  
 Metal Fence Posts Bear Approx. 5 Ft. West & 2 Ft. South of Corner

Monument Detail



Monument Found  
 Found 1956 County Cap Approx. 20" Above Ground

New Accessories

Location & Comments

Lone Rock Timber ran a random traverse along the section lines from the east 1/4 to the southeast section corner to the south 1/4 corner to the southwest section corner of section 6, to mark property lines for timber management purposes. We also ran a GPS survey for survey control at points on our conventional traverse to check our closure. We marked property lines with flagging, blazing, painting, and aluminum boundary tags. Found 1956 Douglas County Cap approx. 60 ft. east of O'shea creek. 2013 BLM precommercial thinning to the northeast of section corner.

Bearing Basis Bearing is From GPS Observation  
 Firm/Agency Lone Rock Timber Co.  
 Address P. O. Box 1127  
Roseburg, Ore. 97470  
 Party Chief Ken W. Hoffine  
 Notes G. Angiolet  
 Witness G. Angiolet

REGISTERED  
 PROFESSIONAL  
 LAND SURVEYOR

*Ken W Hoffine*  
 OREGON  
 JULY 16, 1987  
 KEN W. HOFFINE  
 PLS 2291

EXPIRES 6-30-13

C.S. File No 65/78-9