

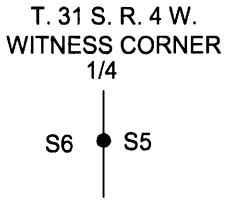
OREGON CORNER RESTORATION FORM

Section 6 Township 31 S. Range 4W
 County Douglas Date 2/14/13

FILED

Date: 3-13-2013 By: JC
 This survey consists of:
 Map: _____
 Narrative: _____
 Corner Rpt: CS 65/78-8

Corner Designation



- _____ Condition Report Only
- _____ Not Found
- X _____ Renewed
- _____ Unrecorded
- _____ Surveyed In
- _____ Referenced Out

DOUGLAS COUNTY
SURVEYOR

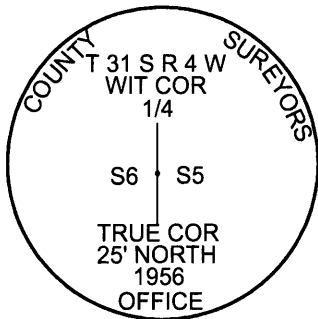
Previous Renewals/Surveys, etc.

Original GLO Field Notes Filed in Douglas County Surveyors Office Vol. 19 Pg. 7874, 1956 Douglas County Surveyor Perpetuated 1/4 Corner From Original Yew BT C. S. File 47/89, Hoffine Map M 123-69

Accessories Found: (Condition and Source)

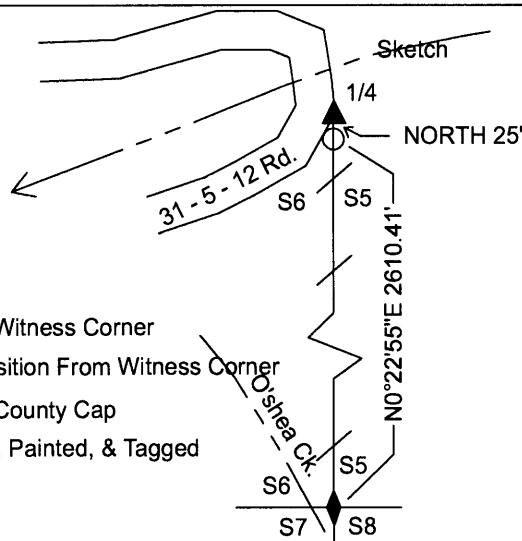
33" Douglas Fir Bears S35 3/4°W 6.5 Ft. (Record From M 123-69 S37°W 6.2 Ft.) Healed Face And Tag
 19" Douglas Fir Stump Bears S24°E 23.1 Ft. (Record From M 123-69 S24 1/2°E 22.9 Ft.) Partial Face

Monument Detail



Legend:

- Found 1956 Witness Corner
- ▲ Calculated Position From Witness Corner
- ◆ Found 1956 County Cap
- /— Lines Blazed, Painted, & Tagged



Monument Found

Found 1956 County Cap 1.0 Ft. Above Ground On The Upper Cut Of Existing Rocked Road Grade.

New Accessories

13" Douglas Fir Bears N26 1/2°E 47.6 Ft. We Scribe BT and Nail Aluminum Bearing TreeTag To The Tree
 The South End Of A Rail Car Bridge Bears N5°W 112 Ft.

Location & Comments

Lone Rock Timber ran a random traverse along the section lines from the east 1/4 corner to the southeast section corner to the south 1/4 corner to the southwest section corner of section 6. To mark property lines for timber management purposes. We also ran a GPS survey for survey control at points on our conventional traverse to check our closure. We marked the property lines with flagging, blazng, painting and aluminum boundary tags. Found witness corner above east cut bank of 31 - 5 - 12 rd, and approx. 112 ft. from the south end of a rail car bridge that crosses a tributary of O'shea creek.

Bearing Basis Bearing is From GPS Observation
 Firm/Agency Lone Rock Timber Co.
 Address P. O. Box 1127
Roseburg, Ore. 97470
 Party Chief Ken W. Hoffine
 Notes G. Angiolet
 Witness G. Angiolet

REGISTERED
PROFESSIONAL
LAND SURVEYOR

Ken W. Hoffine
 OREGON
 JULY 16, 1987
 KEN W. HOFFINE
 PLS 2291

EXPIRES 6-30-13

C.S. File No 65/78-8