

OREGON CORNER RESTORATION FORM

Section 32 Township 22 S. Range 6W  
 County Douglas Date 9/17/12

FILED  
 Date: 9-20-2012 By: JC  
 This survey consists of:  
 Map: \_\_\_\_\_  
 Narrative: \_\_\_\_\_  
 Corner Rpt: CS 65/77-43

Corner Designation

T. 22 S. R. 6 W.  
 S29  
 W 1/16  
 S32

- \_\_\_\_\_ Condition Report Only
- \_\_\_\_\_ Not Found
- X \_\_\_\_\_ Renewed
- \_\_\_\_\_ Unrecorded
- \_\_\_\_\_ Surveyed In
- \_\_\_\_\_ Referenced Out

DOUGLAS COUNTY  
 SURVEYOR

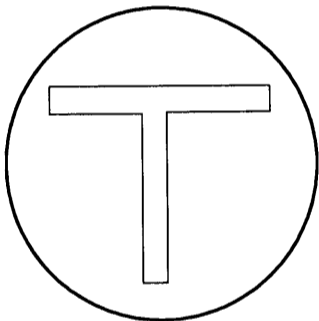
Previous Renewals/Surveys, etc.

Wilford 1958 Haines Map M 13-66 Filed in Douglas County Surveyors Office

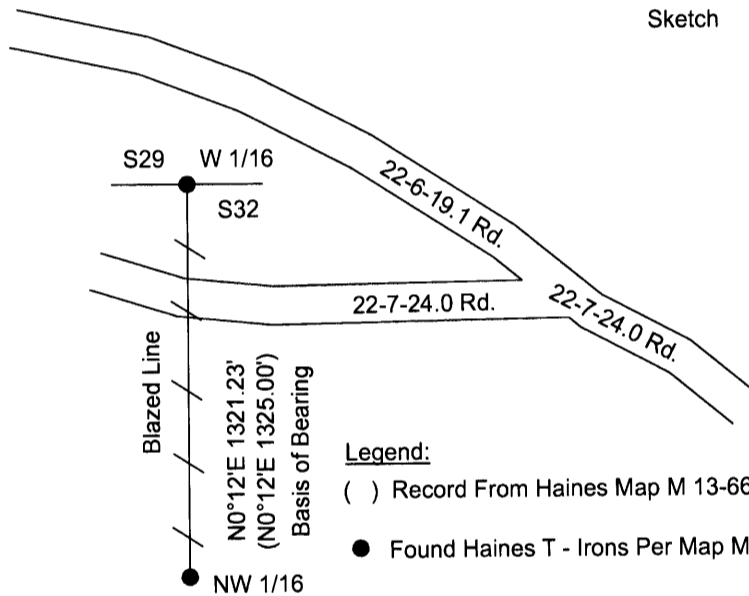
Monument(s) & Accessories Found: (Condition and Source)

Record 12" Doug Fir S89°W 5.3 Ft. is Now a Down Uproot  
 Record 14" Doug Fir N3°W 7.8 Ft. is Now Rotten Stump Remains

Monument Detail



Haines T - Iron With Brass Washer



Monument Found

Haines T - Iron With Brass Washer As Per Map M 13-66

New Accessories

21" Douglas Fir Bears S49°E 24.1 Ft. We Scribe W 1/16 S32 BT and Nail Aluminum Location Tag To The Tree  
 20" Douglas Fir Bears N45 1/4°W 25.8 Ft. We Scribe W 1/16 S29 BT and Nail Aluminum Location Tag To The Tree

Location & Comments

Corner lies 0.6 ft. above ground on southwest facing slope. Approx. 150 Ft. South of Ridge Top Road 22-7-24.0 Road. We Ran A Closed Loop Traverse From The W 1/6 To The NW 1/16 and Back To The W 1/16. Then Blazed, Painted, and Tagged Line as Shown on Sketch.

Bearing Basis Bearing is Assumed From  
Haines Map M 13-66  
 Firm/Agency Lone Rock Timber Co.  
 Address P. O. Box 1127  
Roseburg, Ore. 97470  
 Party Chief Ken W. Hoffine  
 Notes G. Angiolet  
 Witness I. Roman



EXPIRES 6-30-13

C.S. File No 65/77-43