

OREGON CORNER RESTORATION FORM

Section 32 Township 22 S. Range 6W
 County Douglas Date 9/17/12

FILED
 Date: 9-20-2012 By: JC
 This survey consists of:
 Map: _____
 Narrative: _____
 Corner Rpt. CS 65/77-42

DOUGLAS COUNTY

Corner Designation

T. 22 S. R. 6 W.
 NW 1/16
 ●
 S32

- _____ Condition Report Only
- _____ Not Found
- X _____ Renewed
- _____ Unrecorded
- _____ Surveyed In
- _____ Referenced Out

Previous Renewals/Surveys, etc.

Wilford Haines 1958 Map M 13-66 Filed in Douglas County Surveyors Office

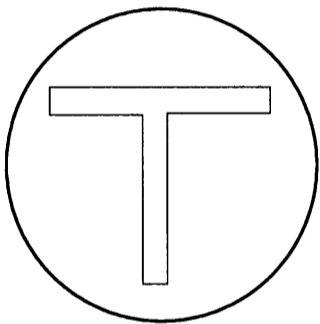
Monument(s) & Accessories Found: (Condition and Source)

41" Fir Bears East 3.5 Ft. As Per Record

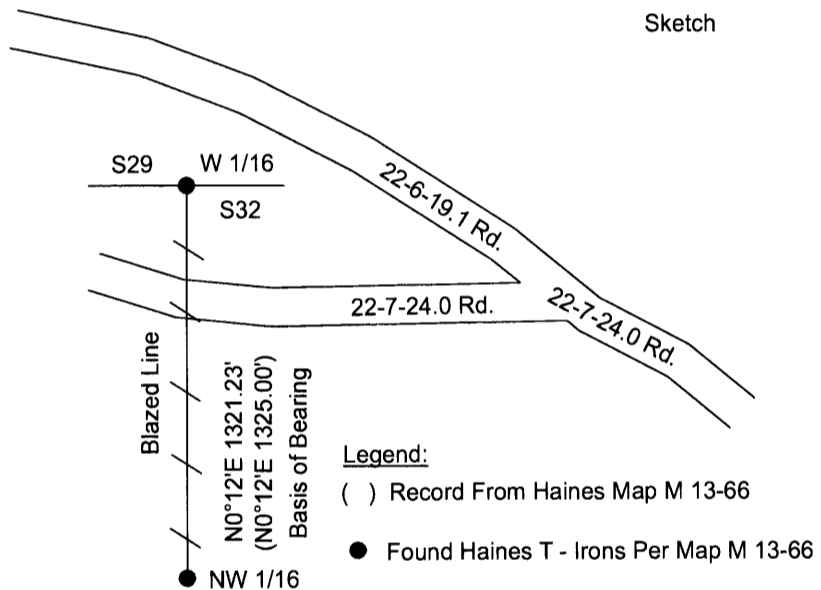
No Evidence of 7" Fir at S12° 30' W 20.6 Ft.

Monument Detail

Sketch



Haines T - Iron With Brass Washer



Legend:

- () Record From Haines Map M 13-66
- Found Haines T - Irons Per Map M 13-66

Monument Found

Haines T - Iron With Brass Washer As Per Map M 13-66

New Accessories

10" Douglas Fir Bears S2°E 24.9 Ft. We Scribe NW 1/16 S32 BT and Nail Aluminum Location Tag To The Tree

Location & Comments

Corner lies 1 ft. above ground on southeast facing slope. Approx. 100 Ft. South of Old Cat Road. We Ran A Closed Loop Traverse From The W 1/6 To The NW 1/16 and Back To The W 1/16. Then Blazed, Painted, and Tagged Line as Shown on Sketch.

Bearing Basis Bearing is Assumed From
Haines Map M 13-66
 Firm/Agency Lone Rock Timber Co.
 Address P. O. Box 1127
Roseburg, Ore. 97470
 Party Chief Ken W. Hoffine
 Notes G. Angiolet
 Witness I. Roman

REGISTERED
**PROFESSIONAL
 LAND SURVEYOR**

Ken Hoffine
 OREGON
 JULY 16, 1987
KEN W. HOFFINE
 PLS 2291

EXPIRES 6-30-13

C.S. File No 65/77-42