

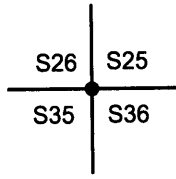
OREGON CORNER RESTORATION FORM

Section 26 Township 25 S. Range 4 W.
 County Douglas Date 1/19/12

FILED
 Date: 2/14/2012 By: JC
 This survey consists of:
 Map: _____
 Narrative: _____
 Corner Rpt: CS 65/76-12

Corner Designation

T. 25 S. R. 4 W.



- Condition Report Only
- Not Found
- Renewed
- Unrecorded
- Surveyed In
- Referenced Out

DOUGLAS COUNTY
 SURVEYOR

Previous Renewals/Surveys, etc.

1959 BLM Plat Filed In Douglas Surveyors Office

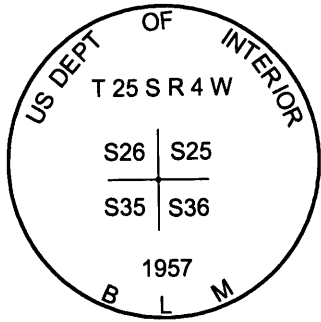
Douglas Surveyors Office Reestab. 1955 C.S. 47/44

Monument(s) & Accessories Found: (Condition and Source)

- 35" Cedar Bears S9 3/4°E 40.1 Ft. (Record S9 1/4°E 42.9 Ft.) Healed Face and B.T. Tag
- 32" Cedar Bears S57 3/4°W 19.3 Ft. (Record S59 1/4°W 20.13 Ft.) Healed Face and Tag
- 35" Cedar Bears N34 3/4°E 64.1 Ft. (Record N35 3/4°E 64.02 Ft.) Healed Face and Tag
- 29" Cedar Bears N10 1/2°W 77.8 Ft. (Record N10°W 79.2 Ft.) Healed Face and Tag

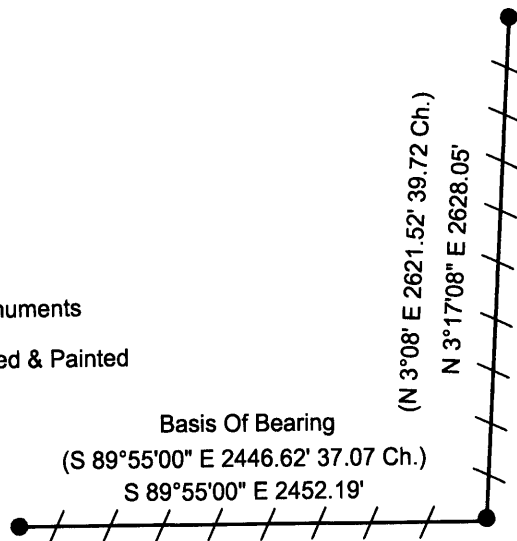
Monument Detail

Sketch



LEGEND

- Found Monuments
- / — Lines Blazed & Painted



Monument Found

BLM 1957 Brass Cap is 0.2 feet above ground level, with County Cap along side which is badly bent to the South

New Accessories

Location & Comments

Lone Rock ran a random traverse conventional survey from the S 1/4 easterly to the SESC, then northerly to the E1/4 corner of section 26, which we close with GPS. The purpose of survey is to blaze and paint true line between monuments for timber management purposes. We located the above monuments during the course of this survey.

Bearing Basis 1959 BLM Plat - Survey S1/4 To SESC Corner of Section 26.
 Firm/Agency Lone Rock Timber Co.
 Address P. O. Box 1127 Roseburg, Ore. 97470
 Party Chief Ken W. Hoffine
 Notes G. Angiolet
 Witness I. Roman

REGISTERED
 PROFESSIONAL
 LAND SURVEYOR

Ken W Hoffine
 OREGON
 JULY 16, 1987
 KEN W. HOFFINE
 PLS 2291

EXPIRES 6-30-13

C.S. File No 65/76-12