

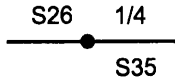
OREGON CORNER RESTORATION FORM

Section 26 Township 25 S. Range 4 W.  
 County Douglas Date 1/19/12

**FILED**  
 Date: 2-14-2012 By: JC  
 This survey consists of:  
 Map: \_\_\_\_\_  
 Narrative: \_\_\_\_\_  
 Corner Rpt: CS 65/76-11

Corner Designation

T. 25 S. R. 4 W.



- Condition Report Only
- Not Found
- Renewed
- Unrecorded
- Surveyed In
- Referenced Out

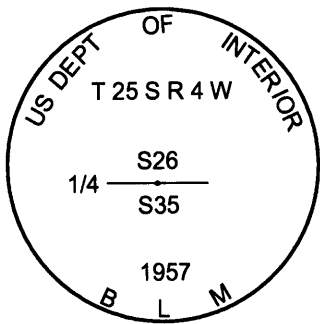
**DOUGLAS COUNTY  
 SURVEYOR**

Previous Renewals/Surveys, etc. 1959 BLM Plat Filed In Douglas Surveyors Office  
 Douglas Surveyors Office Reestab. 1981 C.S. 61/29

Monument(s) & Accessories Found: (Condition and Source)

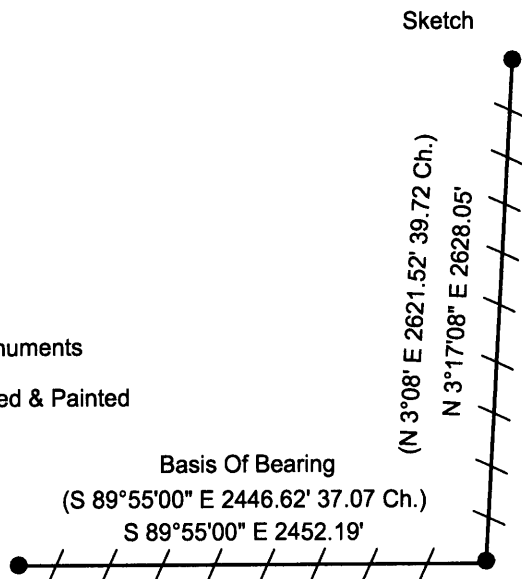
- 25" Douglas Fir Bears S88°W 61.7 Ft. (Record West 62.5 Ft.) Healed Face and B.T. Tag
- 14" Douglas Fir Bears N48 3/4°E 13.2 Ft. (Record N49 1/2°E 13.1 Ft.) Healed Face and Tag
- 35" Cedar Bears S49 1/2°E 98.8 Ft. (Record S48 1/2°E 98.5 Ft.) Healed Face and Tag

Monument Detail



**LEGEND**

- Found Monuments
- /— Lines Blazed & Painted



Monument Found

BLM 1957 Brass Cap is 0.2 feet above ground level, with angle iron fence post 2.0 ft. west of corner

New Accessories

Location & Comments

Lone Rock ran a random traverse conventional survey from the S 1/4 easterly to the SESC, then northerly to the E 1/4 corner of section 26, which we close with GPS. The purpose of survey is to blaze and paint true line between monuments for timber management purposes. We located the above monuments during the course of this survey.

Bearing Basis 1959 BLM Plat - Survey S1/4 To SESC Corner of Section 26.  
 Firm/Agency Lone Rock Timber Co.  
 Address P. O. Box 1127 Roseburg, Ore. 97470  
 Party Chief Ken W. Hoffine  
 Notes G. Angiolet  
 Witness I. Roman

REGISTERED  
**PROFESSIONAL  
 LAND SURVEYOR**  
*Ken W Hoffine*  
 OREGON  
 JULY 16, 1987  
**KEN W. HOFFINE**  
 PLS 2291

EXPIRES 6-30-13

**C.S. File No** 65/76-11