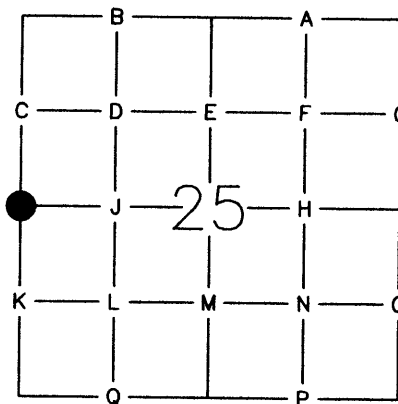


PUBLIC LAND CORNER

INDEX NO. _____

WEYERHAEUSER COMPANY
WILLAMETTE REGION

TOWNSHIP 23S RANGE 2W
SECTION 25 CORNER WEST
COUNTY LANE/DOUGLAS OREGON



ORIGINAL CORNER DATED: 1894 BY: HENRY CHANDLER - GLO
CORNER: 12"X8"X6" BASALT STONE
ACCESSORIES: 40" FIR, N63°E, 8 LINKS
40" FIR, S75°W, 20 LINKS

REESTABLISHMENT NOTES DATED: 1962 BY: GEORGIA PACIFIC TIMBER CO. - CSF 12714
EVIDENCE RECOVERED: FOUND STONE
40" FIR, N63°E, 13.2 FEET
40" FIR SNAG, S75°W, 5.3 FEET
CORNER SET: 1 1/2" IRON PIPE
ACCESSORIES ESTABLISHED: _____

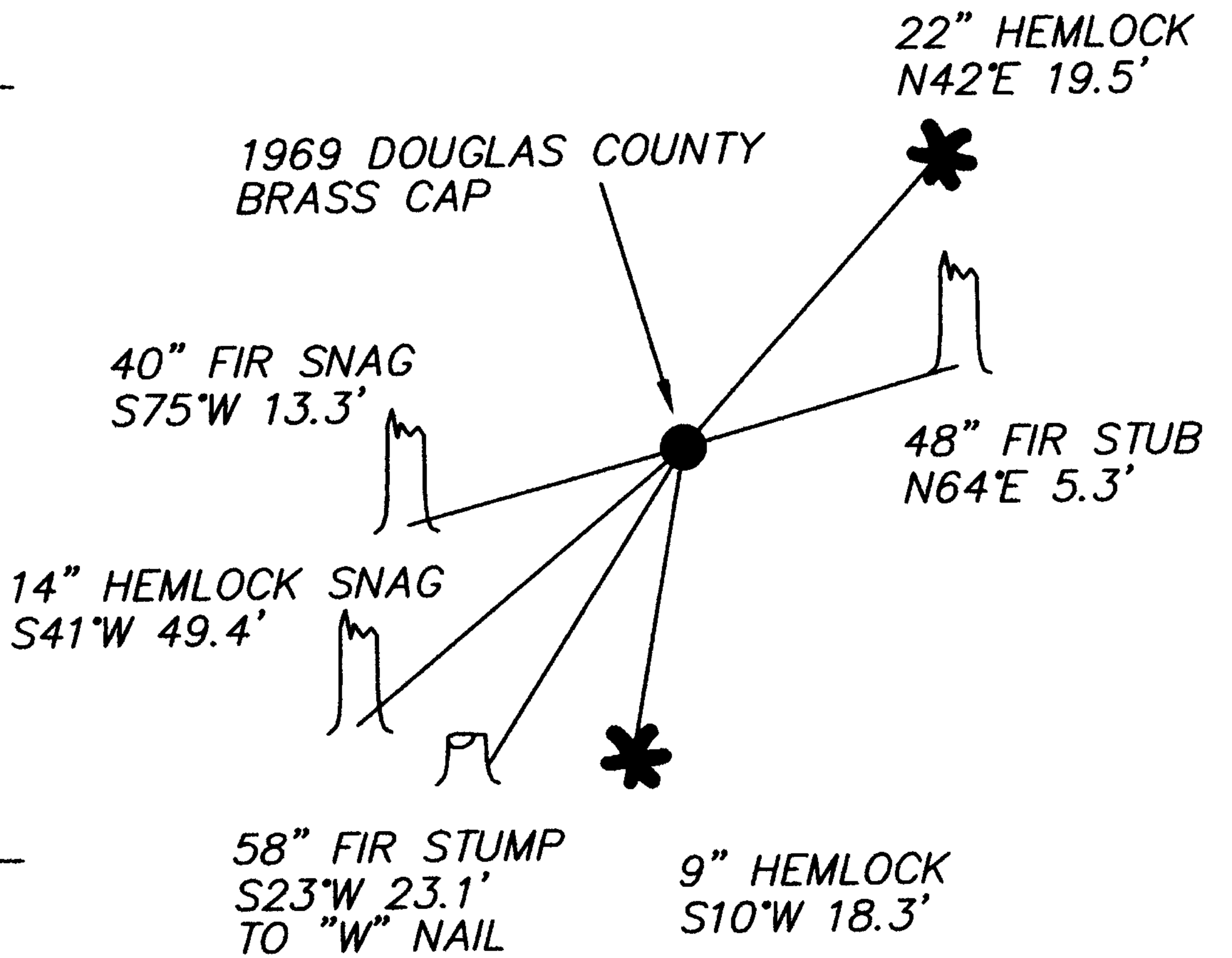
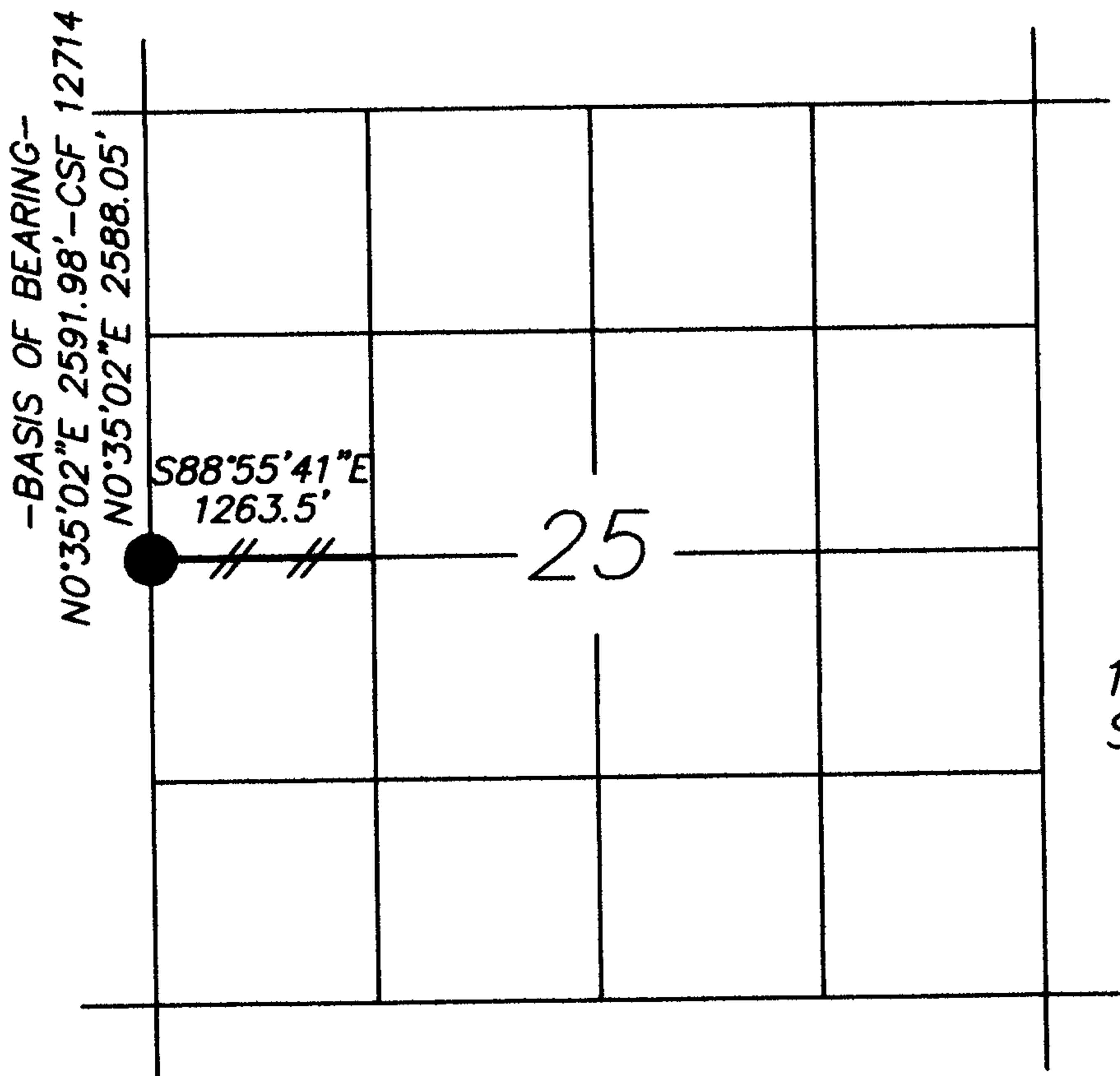
REESTABLISHMENT NOTES DATED: 1969 BY: DOUGLAS COUNTY SURVEYORS OFFICE
EVIDENCE RECOVERED: STONE NOT FOUND
48" FIR, N63°E, 5.3 FEET-SCAR
40" FIR SNAG, *S57°W 13.2 FEET-SCRIBE * S 75 W
CORNER SET: SET BRASS CAP
ACCESSORIES ESTABLISHED: 13" HEMLOCK, N42°E, 19.6 FEET
12" HEMLOCK, S40°W, 49.6 FEET

REESTABLISHMENT NOTES DATED: 1976 BY: WEYERHAEUSER CO. - GLEN MCCHESENEY
EVIDENCE RECOVERED: DOUGLAS COUNTY BRASS CAP
48" X 6' FIR STUB, N63°E, 5.3'-ORIGINAL
40"X20' FIR SNAG, S77°W, 12.6'-ORIGINAL
14" HEMLOCK, N42°E, 19.6'-DOUGLAS COUNTY BEARING TREE
12" HEMLOCK, S39°W, 49.3'-DOUGLAS COUNTY BEARING TREE
CORNER SET: NOTHING
ACCESSORIES ESTABLISHED: 58" FIR STUMP, S23°W, 23.1' TO "W" NAIL

REMONUMENTATION

DATE: 10-06-11 BY: DANIEL W. BAKER TITLE: PLS 1978 FIRM: BAKER & ASSOC.
EVIDENCE RECOVERED: 2 1/2" DOUGLAS COUNTY BRASS CAP "1969"
14" HEMLOCK, N42°E, 19.6'-DOUGLAS COUNTY BEARING TREE
48" ROTTEN FIR STUB, N64°E, 5.3'-ORIGINAL
58" FIR STUMP, S23°W, 23.1' TO "W" NAIL
13" HEMLOCK SNAG, S41°W, 49.4'-DOUGLAS COUNTY BEARING TREE
40" FIR SNAG, S75°W, 13.3'-ORIGINAL

CORNER SET: NOTHING
ACCESSORIES ESTABLISHED: 9" HEMLOCK, S10°W, 18.3' TO SPIKE IN SIDE-SCRIBED "1/4S26 BT"
OTHER INFORMATION: _____



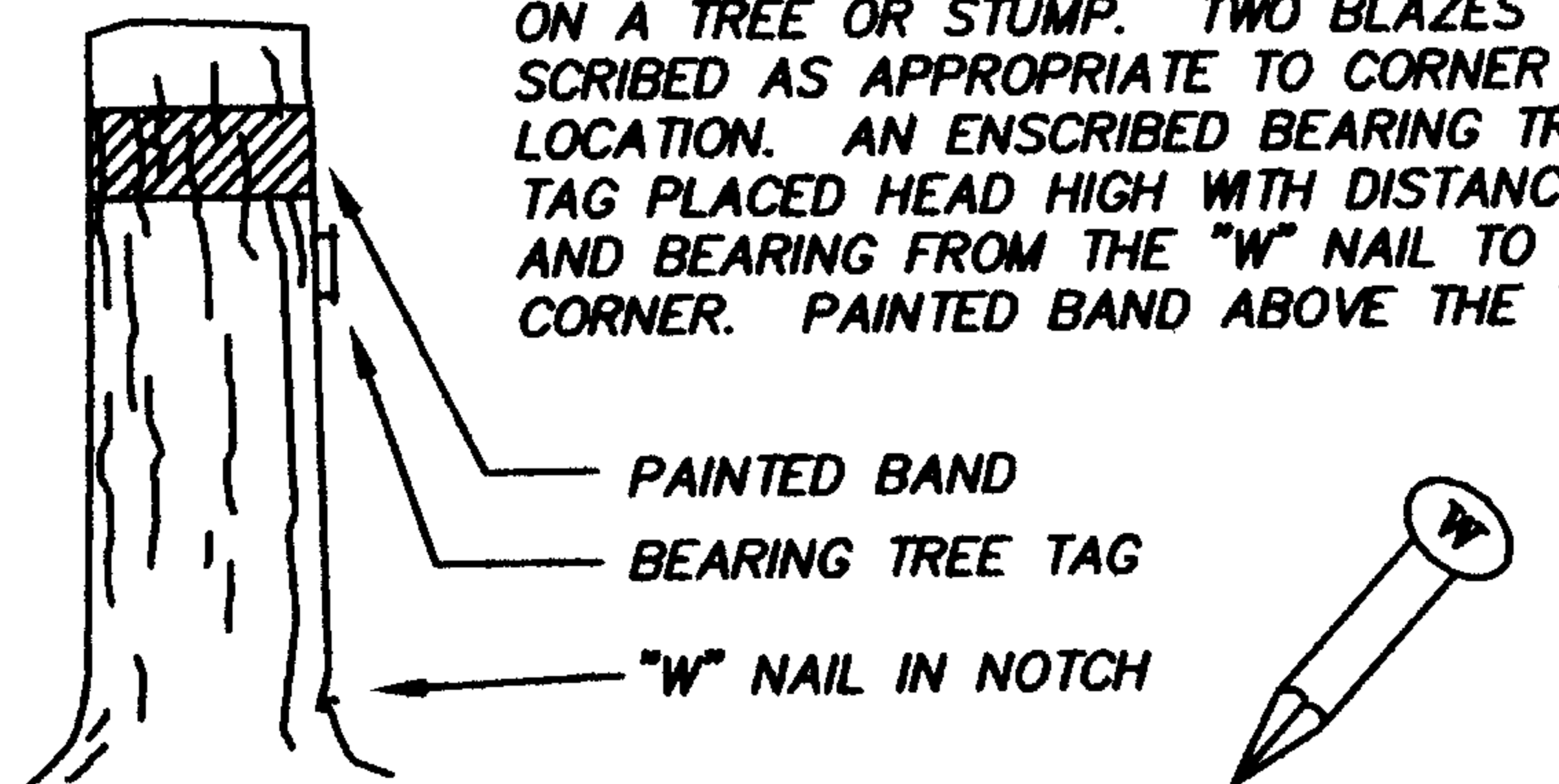
- LINE MARKED BY NOTCH CUT IN BLAZE
- KNOWN CORNER
- REFERENCED CORNER BY WEYERHAEUSER METHOD

SKETCH

THE WESTERLY 1263 FEET OF THE EAST-WEST CENTERLINE OF SECTION 25 WAS TRAVERSED IN SEPTEMBER, 2011 AND MARKED ON OCTOBER 6, 2011. THE TRUE PROPERTY LINE (E-W CENTERLINE) WAS BLAZED AND PAINTED (BLAZES PAINTED ORANGE) AND ORANGE RIBBON WAS PLACED ON THE TRUE PROPERTY LINE. 6 FOOT STEEL POSTS WERE SET AT RANDOM INTERVALS ALONG THE TRUE PROPERTY LINE. THE 1 1/2" IRON PIPE SET AS THE CENTER-WEST 1/16 CORNER IN COUNTY SURVEY FILE NO. 12714. WAS NOT HELD IN THIS SURVEY, AS IT WAS 3.7 FEET SOUTH OF THE TRUE EAST-WEST CENTERLINE OF SECTION 25.

WEYERHAEUSER COMPANY
CORNER REFERENCE METHOD

A "W" NAIL DRIVEN INTO A NOTCH LOW ON A TREE OR STUMP. TWO BLAZES SCRIBED AS APPROPRIATE TO CORNER LOCATION. AN ENSCRIBED BEARING TREE TAG PLACED HEAD HIGH WITH DISTANCE AND BEARING FROM THE "W" NAIL TO THE CORNER. PAINTED BAND ABOVE THE TAG.



IDENTIFIED ON PHOTO: _____

INFORMATION ON CORNER AS NOW SET

GROUND COVER: SALAL, RHODODENDREN, HUCKLEBERRY, OCEANSPRAY, BLACKBERRIES AND SMALL FIR

SLOPE FACE (BEARING) N 60° W (-) 70 %

FROM CORNER	NORTH	<u>-20%</u>
	SOUTH	<u>+30%</u>
	EAST	<u>+65%</u>
	WEST	<u>-65%</u>

BY: DANIEL W. BAKER DATE: 10-06-11
 FIRM: BAKER & ASSOCIATES
 ASSISTED BY: DAN HUNYADA AND SEAN BOWEN
 COPIES TO: LANE COUNTY AND DOUGLAS COUNTY

ORS 672-025

REGISTERED
PROFESSIONAL
LAND SURVEYOR

OREGON
JULY 16, 1982
DANIEL W. BAKER
1978

EXPIRES 12/31/13