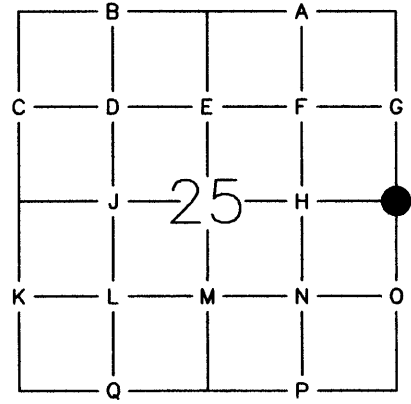


FILED JAN 5 2012

PUBLIC LAND CORNER

INDEX NO. \_\_\_\_\_

WEYERHAEUSER COMPANY  
WILLAMETTE REGION



TOWNSHIP 23S RANGE 2W  
 SECTION 25 CORNER EAST  
 COUNTY LANE/DOUGLAS OREGON

ORIGINAL CORNER DATED: 1894 BY: HENRY CHANDLER - GLO  
 CORNER: 12"X12"X6" BASALT STONE  
 ACCESSORIES: 7" HEMLOCK, S17-1/2'E, 28 LINKS  
7" FIR, S41-1/2'W, 16 LINKS

REESTABLISHMENT NOTES DATED: 1962 BY: GEORGIA PACIFIC TIMBER CO. - CSF 12714  
 EVIDENCE RECOVERED: FOUND 1 1/2" IRON PIPE  
12" HEMLOCK, S17'E, 18.5 FEET-ORIGINAL  
24" FIR, S70'W, 4.0 FEET-B-K TAG  
 CORNER SET: NOTHING SET  
 ACCESSORIES ESTABLISHED: \_\_\_\_\_

REESTABLISHMENT NOTES DATED: \_\_\_\_\_ BY: \_\_\_\_\_  
 EVIDENCE RECOVERED: \_\_\_\_\_

CORNER SET: \_\_\_\_\_  
 ACCESSORIES ESTABLISHED: \_\_\_\_\_

REESTABLISHMENT NOTES DATED: \_\_\_\_\_ BY: \_\_\_\_\_  
 EVIDENCE RECOVERED: \_\_\_\_\_

CORNER SET: \_\_\_\_\_  
 ACCESSORIES ESTABLISHED: \_\_\_\_\_

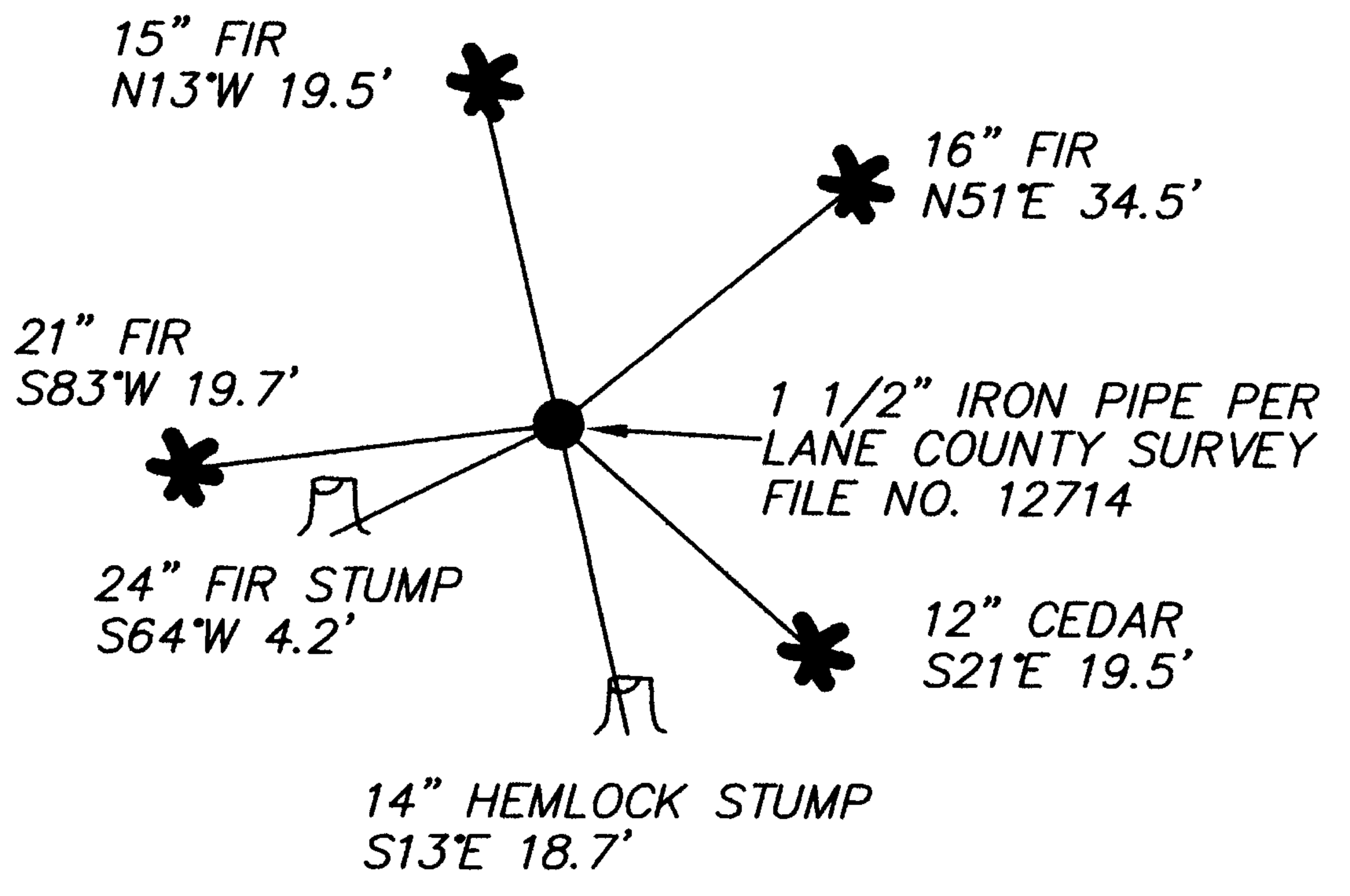
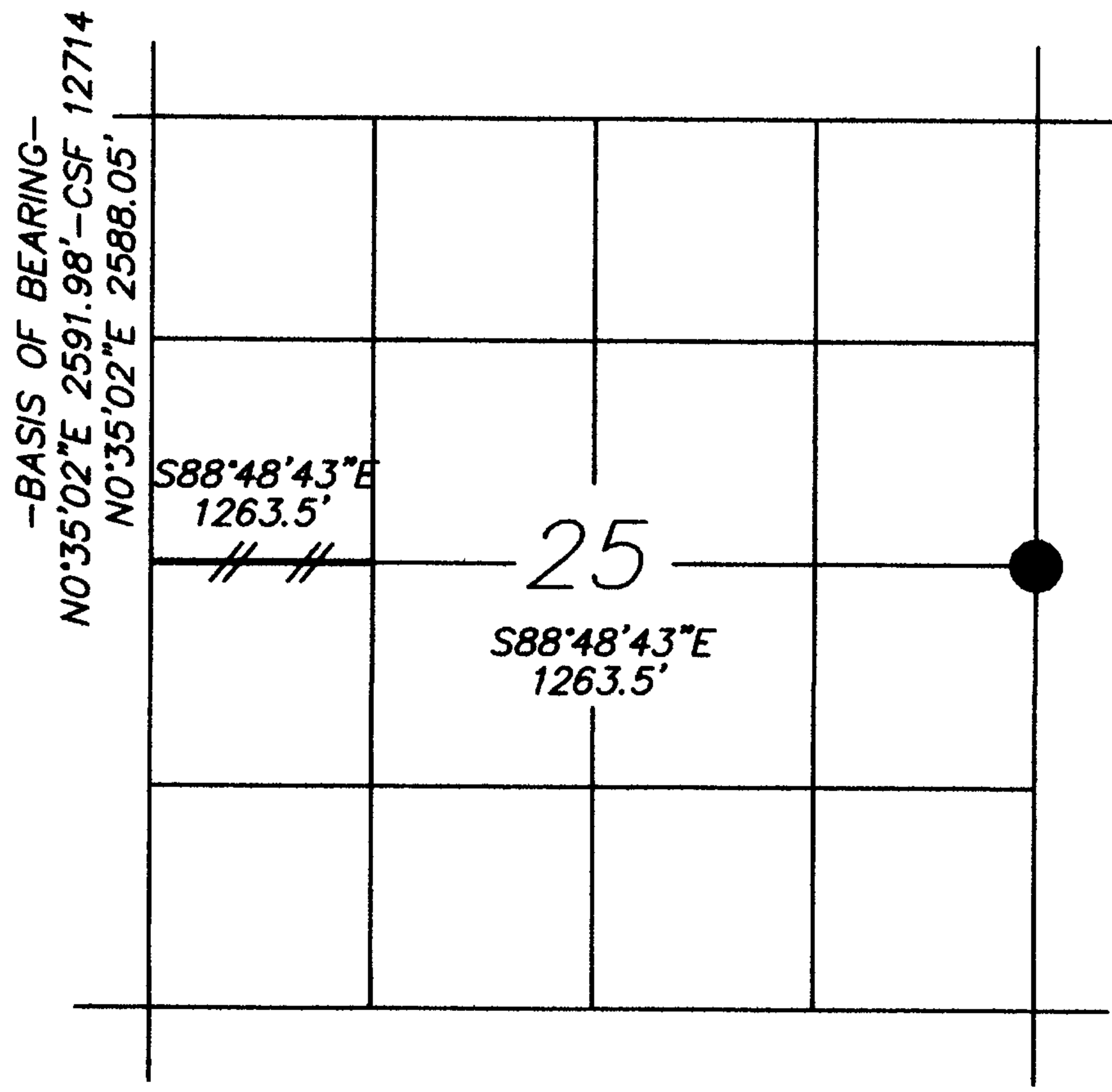
REMONUMENTATION

DATE: 9-30-11 BY: DANIEL W. BAKER TITLE: PLS 1978 FIRM: BAKER & ASSOC.  
 EVIDENCE RECOVERED: 1-1/2 IRON PIPE (BENT)  
17" HEMLOCK STUMP, S13'E, 18.7'-ORIGINAL BT  
24" FIR STUMP, S64'W, 4.2' (BOOTH KELLY BT)

CORNER SET: NOTHING  
 ACCESSORIES ESTABLISHED: 16" FIR, N51'E, 34.5' TO SPIKE IN SIDE-SCRIBED "1/4S30 BT"  
12" CEDAR, S21'E, 19.5' TO SPIKE IN SIDE-SCRIBED "1/4S30 BT"  
21" FIR, S83'W, 19.7' TO SPIKE IN SIDE-SCRIBED "1/4S25 BT"  
15" FIR, N13'W, 19.5' TO SPIKE IN SIDE-SCRIBED "1/4S25 BT"

OTHER INFORMATION: \_\_\_\_\_

C.S. File No 65/76-1

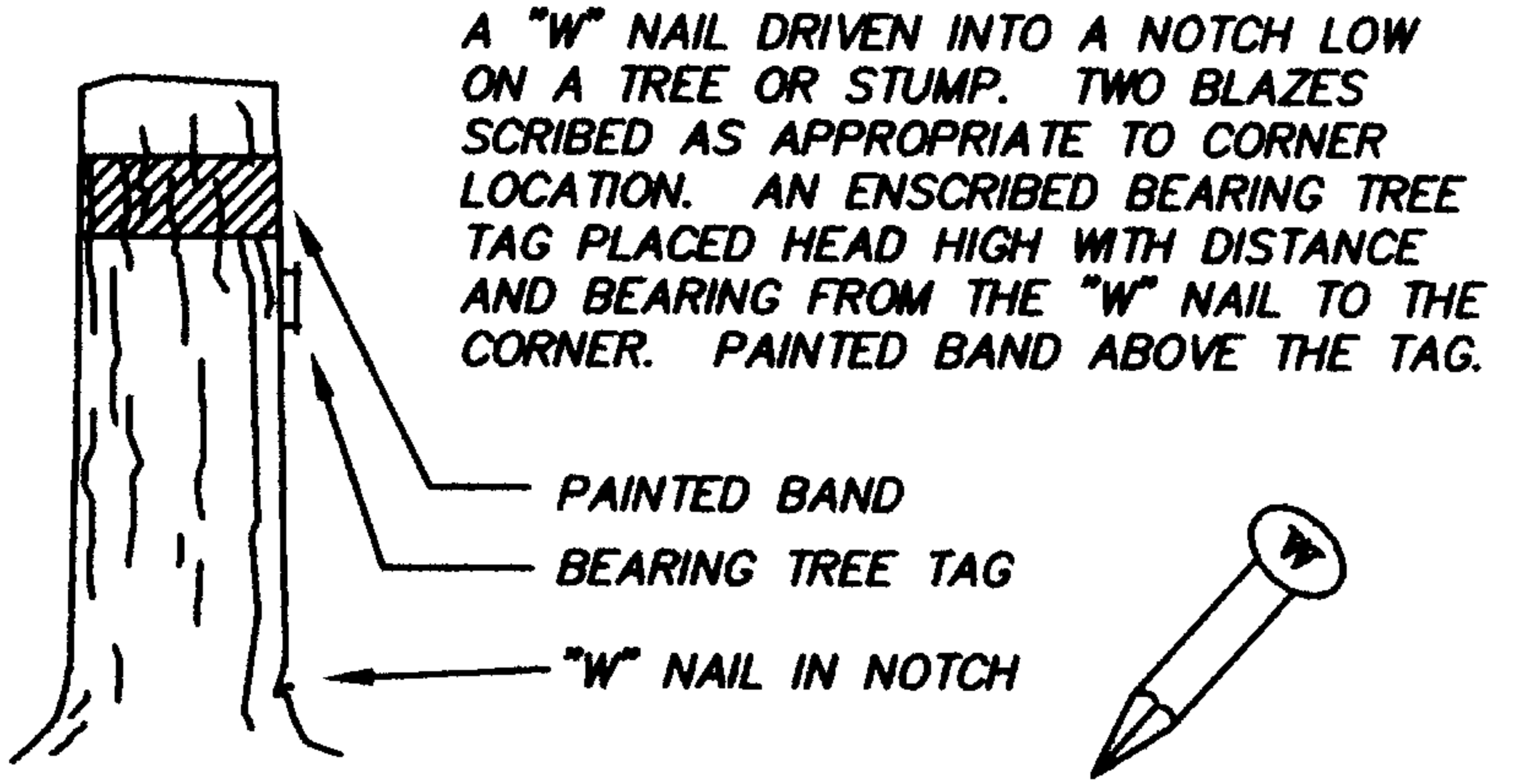


- LINE MARKED BY NOTCH CUT IN BLAZE
- KNOWN CORNER
- REFERENCED CORNER BY WEYERHAEUSER METHOD

SKETCH

THE WESTERLY 1263 FEET OF THE EAST-WEST CENTERLINE OF SECTION 25 WAS TRAVERSED IN SEPTEMBER, 2011 AND MARKED ON OCTOBER 6, 2011. THE TRUE PROPERTY LINE (E-W CENTERLINE) WAS BLAZED AND PAINTED (BLAZES PAINTED ORANGE) AND ORANGE RIBBON WAS PLACED ON THE TRUE PROPERTY LINE. 6 FOOT STEEL POSTS WERE SET AT RANDOM INTERVALS ALONG THE TRUE PROPERTY LINE. THE 1 1/2" IRON PIPE SET AS THE CENTER-WEST 1/16 CORNER IN COUNTY SURVEY FILE NO. 12714, WAS NOT HELD IN THIS SURVEY, AS IT WAS 3.7 FEET SOUTH OF THE TRUE EAST-WEST CENTERLINE OF SECTION 25.

WEYERHAEUSER COMPANY  
CORNER REFERENCE METHOD



IDENTIFIED ON PHOTO: \_\_\_\_\_  
 INFORMATION ON CORNER AS NOW SET  
 GROUND COVER: FERN, OREGON GRAPE, HAZELNUT  
 SLOPE FACE (BEARING) S 45° E (-) 40 %

FROM CORNER	NORTH	<u>+35%</u>
	SOUTH	<u>-10% FOR 50', THEN +2% FOR 100'</u>
	EAST	<u>-20%</u>
	WEST	<u>+35%</u>

BY: DANIEL W. BAKER DATE: 9-30-11  
 FIRM: BAKER & ASSOCIATES  
 ASSISTED BY: DAN HUNYADA AND SEAN BOWEN  
 COPIES TO: LANE COUNTY AND DOUGLAS COUNTY

ORS 672-025

REGISTERED PROFESSIONAL LAND SURVEYOR

*Daniel W. Baker*

OREGON  
JULY 16, 1982  
DANIEL W. BAKER  
1978

EXPIRES 12/31/13