

# MAP OF SURVEY

LOCATED in Sec. 20, T 28 S.,  
R. 8 W., W.M., Douglas Co., Ore.

FILED

Date: 2-8-2012 By: JC  
This survey consists of:  
Map: CS 65/75-3  
Narrative: \_\_\_\_\_  
Corner Rpt: \_\_\_\_\_

February 1, 2012

DOUGLAS COUNTY  
SURVEYOR

SURVEYED FOR: *SENECA JONES TIMBER CO.*  
*P.O. BOX 2129*  
*ROSEBURG, OREGON 97470*

REGISTERED  
PROFESSIONAL  
LAND SURVEYOR

*David A. Edwards*

OREGON  
JULY 26, 1988  
DAVID A. EDWARDS  
2339

RENEWS 12/31/13

SURVEYED BY: *DAVID EDWARDS LAND SURVEYING*  
*P.O. BOX 361*  
*OAKLAND, OREGON 97462*  
*PHONE: (541) 459-0512*

## LEGEND

- ⊙ INDICATES DOUGLAS COUNTY SURVEYOR OR B.L.M. BRASS CAP FOUND.
- INDICATES 5/8" X 30" STEEL REBAR WITH 2 1/2" DIAM. ALUM. CAP MKD. AS PER 2009 B.L.M. MANUAL AND "LS 2339" AND "2012" SET FOR 1/4 COR. AT MIDPOINT.

( ) DENOTES 1972 B.L.M. RECORD DATA.

SCALE: 1" = 1000'

BASIS OF BEARINGS: 1972 B.L.M. RESURVEY.

## NARRATIVE

THE PURPOSE OF THIS SURVEY IS TO MARK THE NORTH LINE OF SECTION 20. AFTER RUNNING A RANDOM TRAVERSE BETWEEN THE NE AND NW SECTION CORNERS AND THE 1972 B.L.M. PROPORTIONED NORTH 1/4 CORNER OF SECTION 20 I FIND THAT SAID 1/4 CORNER IS 21 FEET NORTH OF THE TRUE LINE. THAT BEING OUTSIDE ACCEPTABLE TOLERANCES FOR 1972 I REJECT THE B.L.M. 1/4 CORNER AND ESTABLISH A NEW MONUMENT AT THE MIDPOINT. THE ERRONEOUS B.L.M. MONUMENT BEARS N.3°41'15"E., 20.86 FEET. TWO 1972 BEARING TREES WERE FOUND WITH HEALED BLAZES AND ARE SITUATED AS FOLLOWS FROM MY NEW MONUMENT:

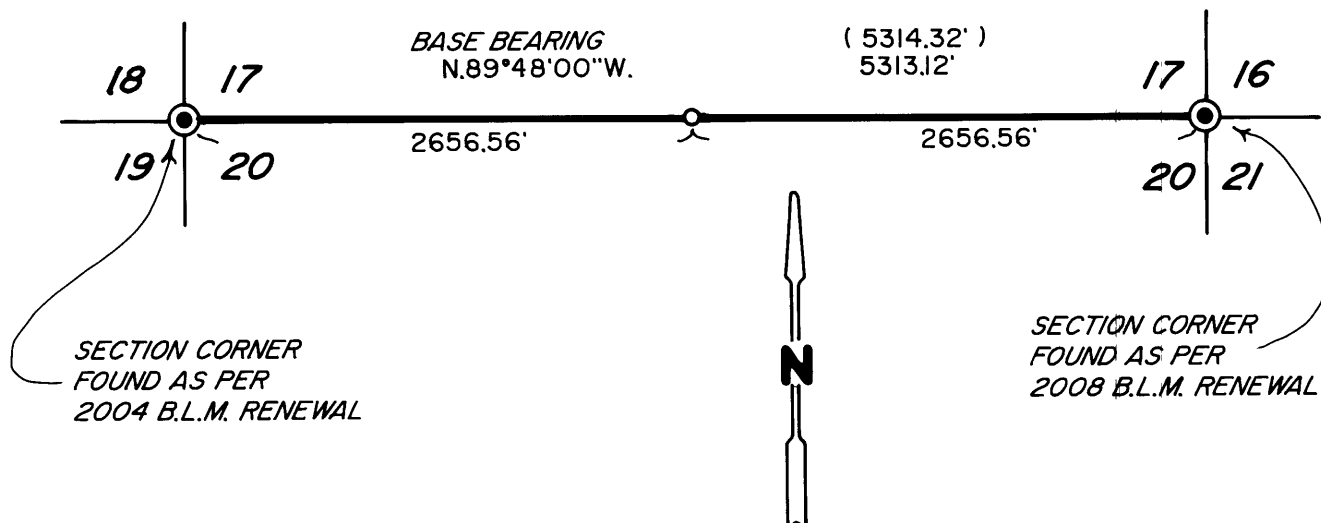
16" DIA. HEMLOCK N.1°20'E., 58.4 FEET.  
17" DIAM. HEMLOCK S.17°58'W., 12.4 FEET.

FIELD CREW: DAVID EDWARDS AND BRANT MILLER.

EQUIPMENT: NIKON TOTAL STATION.

COMPUTATIONS AND DRAFTING: DAVID EDWARDS.

NOTE: THE SUBJECT LINE WAS MARKED BY BLAZING TREES ON EACH SIDE OF LINE, BY SETTING 6 FOOT STEEL POSTS ALONG THE LINE AT INTERVALS OF 200' OR LESS AND BY HANGING RED FLAGGING ALONG THE TRUE LINE.



C.S. File No 65/75-3