

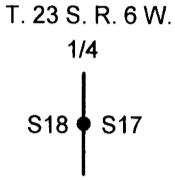
OREGON CORNER RESTORATION FORM

Section 18 Township 23 S. Range 6 W.  
 County Douglas Date 8/25/11

FILED

Date: 10-31-2011 By: JC  
 This survey consists of:  
 Map: \_\_\_\_\_  
 Narrative: \_\_\_\_\_  
 Corner Rpt: CS 65/72-38

Corner Designation



- \_\_\_\_\_ Condition Report Only
- \_\_\_\_\_ Not Found
- \_\_\_\_\_ Renewed
- \_\_\_\_\_ Unrecorded
- X \_\_\_\_\_ Surveyed In
- \_\_\_\_\_ Referenced Out

DOUGLAS COUNTY  
SURVEYOR

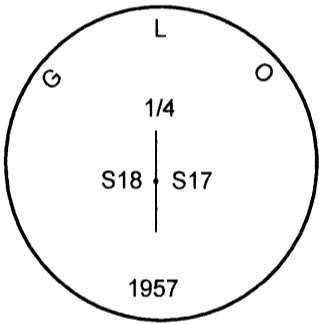
Previous Renewals/Surveys, etc.

1960 BLM Plat Filed In Douglas County Surveyors Office, Haines RM 1 - 17, CS File 63/149-13, & CS File 65/66-17

Monument(s) & Accessories Found: (Condition and Source)

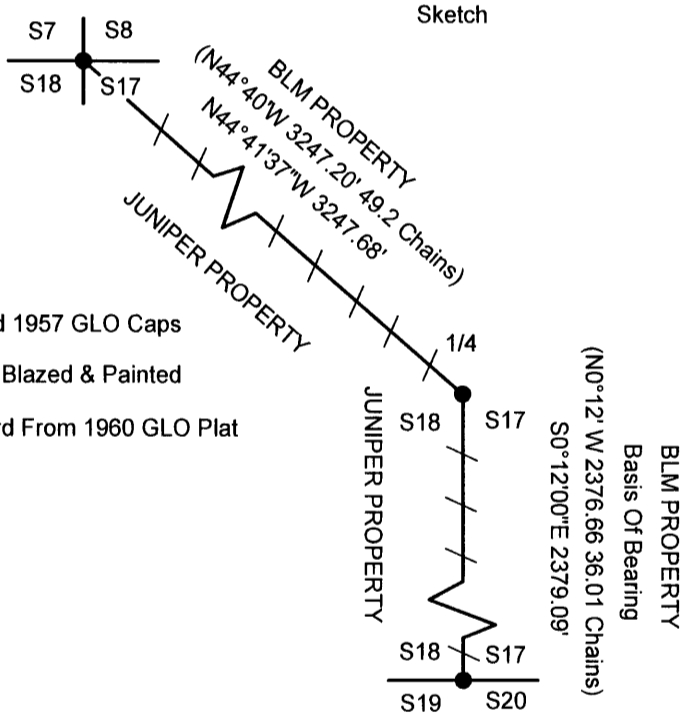
28" Douglas Fir Bears N73°W 63.25 Ft. (Record N72°W 62.7 Ft.) Healed Face and B.T. Tag

Monument Detail



LEGEND

- Found 1957 GLO Caps
- / — Lines Blazed & Painted
- ( ) Record From 1960 GLO Plat



Monument Found

1957 GLO Brass Cap

New Accessories

10" Douglas Fir Bears S65 3/4°E 18.8 Ft. We Scribe 1/4 S 17 BT And Tag Tree

Location & Comments

Lone Rock ran a random closed loop conventional survey from the South 1/4 section 18, to blaze and paint true line for timber management purposes. We located the above monument during the course of this survey.

Bearing Basis 1960 GLO Plat - Survey SESC  
To E 1/4 Corner Section 18  
 Firm/Agency Lone Rock Timber Co.  
 Address P. O. Box 1127  
Roseburg, Ore. 97470  
 Party Chief Ken W. Hoffine  
 Notes G. Angiolet  
 Witness Ignacio Roman & Dan Sailey

REGISTERED  
PROFESSIONAL  
LAND SURVEYOR

*Ken W Hoffine*

OREGON  
JULY 16, 1987  
KEN W. HOFFINE  
PLS 2291

EXPIRES 6-30-13

C.S. File No 65/72-38