

OREGON CORNER RESTORATION FORM

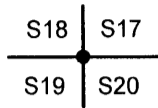
Section 18 Township 23 S. Range 6 W.
 County Douglas Date 8/25/11

FILED

Date: 10-31-2011 By: K
 This survey consists of:
 Map: _____
 Narrative: _____
 Corner Rpt: CS 65/72-37

Corner Designation

T. 23 S. R. ~~18~~⁶ W.



- _____ Condition Report Only
- _____ Not Found
- _____ Renewed
- _____ X _____ Unrecorded
- _____ Surveyed In
- _____ Referenced Out

DOUGLAS COUNTY
SURVEYOR

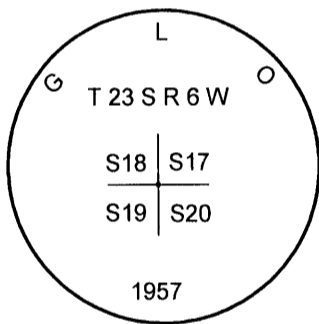
Previous Renewals/Surveys, etc.

1960 BLM Plat Filed In Douglas County Surveyors Office, Haines RM 1 - 17, CS File 63/149-13, & CS File 65/66-17

Monument(s) & Accessories Found: (Condition and Source)

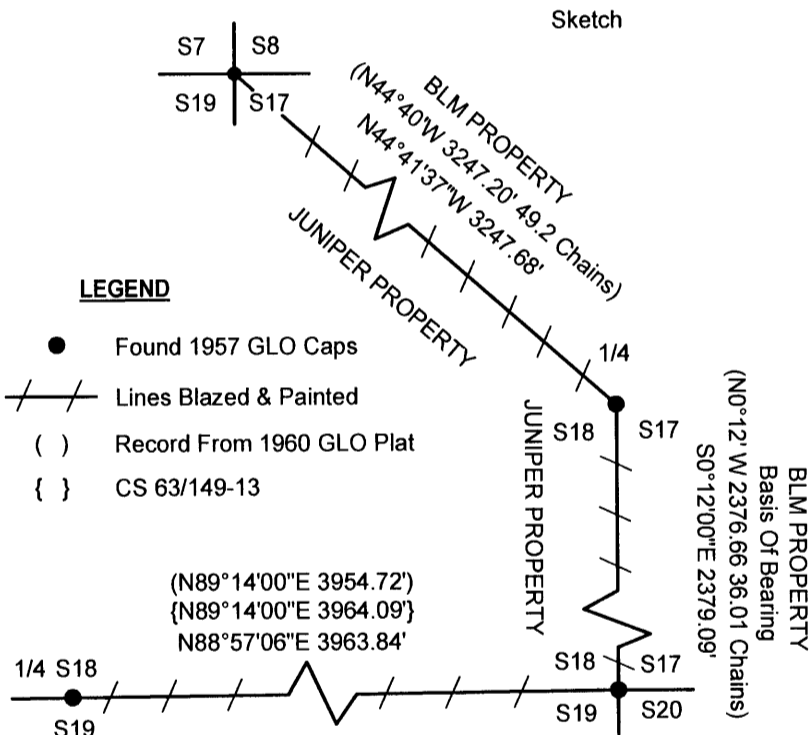
- 45" Douglas Fir Stump Bears S24°E 134.4 Ft. (Record S23 3/4°E 135.1 Ft.) Healed Face and B.T. Tag
- 30" Douglas Fir Bears N48°E 30.1 Ft. (Record N48 3/4°E 30.3 Ft.) Healed Face and B.T. Tag
- 30" Douglas Fir Bears S41 1/4°W 12.8 Ft. (Record S41 1/2°W 13.3 Ft.) Healed Face and B.T. Tag
- 24" Douglas Fir Snag Bears N0 3/4°W 14.0 Ft. (Record N0 1/2°E 13.7 Ft.) Healed Face and B.T. Tag

Monument Detail



LEGEND

- Found 1957 GLO Caps
- / — Lines Blazed & Painted
- () Record From 1960 GLO Plat
- { } CS 63/149-13



Monument Found

1957 GLO Brass Cap With Haines T-Iron Along Side.

New Accessories

None

Location & Comments

Lone Rock ran a random closed loop conventional survey from the South 1/4 to the Northeast section corners of section 18, to blaze and paint true line for timber management purposes. We located the above monument during the course of this survey.

Bearing Basis 1960 GLO Plat - Survey SESC
To E 1/4 Corner Section 18
 Firm/Agency Lone Rock Timber Co.
 Address P. O. Box 1127
Roseburg, Ore. 97470
 Party Chief Ken W. Hoffine
 Notes G. Angiolet
 Witness Ignacio Roman & Dan Sailey

REGISTERED
PROFESSIONAL
LAND SURVEYOR

Ken W Hoffine

OREGON
JULY 16, 1987
KEN W. HOFFINE
PLS 2291

EXPIRES 6-30-13

C.S. File No 65/72-37