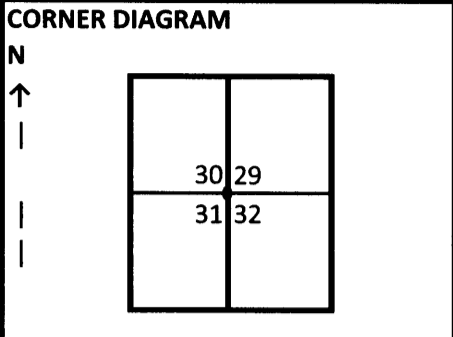


Index

CORNER RECORD (SEARCH)

File No. V-5 PROJ. NO. Williams CORNER SEC
 TOWNS. 25S RANGE 1W R.D. N. Umqua COUNTY Douglas GCDB# 200200
 MERID. WM FOREST Umqua STATE OR



DESCRIBE CORNER MONUMENT FOUND
 None Found, recent fire activity and where corner should fall is newly created vehical turn out created by CAT. No trace of existing monument found in fill.

DESCRIBE BEARING TREES OR OTHER OFFICIAL ACCESSOIRES FOUND

| DIA | TYPE | BEARS | DIST | FACE/MARKINGS |
|-----|----------|-------------|-----------|---------------------|
| 19" | Fir Snag | S 47° 57' W | 66.24 FT. | Healed Double Blaze |
| 21" | Fir Snag | S 14° 41' E | 50.89 FT. | Healed Double Blaze |
| 20" | Fir | N 16° 40' W | 12.95 FT. | Healed Double Blaze |
| 15" | Fir | N 67° 23' E | 24.19 FT. | Healed Double Blaze |

REGISTERED PROFESSIONAL LAND SURVEYOR
John Ransom
 OREGON JULY 21, 1992
 JOHN C. RANSOM
 2561

PHOTO IDENTIFICATION DATA
 Photo No. None
 Filed At. None
 Obj. Ident. None
 Ident. By None
 Signature _____

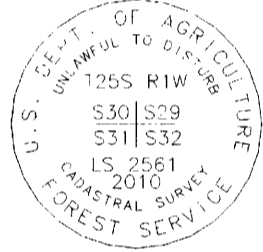
DESCRIBE CORNER LOCATION RELATIVE TO NEAR-BY FEATURES, ALSO HOW TO REACH CORNER
 To get to this corner from CR 78 take BLM 16 Road East twards Mace Mt Continue on Forest Road 500 past Mace Mt lookout turnoff corner on left Corner falls in middle of new vehical turn out, ring of red painted stones

PLANE COORDINATE POSTION DATA
 State OR Zone UTM-10M
 North 4801245
 East 512975
 Estab. By GCDB

Signature _____ Title LIST Division LANDS Hedquarters SPRINGFIELD Date 7100-52 (3/68)
 1/17/2011

CORNER RECORD (PERPETUATION)

MONUMENT : DESCRIBE NEW MONUMENT SET, OR WORK DONE TO PRESERVE EXISTING MONUMENT
 Set 3" Brass Cap on 2-1/2" Galvanized Iron Pipe from existing evidence. Marked as shown
 "U.S. Dept. of Agriculture - Forest Service"
 "T25S R1W S30 S29 S31 S32 LS2561 2010"
 "Cadastral Survey - Unlawful to Disturb"
 Set projecting 3 inches above mound of stone painted mound red



ACCESSORIES : DESCRIBE NEW BT's WITNESS OBJECTS ETC. ESTABLISHED, OR WORK DONE TO PRESERVE EXISTING EVIDENCE
 Painted BT's red with 6" wide band at head height, painted face blaze, new nails on tags. Added 2 New Trees:
 21" Fir Bears S 58° 54' W 79.17 FT. Scribed "T25SR1WS31""BT" on Double Blaze
 21" Fir Bears S 49° 58' E 13.39 FT. Scribed "T25SR1WS32""BT" on Double Blaze
 All new trees include a 3/4" brass washer nailed between B and T on lower blaze, Washer stamped "LS2561"

DONE BY: Jonathan Drew TITLE LSIT DATE 1/17/2011 PLS NO./AGENCY/STATE LSIT-Maine
 Certified Cor. Record Prepared ? _____ Filed At: _____ DATE _____

REMARKS

Index File No V-5 T. 25S R. 1W M. WM Proj No. Williams Cor. SEC

John Ransom
 Boundary Lead
 Siuslaw, Willamette, Umpqua, and Rogue River-Siskiyou National Forests
 3106 Pierce Parkway
 Springfield, OR 97477
 Ph 541-225-6446
 Email: jransom@fs.fed.us

FILED
 Date: 4-6-2011 By: JC
 This survey consists of:
 Map: _____
 Narrative: _____
 Corner 1/2: CS 65/72-12

DOUGLAS COUNTY SURVEYOR

C.S. File No 65/72-12