

RE-SET CLOSING SECTION CORNER
 FOR: ROSEBURG RESOURCES
 SEC. 7 & 18, T20S, R11W
 DOUGLAS COUNTY, OR

FILED

Date: 6-2-2010 By: JC

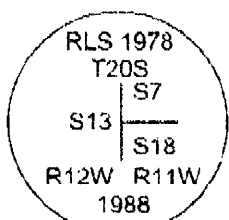
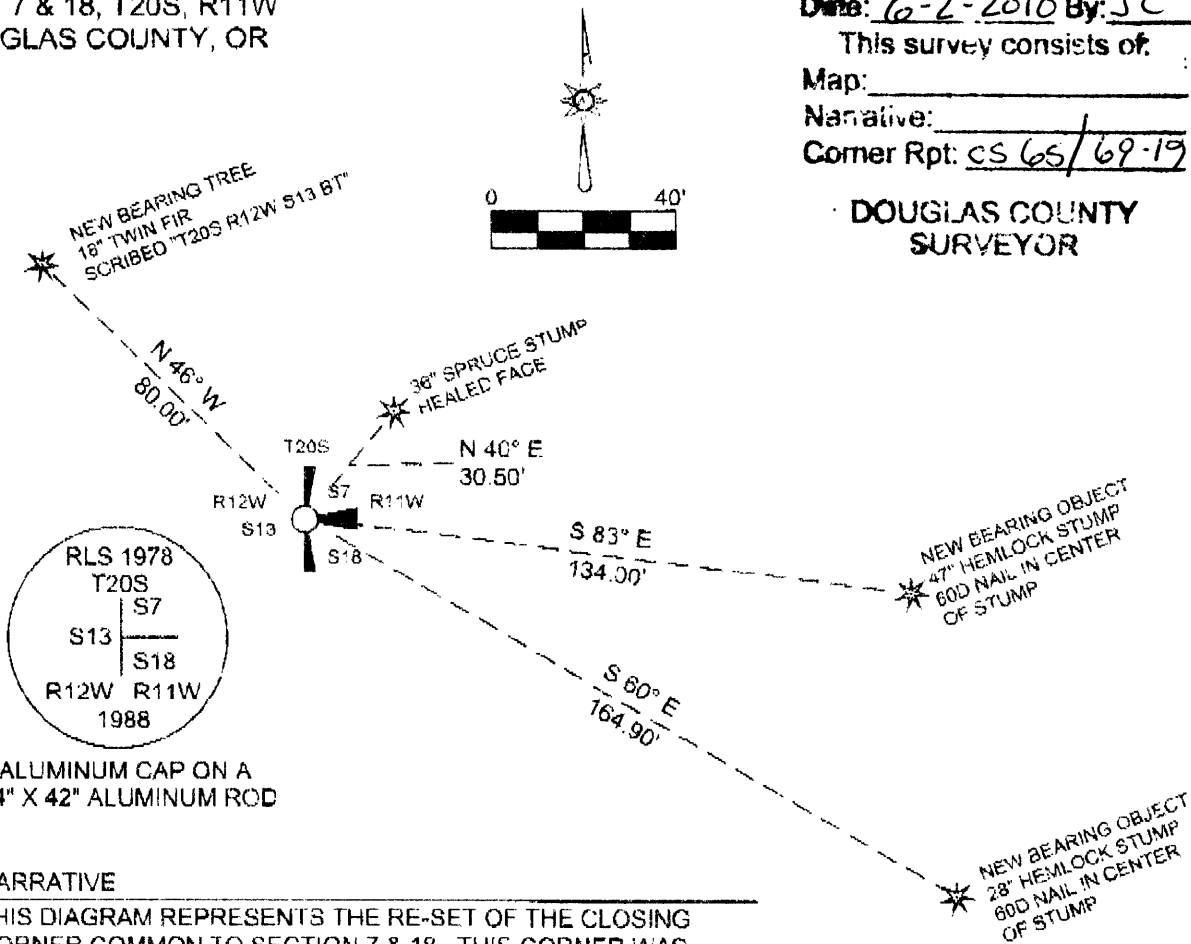
This survey consists of:

Map: _____

Narrative: _____

Corner Rpt: CS 65/69-19

DOUGLAS COUNTY
 SURVEYOR



ALUMINUM CAP ON A
 3/4" X 42" ALUMINUM ROD

NARRATIVE

THIS DIAGRAM REPRESENTS THE RE-SET OF THE CLOSING CORNER COMMON TO SECTION 7 & 18. THIS CORNER WAS REFERENCED AND THEN REMOVED TO ALLOW FOR THE CONSTRUCTION OF A LOGGING SPUR. ON MAY 25, 2010, I RE-SET THE REMOVED CORNER BACK TO ITS ORIGINAL POSITION BASED ON REFERENCE POINTS. THE CORNER NOW FALLS JUST EAST OF THE EASTERLY SHOULDER OF A NEWLY CONSTRUCTED LOGGING ROAD SPUR.

THE MONUMENT WAS ORIGINALLY SET BY DAN BAKER IN 1988, REFER TO M106-67, FILED WITH THE DOUGLAS COUNTY SURVEYOR OFFICE.

THE MONUMENT WAS RE-SET USING A TOPCON TOTAL STATION.

REGISTERED
 PROFESSIONAL
 LAND SURVEYOR

Robert E. Ward Jr.

OREGON
 ROBERT E. WARD JR.
 JULY 30, 1976
 IS 1091

RENEWAL DATE: 6/30/2012

FILE NAME		
10-25.TRV		
SCALE	DATE	DRAWN BY
40 Ft/in	5-25-2010	RBW
JOB	REVISION	SHEET
10-25	---	1/1

This map drawn with TRAVERSE PC Software

Ward NorthWest, Inc.

P.O. BOX 105 FLORENCE, OR 97439
 (541) 397-9201 FAX: 541-397-3548